



6.5 InterScan™ Web Security Virtual Appliance

Installation Guide

Antivirus and Content Security at the Web Gateway



Web Security

Trend Micro Incorporated reserves the right to make changes to this document and to the products described herein without notice. Before installing and using the software, review the readme files, release notes, and the latest version of the applicable user documentation, which are available from the Trend Micro Web site at:

<http://www.trendmicro.com/download>

Trend Micro, the Trend Micro t-ball logo, InterScan, TrendLabs, Trend Micro Control Manager, and Trend Micro Damage Cleanup Services are trademarks or registered trademarks of Trend Micro, Incorporated. All other product or company names may be trademarks or registered trademarks of their owners.

Copyright© 2014 Trend Micro Incorporated. All rights reserved.

Document Part No. IBEM65882/130313

Release Date: July 2014

Protected by U.S. Patent No. 5,951,698

The Installation Guide for Trend Micro™ InterScan™ Web Security Virtual Appliance is intended to introduce the main features of the software and installation instructions for your production environment. You should read through it prior to installing or using the software.

Detailed information about how to use specific features within the software are available in the online help file and the online Knowledge Base at Trend Micro's Web site.

Trend Micro is always seeking to improve its documentation. Your feedback is always welcome. Evaluate this documentation on the following site:

<http://www.trendmicro.com/download/documentation/rating.asp>

Contents

Preface

Audience	x
How to Use this Guide	x
IWSVA Documentation	xii
Document Conventions	xiii
About Trend Micro	xiii

Chapter 1: Preinstallation Planning

Server Requirements	1-2
Operating System	1-2
Hardware Requirements	1-2
Component Installation	1-3
Web Browser	1-4
Other Requirements	1-4
Information Needed to Install IWSVA	1-6
Fresh Installation	1-6
Migration	1-6
Type of Proxy Configuration	1-7
Control Manager Server Information	1-7
Database Type and Location	1-7
SNMP Notifications	1-7
Web Console Password	1-7
Command Line Access	1-8
Proxy for Internet Updates	1-8
Activation Codes	1-8
Planning Network Traffic Protection	1-9
Transparent Bridge Mode	1-9

Forward Proxy Mode	1-10
Reverse Proxy Mode	1-10
ICAP Mode	1-10
Simple Transparency Mode	1-10
WCCP Mode	1-11

Chapter 2: Deployment Primer

Identifying Your Server Placement	2-2
Two Firewalls with DMZ	2-2
One Firewall with No DMZ	2-3
Planning Network Traffic Flows	2-4
Planning the HTTP Flow	2-5
HTTPS Decryption	2-7
Planning FTP Flows	2-7
FTP Proxy in Standalone Mode	2-7
FTP Proxy in Dependent Mode	2-9
Deploying in Forward Proxy Mode	2-10
Overview of Forward Proxy Mode	2-10
Reconfiguring Client Settings	2-11
Using a Layer 4 Switch	2-12
Using a WCCP-enabled Switch or Router	2-14
Planning the HTTP Flow Using the Forward Proxy Mode	2-15
HTTP Proxy in the Standalone Mode	2-15
HTTP Proxy in Simple Transparency Mode	2-16
HTTP Proxy in Dependent Mode (Proxy Ahead)	2-17
HTTP Proxy in Dependent Mode (Proxy Behind)	2-19
HTTP Double Proxy in Dependent Mode	2-21
Deploying in WCCP Mode	2-23
HTTP Proxy in WCCP Mode (Single and Multiple IWSVA Servers)	2-23
2-23	
Deploying in ICAP Mode	2-23
Overview of ICAP Mode	2-23
Planning the HTTP Flow Using the ICAP Mode	2-25
HTTP Proxy in ICAP Mode (Single and Multiple IWSVA Servers) ..	2-25
2-25	

IWSVA ICAP Mode with Multiple Servers	2-27
Deploying in Reverse Proxy Mode	2-29
Overview of Reverse Proxy Mode	2-29
Planning the HTTP Flow Using Reverse Proxy Mode	2-30
HTTP Reverse Proxy in Dependent Mode	2-30
Deploying in Transparent Bridge Mode	2-33
Overview of Transparent Bridge Mode	2-33
Planning the HTTP Flow Using Transparent Bridge Mode	2-34
High Availability Deployment Mode	2-34
HA Deployment Mode Installation Guidelines	2-35

Chapter 3: Installing InterScan Web Security Virtual Appliance

Obtaining IWSVA	3-2
Using the Trend Micro Enterprise Solutions DVD	3-2
Downloading the Installation File	3-3
Installing IWSVA	3-4
Logging in to IWSVA for the First Time	3-11
Post-Installation Notes	3-11

Chapter 4: Migrating to InterScan Web Security Virtual Appliance

About Migration	4-2
Important Notes	4-2
Information Not Migrated	4-3
Overview of the Migration Process	4-4
Migrating from IWSVA 5.6, 6.0, 6.0 SP1 to IWSVA 6.5	4-5
Migrating from IWSVA 6.5 to Another IWSVA 6.5	4-6
After Migrating	4-7

Appendix A: Deployment Integration

IWSVA in a Distributed Environment	A-2
--	-----

Connection Requirements and Properties	A-2
Throughput and Availability Requirements	A-3
Integration with LDAP	A-4
Support Multiple Domains for Multiple LDAP Servers	A-4
LDAP Authentication in Transparent Mode	A-6
Integration with a Cisco Router using WCCP	A-7
Protecting an HTTP or FTP Server using Reverse Proxy	A-8
Integration with an ICAP Device	A-9
Setting up an ICAP 1.0-compliant Cache Server	A-9
Setting up ICAP for NetCache Appliances	A-9
Setting Up ICAP for the Blue Coat Port 80 Security Appliance	A-11
Setting up ICAP for Cisco CE ICAP Servers	A-14
Configuring Virus-scanning Server Clusters	A-16
Deleting a Cluster Configuration or Entry	A-16
Enabling “X-Virus-ID” and “X-Infection-Found” Headers	A-17

Appendix B: Tuning and Troubleshooting

IWSVA Performance Tuning	B-2
URL Filtering	B-2
LDAP Performance Tuning	B-2
LDAP Internal Caches	B-2
Disable Verbose Logging When LDAP is Enabled	B-4
LDAP Authentication in Transparent Mode	B-4
Troubleshooting	B-6
Troubleshooting Tips	B-6
Before Contacting Technical Support	B-6
Installation Problems	B-6
General Feature Problems	B-7

Appendix C: Best Practices for IWSVA Installation and Deployment

IWSVA Installation Overview	C-2
Properly Sizing Your Environment	C-4

Best Practice Suggestions	C-4
Selecting Deployment Method and Redundancy	C-5
Best Practice Suggestions	C-7

Appendix D: Maintenance and Technical Support

Product Maintenance	D-2
Maintenance Agreement	D-2
Renewing Your Maintenance Agreement	D-3
Contacting Technical Support	D-4
TrendLabs	D-5
Knowledge Base	D-5
Known Issues	D-6
Sending Suspicious Code to Trend Micro	D-6
Security Information Center	D-7

Appendix E: Creating a New Virtual Machine Under VMware ESX for IWSVA

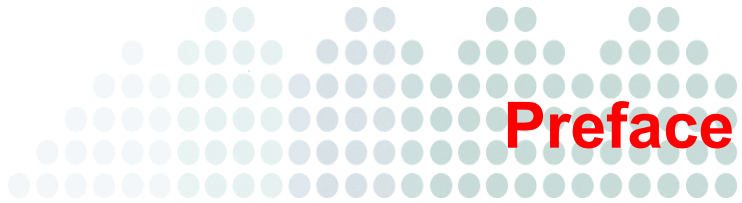
Introduction	E-2
Creating a New Virtual Machine	E-2
Powering On the IWSVA Virtual Machine and Completing the Installation	E-16

Appendix F: Creating a New Virtual Machine Under Microsoft Hyper-V for IWSVA

Introduction	F-2
IWSVA Support for Hyper-V	F-2
Hyper-V Virtualization Modes	F-2
Installing IWSVA 6.5 on Microsoft Hyper-V	F-3
Importing the IWSVA Image	F-7
Assigning Resources to IWSVA	F-9
Powering On the IWSVA Virtual Machine and Completing the	F-20
Installation	F-20

Accessing the IWSVA Web console F-28

Index



Preface

Welcome to the *Trend Micro™ InterScan™ Web Security Virtual Appliance 6.5 Installation Guide*. This guide helps you to get “up and running” by introducing InterScan Web Security Virtual Appliance (IWSVA), assisting with deployment, installation, migration (if necessary), initial configuration, troubleshooting, performance tuning, and main post-installation configuration tasks. It also includes instructions on testing your installation using a harmless test virus, troubleshooting, and accessing support.

This preface describes the following topics:

- *Audience on page x*
- *IWSVA Documentation on page xii*
- *Document Conventions on page xiii*
- *About Trend Micro on page xiii*

Audience

The IWSVA documentation is written for IT managers and system administrators working in enterprise environments. The documentation assumes that the reader has in-depth knowledge of networks schemas, including details related to the following:

- HTTP, HTTPS, FTP and other Internet protocols used by an enterprise
- VMware ESX administration experience when installing on VMware ESX and Microsoft Hyper-V experience when installing on Hyper-V virtual platforms.

The documentation does not assume the reader has any knowledge of antivirus or Web security technology.

How to Use this Guide

This guide contains the information you need to understand and use IWSVA.

If you are an advanced user, you might want to go directly to Chapter 3, *Installing InterScan Web Security Virtual Appliance*. If you are installing IWSVA on VMware ESX, see Appendix E, *Creating a New Virtual Machine Under VMware ESX for IWSVA*. If you are installing IWSVA on Microsoft Hyper-V, see Appendix F, *Creating a New Virtual Machine Under Microsoft Hyper-V for IWSVA*.

Chapter 1, <i>Preinstallation Planning</i>	This chapter describes the tasks you need to do before installing IWSVA. This includes planning for network traffic and HTTP and FTP service flows and ensuring that your server meets specific requirements.
Chapter 2, <i>Deployment Primer</i>	This chapter provides an overview of the different topologies in which IWSVA can be installed and helps you plan your server placement and network protection with HTTP and FTP service flows.
Chapter 3, <i>Installing InterScan Web Security Virtual Appliance</i>	This chapter describes how to obtain either a evaluation or production version of IWSVA and how to install the application.

Chapter 4, <i>Migrating to Inter-Scan Web Security Virtual Appliance</i>	This chapter describes the different migration scenarios and how to complete a migration to IWSVA.
Appendix A, <i>Deployment Integration</i>	This appendix describes deployment scenarios for IWSVA, involving several technologies such as LDAP, Cisco routers using WCCP, ICAP, and Transparent Bridge.
Appendix B, <i>Tuning and Troubleshooting</i>	This appendix describes performance tuning involving URL filtering and LDAP performance. Also, this appendix provides general troubleshooting tips and possible installation and feature issues.
Appendix C, <i>Best Practices for IWSVA Installation and Deployment</i>	This appendix describes the installation and deployment best practices that Trend Micro recommends for IWSVA
Appendix D, <i>Maintenance and Technical Support</i>	This appendix describes the maintenance agreement and the aspects of the Trend Micro Technical Support Center.
Appendix E, <i>Creating a New Virtual Machine Under VMware ESX for IWSVA</i>	This appendix describes how to create a new virtual machine for IWSVA under VMware ESX.
Appendix F, <i>Creating a New Virtual Machine Under Microsoft Hyper-V for IWSVA</i>	This appendix describes how to create a new virtual machine for IWSVA under Microsoft Hyper-V.

IWSVA Documentation

In addition to the *Trend Micro™ InterScan Web Security Virtual Appliance 6.5 Installation Guide*, the documentation set includes the following:

- **Administrator's Guide**—this guide provides detailed information about all IWSVA configuration options. Topics include how to update your software to keep protection current against the latest risks, how to configure and use policies to support your security objectives, and using logs and reports.
- **Readme file**—the Readme file contains late-breaking product information that is not found in the online or printed documentation. Topics include a description of new features, installation tips, known issues, and release history.

The latest versions of the Installation Guide, Administrator's Guide, and readme file are available in electronic form at:

http://downloadcenter.trendmicro.com/index.php?clk=tbl&clkval=1747®s=NABU&lang_loc=1#undefined

DVD ISO creation document—Entitled, *How to Use the Trend Micro IWSVA ISO File*, this document describes how to create a bootable installation DVD from an ISO file.

Online Help—Helps you configure all features through the user interface. You can access the online help by opening the Web console and then clicking the help icon. The purpose of Online Help is to provide “how to’s” for the main product tasks, usage advice, and field-specific information such as valid parameter ranges and optimal values. Online Help is accessible from the IWSVA management console.

- **Knowledge Base**—The Knowledge Base is an online database of problem-solving and troubleshooting information. It provides the latest information about known product issues. To access the Knowledge Base, open:

<http://esupport.trendmicro.com/support>

- **TrendEdge**—a program for Trend Micro employees, partners, and other interested parties that provides information on unsupported, innovative techniques, tools, and best practices for Trend Micro products. The TrendEdge database contains numerous documents covering a wide range of topics.

<http://trendedge.trendmicro.com>

Document Conventions

To help you locate and interpret information easily, the InterScan Web Security Virtual Appliance documentation uses the following conventions.

TABLE 1-1. Document Conventions

CONVENTION	DESCRIPTION
ALL CAPITALS	Acronyms, abbreviations, and names of certain commands and keys on the keyboard
Bold	Menus and menu commands, command buttons, tabs, options, and ScanMail tasks
<i>Italics</i>	References to other documentation
Monospace	Examples, sample command lines, program code, Web URL, file name, and program output
<u>Note:</u>	Configuration notes
<u>Tip:</u>	Recommendations
<u>WARNING!</u>	Reminders on actions or configurations that should be avoided

About Trend Micro

Trend Micro, Inc. is a global leader in network antivirus and Internet content security software and services. Founded in 1988, Trend Micro led the migration of virus protection from the desktop to the network server and the Internet gateway—gaining a reputation for vision and technological innovation along the way.

Today, Trend Micro focuses on providing customers with comprehensive security strategies to manage the impacts of risks to information, by offering centrally controlled server-based virus protection and content-filtering products and services. By protecting

information that flows through Internet gateways, email servers, and file servers, Trend Micro allows companies and service providers worldwide to stop viruses and other malicious code from a central point, before they ever reach the desktop.

For more information, or to download evaluation copies of Trend Micro products, visit our award-winning Web site:

<http://www.trendmicro.com>



Preinstallation Planning

This chapter describes the following:

- *Server Requirements on page 1-2*
- *Information Needed to Install IWSVA on page 1-6*
- *Planning Network Traffic Protection on page 1-9*

Server Requirements

Operating System

A purpose-built, hardened, and performance-tuned 64-bit operating system is included with InterScan Web Security Virtual Appliance (IWSVA).

Hardware Requirements

The minimum requirements specified provide enough resources to properly evaluate the product under light traffic loads. The recommended requirements specified provide general production sizing guidance.

For more detailed sizing information, refer to the *IWSVA Sizing Guide* at:

<http://trendedge.trendmicro.com/pr/tm/te/web-security.aspx>

Search for “sizing guide”.

Minimum Requirements:

- Single 2.0 GHz Intel™ Core2Duo™ 64-bit processor supporting Intel™ VT™ or equivalent
- 4GB RAM
- 50GB of disk space. (IWSVA automatically partitions the detected disk space as required)

Note: 50GB of disk space is only appropriate for the testing environment. See [Recommended Requirements: on page 1-2](#) for the disk space in the production environment.

- Monitor that supports 1024 x 768 resolution with 256 colors or higher

Recommended Requirements:

- Dual 2.8 GHz Intel Core2Duo 64-bit processor or equivalent for up to 4000 users
- Dual 3.16 GHz Intel QuadCore 64-bit processor or equivalent for up to 9500 users
- 300GB of disk space or more for log intensive environments. IWSVA automatically partitions the detected disk space as per recommended Linux practices

Server Platform Compatibility

IWSVA should install and operate without issues on many brands of “off-the-shelf” server platforms. However, Trend Micro cannot guarantee 100% compatibility with all brands and models of server platforms.

To obtain a list of Trend Micro certified servers that are compatible with IWSVA, access the following URL:

<http://www.trendmicro.com/go/certified>

To obtain a general list of available platforms that should operate with IWSVA, access the following URL:

<http://wiki.centos.org/HardwareList>

Trend Micro cannot guarantee full compatibility with the hardware components from this general list.

Component Installation

During installation, the following Trend Micro components are automatically installed:

- **Main Program**—Management console and the basic library files necessary for IWSVA.
- **Application Control**—Service to control application usage by protocol.
- **HTTP Malware Scan**—Service necessary for HTTP scanning (either ICAP or HTTP proxy) and URL blocking.
- **FTP Scanning**—Service necessary for FTP scanning.
- **URL Filtering**—Service necessary for URL filtering.
- **Applets and ActiveX Scanning**—Service necessary for scanning Java applets and ActiveX controls.
- **SNMP Notifications**—Service to send SNMP traps to SNMP-compliant network management software.
- **Control Manager Agent for IWSVA**—Files necessary for the Control Manager agent. You need to install the agent if you are using Control Manager (Trend Micro’s central management console).
- **Command Line Interface**—A custom CLI shell to manage IWSVA from the command line, either by TTY or SSH.

During installation, the following open-source application is installed for convenience, but is not enabled by default:

- **Squid**—To provide optional content caching.

Web Browser

To access the HTTP-based Web console, use any of the browsers in [Table 1-1](#).

TABLE 1-1. Supported Web Browsers for Web Console Access

BROWSER	WINDOWS		LINUX
	XP SP3	Windows 7 SP1	CentOS 6
IE 9.0, 10, 11		✓	
Firefox 15, 16+	✓		✓
Google Chrome 35+		✓	

To access the Internet through IWSVA, use any of the browsers in [Table 1-2](#).

TABLE 1-2. Supported Web Browsers for Internet Access

BROWSER	WINDOWS		LINUX	MAC
	XP SP3	WINDOWS 7 SP1	CENTOS 6	OS X
IE 9.0, 10, 11		✓		
Firefox 30+	✓		✓	
Safari 5, 6+				✓
Google Chrome 35+	✓	✓		

Other Requirements

- **Database Requirements:**
 - PostgreSQL v9.2.8 (included)

- **Internet Content Adaptation Protocol (ICAP):**

- NetApp™ NetCache™ release 6.0.1
- Blue Coat Systems™ SGOS v5
- Cisco ICAP servers: CE version 5.3
- Any cache server that is ICAP 1.0 compliant

- **Directory Servers:**

To configure policies based on Lightweight Directory Access Protocol (LDAP) users and groups, IWSVA can integrate with the following LDAP directories:

- Microsoft Active Directory 2003, 2008 and 2012.
- Linux OpenLDAP Directory 2.2.16 or 2.3.39
- Sun™ Java System Directory Server 5.2 (formerly Sun™ ONE Directory Server)
- Novell eDirectory 8.8

- **Transparent Bridge:**

- Each transparent bridge segment supported by IWSVA requires two network interface cards.

- **Web Cache Content Protocol (WCCP):**

Trend Micro recommends using the following Cisco IOS versions when configuring WCCP with IWSVA:

- 12.2(0) to 12.2(22). Avoid using releases 23 and above within the 12.2 family
- 12.3(10) and above. Avoid using releases 0-9 in the 12.3 family
- IOS 15.1(1)T3 or above should be used

- **Other Requirements:**

- For proxy deployment modes, network clients must be able to access the HTTP port of the IWSVA server that is selected during the install.
- IWSVA server and clients must be able to communicate with each other over the corporate network.

Information Needed to Install IWSVA

You can either purchase or download a 30-day trial version of IWSVA. The 30-day trial version provides all the functionality of IWSVA.

The IWSVA setup program prompts you for required information, depending on the options chosen during installation.

Before beginning, determine the type of installation you should do:

- For new customers doing fresh installations, see [Chapter 2, Deployment Primer on page 2-1](#) for product placement advice and [Chapter 3, Installing InterScan Web Security Virtual Appliance on page 3-1](#).
- For returning customer migrating from older versions of IWSVA, see [Chapter 4, Chapter 4, Migrating to InterScan Web Security Virtual Appliance](#) to migrate data and [Chapter 3, Installing InterScan Web Security Virtual Appliance on page 3-1](#) for fresh installation instructions.

Fresh Installation

IWSVA only supports fresh installations if you are running a version of IWSVA older than IWSVA 6.5. Upgrading an existing IWSS or IWSA installation is not supported. The fresh installation process formats your existing system to install IWSVA. (see [Installing IWSVA on page 3-4](#)).

Migration

IWSVA 6.5 supports existing configuration and policy data migration from the following Trend Micro Products:

- InterScan Web Security Virtual Appliance 5.6 (same language version)
- InterScan Web Security Virtual Appliance 6.0 (same language version)
- InterScan Web Security Virtual Appliance 6.0 SP1 (same language version)
- InterScan Web Security Virtual Appliance 6.5 (same language version)

For more information about migration, see [Chapter 4, Migrating to InterScan Web Security Virtual Appliance](#).

Type of Proxy Configuration

IWSVA supports multiple deployment modes.

- Forward proxy where clients directly connect to IWSVA.
- Upstream proxy to another existing internal proxy server
- ICAP Server to an existing ICAP 1.0 compliant cache controller
- WCCP client to a configured WCCP-enabled router or firewall
- Transparent Bridge Mode
- Reverse proxy to protect a Web server

The deployment is configured after the IWSVA installation and it can be changed using the Deployment Wizard in the Web console. Each transparent bridge segment supported by IWSVA requires two network interface cards. See [Planning the HTTP Flow on page 2-5](#) and [Planning FTP Flows on page 2-7](#).

Control Manager Server Information

Control Manager registration is performed through the IWSVA Web UI after the IWSVA installation is complete.

Database Type and Location

IWSVA uses the PostgreSQL database for policies, rules, and configuration settings. A local PostgreSQL installation is performed during IWSVA installation.

SNMP Notifications

If you plan to use SNMP notifications, the IWSVA setup program installs the appropriate SNMP libraries.

Web Console Password

Access to the IWSVA Web console is controlled initially through a default username “admin.” The password is set during installation from the ISO file.

Tip: For security reasons, Trend Micro recommends that you change the admin password after you log in to the Web console the first time.

Tip: The password for OS account "root" and CLI account "enable" and IWSS account "admin" are the same after installing from ISO file. The IWSVA administrator can make them different. For details, please refer to the Administrator Guide.

Command Line Access

IWSVA provides a Command Line Interface (CLI) to allow configuration of the appliance using an industry standard CLI syntax. The CLI offers additional commands and functionality to manage, troubleshoot, and maintain within IWSVA. The CLI can be accessed using a local console keyboard and monitor or remotely through SSHv2.

Proxy for Internet Updates

If you have a proxy host between IWSVA and the Internet, you must configure the IWSVA's proxy settings in order to receive updates from Trend Micro. From the menu, choose **Updates > Connection Settings** to configure the upstream proxy settings. See the Administrator's Guide for more details.

Activation Codes

Activating the three IWSVA modules (core program, URL Filtering, and Applet and ActiveX Scanning) requires a single activation code. IWSVA includes one registration key for all the modules. During product registration, the Registration Key is exchanged for an Activation Code that "unlocks" the program. You can register the installation and exchange the registration key for an activation code from a link in the setup program. Alternatively, you can register and obtain an activation code before installing by visiting Trend Micro's online registration Web site at:

<https://olr.trendmicro.com>

Planning Network Traffic Protection

IWSVA can be deployed in different modes to help secure your network. (See Chapter 2, *Deployment Primer*). IWSVA supports the following deployment topologies:

- *Transparent Bridge Mode on page 1-9*
- *Forward Proxy Mode on page 1-10*
- *Reverse Proxy Mode on page 1-10*
- *ICAP Mode on page 1-10*
- *Simple Transparency Mode on page 1-10*
- *WCCP Mode on page 1-11*

Transparent Bridge Mode

IWSVA acts as a bridge between network devices such as routers and switches. IWSVA scans passing HTTP and FTP traffic without the need to modify the browser or network settings. This is the easiest deployment mode with traffic being scanned in both directions.

An additional dependency for this deployment mode is two network interface cards per transparent bridge segment protected with IWSVA. Trend Micro recommends that the following network cards be used to ensure maximum compatibility in this deployment mode:

- Broadcom NetXtreme Series
- Intel Pro/1000 PT Dual Port Server Adapter
- Intel Pro/1000 MF Dual Port Fiber

IWSVA 6.5 features an optional High Availability (HA) deployment mode. In this mode, two IWSVA 6.5 nodes are configured as an HA cluster. In this configuration one of the nodes is designated as the parent, or active node, and is connected to a child, or passive node, through a “heartbeat” link.

In HA deployment mode, the parent node processes all “live” traffic while the child node remains in a passive state. If a failure in the parent node is detected, the child node then becomes the active node and the parent node is taken offline.

The HA deployment mode is only supported in Transparent Bridge mode.

For further details on the Transparent Bridge Mode, see [Deploying in Transparent Bridge Mode on page 2-33](#).

Forward Proxy Mode

IWSVA acts as an upstream proxy for network clients. Client browser settings must be configured to redirect traffic to IWSVA. IWSVA scans HTTP and FTP traffic and there is no separate need for another dedicated proxy server. Content is scanned in both the inbound and outbound directions.

The Forward Proxy Mode also forwards all traffic to another upstream proxy server.

For more details on the Forward Proxy mode, see [Deploying in Forward Proxy Mode on page 2-10](#).

Reverse Proxy Mode

IWSVA is deployed in front of a Web server. IWSVA scans HTTP and FTP content from the clients that are uploaded to a Web server as well as content that is downloaded from the Web server to the clients and helps secure the Web server.

For more details on the Reverse Proxy Mode, see [Deploying in Reverse Proxy Mode on page 2-29](#).

ICAP Mode

IWSVA acts as an ICAP proxy and accepts ICAP connections from an ICAP v1.0 compliant cache server. Cache servers can help reduce the overall bandwidth requirements and reduce latency by serving cached content locally. IWSVA scans and secures all content returned to the cache server and to the clients.

For more details on the ICAP mode, see [Deploying in ICAP Mode on page 2-23](#).

Simple Transparency Mode

IWSVA's Forward Proxy Mode supports simple transparency with popular Layer 4 load balancing switches and provides HTTP scanning without the need to modify the client's browser settings.

For more details on the Simple Transparency Mode, see [HTTP Proxy in Simple Transparency Mode on page 2-16](#).

WCCP Mode

IWSVA works with Cisco's WCCP protocol to provide content scanning for Web and FTP traffic without the need to modify client configurations and allows redundancy and scalability to be designed into the architecture without additional hardware.

For more details on the WCCP Mode, see [Deploying in WCCP Mode on page 2-23](#).



Chapter 2

Deployment Primer

This chapter describes the following:

- *Identifying Your Server Placement on page 2-2*
- *Planning Network Traffic Flows on page 2-4*
- *Deploying in Forward Proxy Mode on page 2-10*
- *Deploying in ICAP Mode on page 2-23*
- *Deploying in Reverse Proxy Mode on page 2-29*
- *Deploying in Transparent Bridge Mode on page 2-33*

Identifying Your Server Placement

Before installing InterScan Web Security Virtual Appliance (IWSVA), you will need to review the IWSVA deployment modes and decide how to install IWSVA into your network environment to best meet your needs. This involves identifying where to place the IWSVA server in the network and identifying the best deployment mode for your network.

Today's enterprise network topologies typically fall into one of the following two categories:

- Two firewalls with a Demilitarized Zone (DMZ)
- One firewall without a DMZ.

The ideal location for the IWSVA server depends upon the topology in use.

Two Firewalls with DMZ

Given today's security concerns, many organizations have implemented a topology consisting of two firewalls (one external and one internal). These firewalls divide the network into two main areas:

- **The DMZ**—The DMZ is located between the external and internal firewalls. Hosts that reside in this area can accept connections from servers that are external to the organization's network. The configuration of the external firewall allows packets from external computers to reach only servers inside the DMZ.

- **Corporate LAN**—These segments are located behind the internal firewall. The configuration of the internal firewall passes traffic to machines on the corporate LAN only when the traffic originates from computers inside the DMZ.

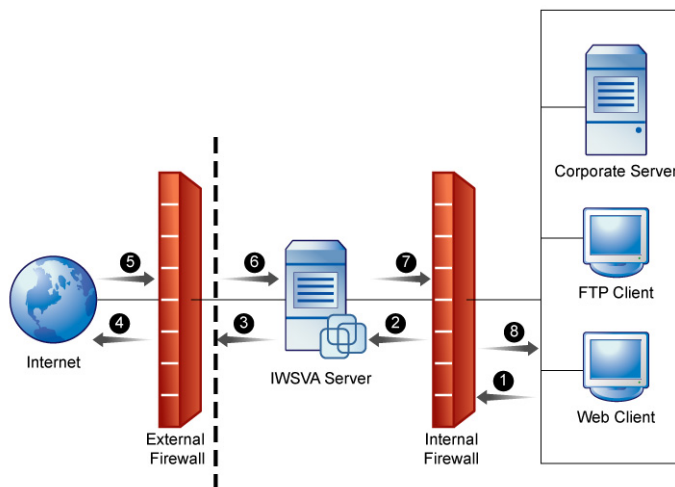


FIGURE 2-1. Two Firewalls with DMZ

This topology requires that all data inbound from the external servers (such as those on the Internet) first pass through a server in the DMZ. It also requires that certain types of data (for example HTTP and FTP packets), outbound from internal segments, pass through a server in the DMZ. This forces the use of proxies such as IWSVA.

One Firewall with No DMZ

Some organizations have a firewall, but no DMZ. When using the “no DMZ” topology, place the IWSVA server behind the firewall.

- Because the IWSVA server is not isolated from the corporate LAN, there is one less hop between external machines and machines on the corporate LAN. As shown in the diagram, this results in two less steps for processing a request, one outbound and one inbound.

- The firewall configuration allows connections to machines on the corporate LAN. For security, the firewall must limit the types of data that can reach machines on the LAN. For example, the firewall might allow HTTP data from the Internet to reach only the IWSVA server.

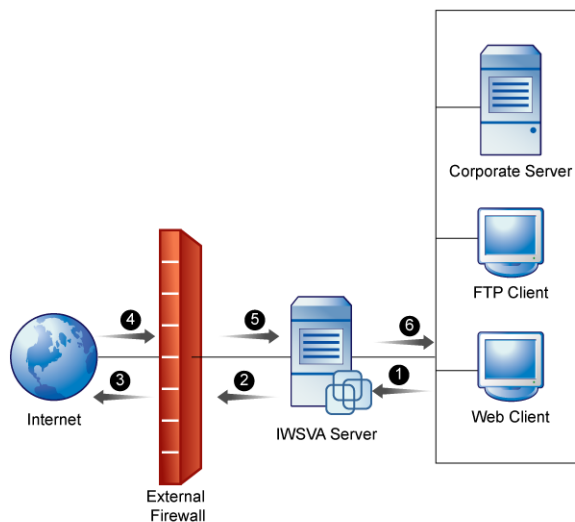


FIGURE 2-2. One Firewall with DMZ

Planning Network Traffic Flows

There are several ways to direct network traffic through IWSVA for protection, including the following:

- Reconfiguring client settings to point to IWSVA as a proxy
- Using a Layer 4 switch
- Using an ICAP-enabled proxy to redirect selected traffic for scanning
- Using WCCP to direct selected traffic for scanning
- Forwarding traffic from another proxy and/or caching device

See Appendix A, [Deployment Integration starting on page A-1](#) for more details.

Each network traffic flow configuration has implications for configuring IWSVA, configuring the network, and for network security.

Create a flow plan for the network traffic by doing the following:

- Understand each IWSVA service's purpose and function
- Determine each service's valid data sources. For example, does the HTTP service receive requests directly from the HTTP browsers, or indirectly through an ICAP proxy device?
- Determine which ports to use for the service. For instance, by default, the HTTP proxy service uses port 8080, and the FTP service uses port 21. However, if another application or service is using port 8080, the administrator must configure the HTTP proxy service to use a different port.
- Determine each service's valid data destinations. For example, does the HTTP proxy service send validated requests directly to the Web site? Or, does the HTTP proxy service send the validated request to an upstream HTTP proxy?
- Add in any service-specific considerations. For instance, the HTTP service flow might include an ICAP device, but the FTP service flow does not.
- If you want IWSVA to see traffic across all ports, ensure that the upstream switch to IWSVA is passing all traffic to IWSVA while in Transparent Bridge mode.

Using the information gathered in the previous paragraphs, administrators can determine which one of the possible flows is best to use for the installation.

Planning the HTTP Flow

If you are only interested in IWSVA filtering HTTP traffic, then consider the following deployment mode options:

- HTTP Proxy
- ICAP device
- WCCP device
- Transparent Bridge
- Simple Transparency
- Reverse Proxy

The flow involving an ICAP or WCCP device is very different from the flows that do not involve ICAP or WCCP devices.

There are seven possible deployment modes:

Transparent Bridge Settings

- **Transparent Bridge mode** — Use the transparent bridge mode when clients' computers are not configured to use the IWSVA server as their proxy, but still need to connect to the Internet through IWSVA. All network traffic, including HTTP/HTTPS and FTP, is visible to IWSVA in this mode.
- **Transparent Bridge High-Availability (HA) mode** — Use this mode when two IWSVA devices are configured as a cluster to offer continuous service if one of the IWSVA cluster members fails.

Forward Proxy Settings:

- **Standalone mode** — Use this flow when ICAP devices are not being used with IWSVA, and IWSVA connects directly to the Internet.
- **Dependent mode** — Use this flow when ICAP devices are not being used with IWSVA, and IWSVA cannot connect directly to the Internet, but must instead connect through another HTTP proxy. This is can be accomplished in one of the following ways:
 - Proxy-ahead mode
 - Proxy-behind mode (not recommended)
 - Double-proxy mode
- **Forward Proxy with Transparency** — Use this mode when using an L4 (Load Balancing) switch.
- **WCCP** — Use the WCCP protocol in conjunction with WCCP enabled devices with IWSVA

Reverse Proxy Settings:

- **Reverse proxy mode** — Use this flow to protect a Web server with a proxy server by placing the HTTP proxy between the Internet and the Web server. (Used by ISPs and ASPs to protect the upload traffic against viruses and by organizations with complex Web sites that need a centralized point of access control.)

ICAP Proxy Settings:

- **ICAP protocol mode** — Use the ICAP protocol flow to use ICAP devices with IWSVA

Each configuration has implications for configuring IWSVA, configuring the network, and for network security.

HTTPS Decryption

IWSVA closes the HTTPS security loophole by decrypting and inspecting encrypted content for malware and URL access policy violations. You can define policies to decrypt HTTPS traffic from selected Web categories. While decrypted, data is treated the same way as HTTP traffic to which URL filtering and scanning rules can be applied.

IWSVA supports HTTPS decryption and scanning in the following modes:

- Transparent bridge
- WCCP
- Forward proxy

Planning FTP Flows

There are two possible FTP flows: standalone and dependent. They are similar to the standalone and dependent-mode flows for HTTP service. Each requires a different configuration and has its own implications including:

- **Standalone**—the IWSVA server acts as an FTP proxy server between the requesting client and the remote site, brokering all transactions
- **Dependent**—IWSVA works in conjunction with another FTP proxy server within a LAN

FTP Proxy in Standalone Mode

To scan all FTP traffic in and out of the LAN, set up the FTP scanning module so that it “brokers” all such connections. In this case, clients FTP to the IWSVA server, supply the log on credentials to the target site, and then allow the IWSVA FTP server to make the connection. The remote site transfers the files to IWSVA FTP. Before delivering the files to the requesting clients, the IWSVA FTP server scans the files for viruses and other security risks.

The implications for the FTP standalone flow are:

- IWSVA must have access to the target FTP servers
- There is one less step in the flow, compared to the FTP proxy mode

To configure FTP clients to use this flow:

- Set the IWSVA server as a FTP proxy
- Set the username to be `username@targetftp-server`, instead of the normal username

Note: IWSVA FTP works with most firewalls, usually requiring only a modification to the firewall to open a port for the FTP proxy.

FTP requests follow this sequence:

1. The FTP client sends a request to the IWSVA FTP service.
2. The IWSVA FTP service validates the request (for example, the file type is not blocked). If the request is valid, the IWSVA FTP service attempts to connect to the appropriate FTP server on the Internet. If the connection succeeds, the IWSVA FTP service sends the request to the target FTP server.
3. The FTP server on the Internet responds to the request, ideally with the requested file.
4. The IWSVA FTP service scans the returned data for unwanted content. If it finds any unwanted content, it returns an appropriate message to the FTP client. Otherwise, it returns the requested data to the FTP client.

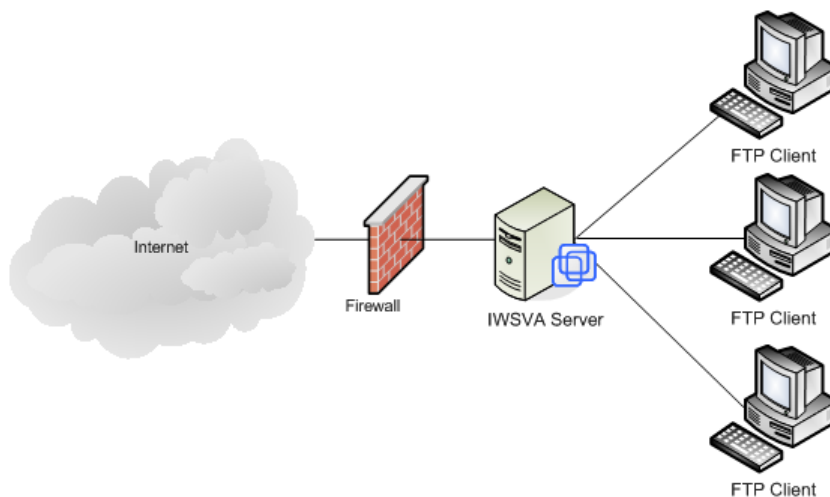


FIGURE 2-3. FTP Proxy in Standalone Mode

FTP Proxy in Dependent Mode

You can also install IWSVA FTP on a dedicated machine between an upstream proxy and the requesting clients. Using this setup adds other FTP features (for example, access blocking, logging, and filtering) to supplement the existing FTP proxy.

IWSVA's FTP-proxy mode, shown in [Figure 2-4](#), is analogous to the dependent-mode flow of the HTTP service. Because it carries a performance penalty of an extra hop and extra processing by the other FTP proxy server, only use this mode if your organization does not allow the IWSVA Server to access the Internet directly.

If the other FTP proxy server uses a store-and-forward technique, the performance penalty is more noticeable on large files because the other FTP proxy first downloads the file and passes it on to the IWSVA FTP service. Additionally, the other FTP proxy must have sufficient free disk space to hold all transfers in progress.

Unlike the HTTP dependent-mode service, which has the possible benefit of cached requests, most FTP proxy servers do not cache requests.

FTP Dependent Mode also protects FTP servers from upload and download threats.

FTP requests follow this sequence:

1. The FTP client sends a request to the IWSVA FTP service.
2. The IWSVA FTP service validates the request (for example, the file type is not blocked). If the request is valid, the IWSVA FTP service relays it to the other FTP proxy or the FTP server being protected by IWSVA.
3. The FTP server on the Internet responds to the request, ideally with the requested file.
4. The IWSVA FTP service scans the returned data for unwanted content. If it finds any unwanted content, it returns an appropriate message to the FTP client. Otherwise, it returns the requested data to the FTP client.

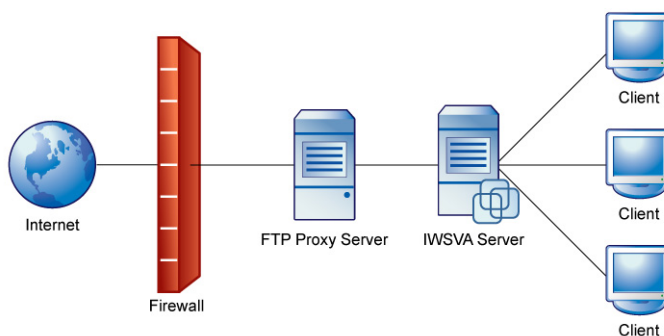


FIGURE 2-4. FTP Proxy in Dependent Mode

Deploying in Forward Proxy Mode

Overview of Forward Proxy Mode

There are two kinds of Forward Proxy: transparent and non-transparent. Transparent proxy can be achieved by a Layer 4 switch (Simple Transparency) or a WCCP-enabled switch (WCCP mode).

IWSVA configured in forward proxy mode provides the following configuration options to enable client protection:

- [Reconfiguring Client Settings on page 2-11](#)
- [Using a Layer 4 Switch on page 2-12](#)
- [Using a WCCP-enabled Switch or Router on page 2-14](#)

Additionally, when IWSVA is configured in this mode, all traffic can be configured to be sent to an additional upstream proxy server if applicable.

The configuration options are explored in the table that follows to provide information that will help you decide which deployment configuration to use.

During the IWSVA installation, select to install IWSVA in the Forward Proxy Mode to support this configuration.

Reconfiguring Client Settings

HTTP clients (browser or proxy servers) can be configured to contact IWSVA as a proxy. This configuration change ensures that the client's Web traffic is forwarded to IWSVA. The HTTP scanning service must be enabled in the HTTP Proxy mode to process this traffic.

FTP clients must contact IWSVA instead of the destination server, and use a modified handshake to supply the FTP server address. The FTP scanning module must be installed and configured in the standalone mode to process this traffic.

TABLE 2-1. Reconfiguring the Client Settings

ADVANTAGE	LIMITATION
No additional hardware required	Administrator have to control the settings for all computers. (Guest computers can have difficulties.)

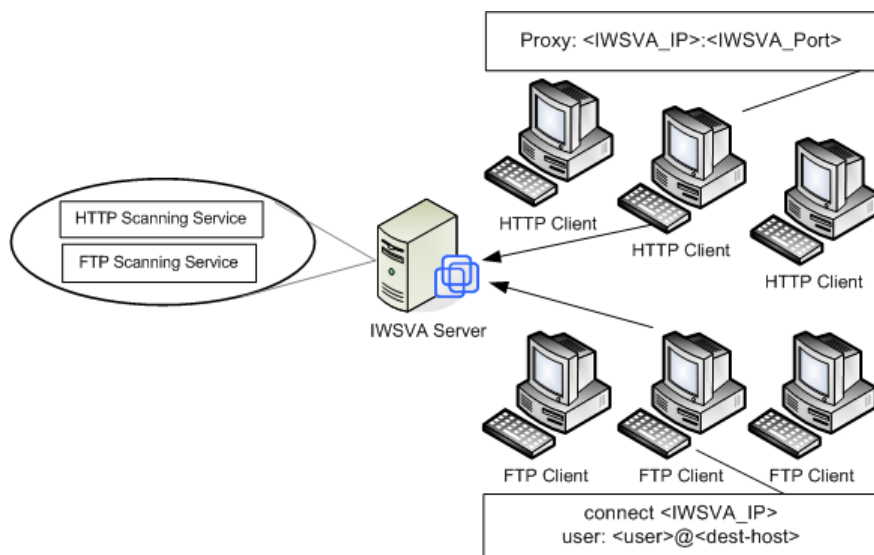


FIGURE 2-5. Reconfiguring the Client Settings

Using a Layer 4 Switch

Transparency is the functionality whereby client users do not need to change their Internet connection's proxy settings to work in conjunction with IWSVA. Transparency is accomplished with a Layer 4 switch that redirects HTTP packets to a proxy server, which then forwards the packets to the requested server.

IWSVA supports the “simple” type transparency. Simple transparency is supported by most Layer 4 switches. While it is compatible with a wide variety of network hardware from different manufacturers, configuring simple transparency does impose several limitations:

- When using simple transparency, the User Identification method to define policies is limited to IP addresses and host names; configuring policies based on LDAP is not possible.
- FTP over HTTP is not available; therefore, links to ftp:// URLs might not work if your firewall settings do not allow for FTP connections. Alternatively, links to http:// URLs might work, but the files will not be scanned.

- Simple transparency is not compatible with some older Web browsers when their HTTP requests do not include information about the host.
- HTTP requests for servers that use a port other than the HTTP default port 80 are redirected to IWSVA. This means SSL (HTTPS) requests are typically fulfilled, but the content is not scanned.
- Do not use any source NAT (IP masquerade) downstream of IWSVA, because IWSVA needs to know the IP address of the client to clean.
- A DNS server is needed for DCS to resolve the client machine name from its IP address in order to perform a cleanup.

A Layer 4 switch can be used to redirect HTTP traffic to IWSVA. The HTTP Scanning Service must be enabled in the HTTP Proxy mode.

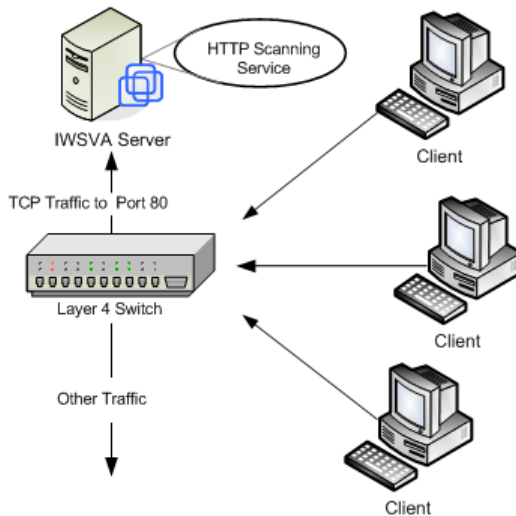


FIGURE 2-6. Using a Layer 4 Switch

During the installation, ensure that the check box that enables transparency to support this deployment mode is checked.

TABLE 2-2. Using a Layer 4 Switch

ADVANTAGES	LIMITATIONS
Transparent to clients	Traffic interception must be port-based (not protocol-based) for one port. If the non-standard port is used for HTTP, it bypasses the switch.
Simple to establish	The switch-based redirection cannot be used for the FTP traffic.
	No LDAP support

Using a WCCP-enabled Switch or Router

IWSVA supports WCCP v2.0 and forwarding methods based on GRE and L2 (layer 2).

When using WCCP transparency, FTP downloads are also scanned. With the ability to support WCCP v2.0, IWSVA is able to participate in a cluster of IWSVA devices to provide a load balancing WCCP Web security platforms.

Advantages of using WCCP:

- Transparency for the client side
- Scalable

Limitations of using WCCP:

- Cisco proprietary

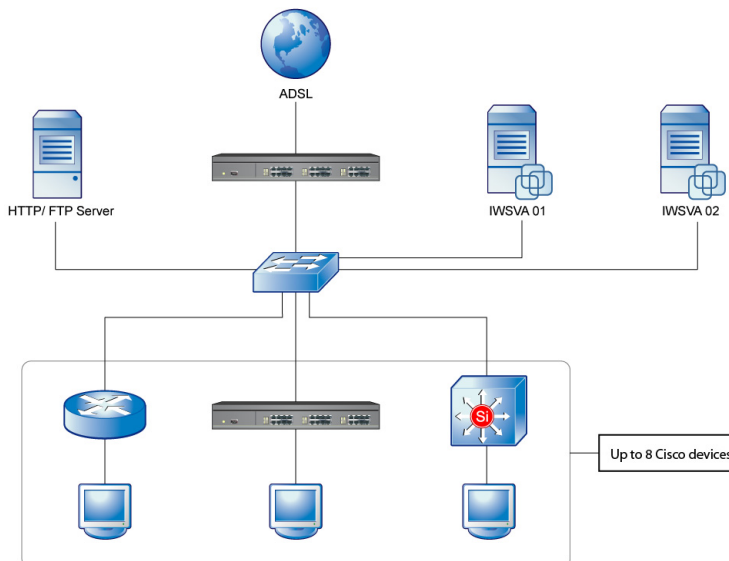


FIGURE 2-7. IWSVA deployment in a WCCP environment

Planning the HTTP Flow Using the Forward Proxy Mode

For complete details on implementing the Forward Proxy Mode, see [Forward Proxy Mode on page 1-10](#).

HTTP Proxy in the Standalone Mode

The simplest configuration is to install IWSVA in standalone mode, with no upstream proxy. In this case, IWSVA acts as a proxy server for the clients. Advantages of this configuration are its relative simplicity and that there is no need for a separate proxy server. A drawback of a forward proxy in standalone mode is that each client must configure the IWSVA device as their proxy server in their browser's Internet connection

settings. This requires cooperation from your network users, and also makes it possible for users to exempt themselves from your organization's security policies by reconfiguring their Internet connection settings.

Note: If you configure IWSVA to work in standalone mode, each client on your network needs to configure their Internet connection settings to use the IWSVA device and port (default 8080) as their proxy server.

Web page requests follow this sequence:

1. The Web client sends a request to the HTTP service.
2. The HTTP service validates the request, if the URL is not blocked. If the URL is invalid (blocked), the HTTP service sends the HTTP client an appropriate notice, completing the transaction. If the URL is valid, the HTTP service attempts to connect to the applicable Web server.
3. The contacted Web site returns a response from the Web server to the HTTP service.
4. The HTTP service scans the content for unwanted data and returns the appropriate response to the client.

TABLE 2-3. HTTP Proxy in Standalone Mode

ADVANTAGE	LIMITATION
Simple to install and deploy.	Slow connection reaches maximum allowed connections limit.
	Each client on the network must configure their proxy server.

HTTP Proxy in Simple Transparency Mode

Multiple IWSVA servers can be installed to balance your network traffic and scanning load. In this installation example, a Layer 4 switch receives clients requests and then forwards them to the IWSVA servers.

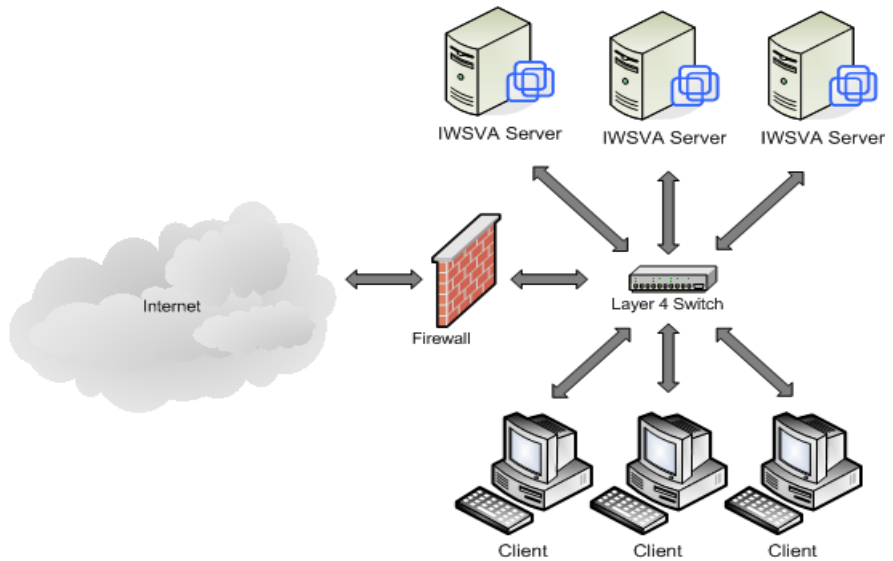
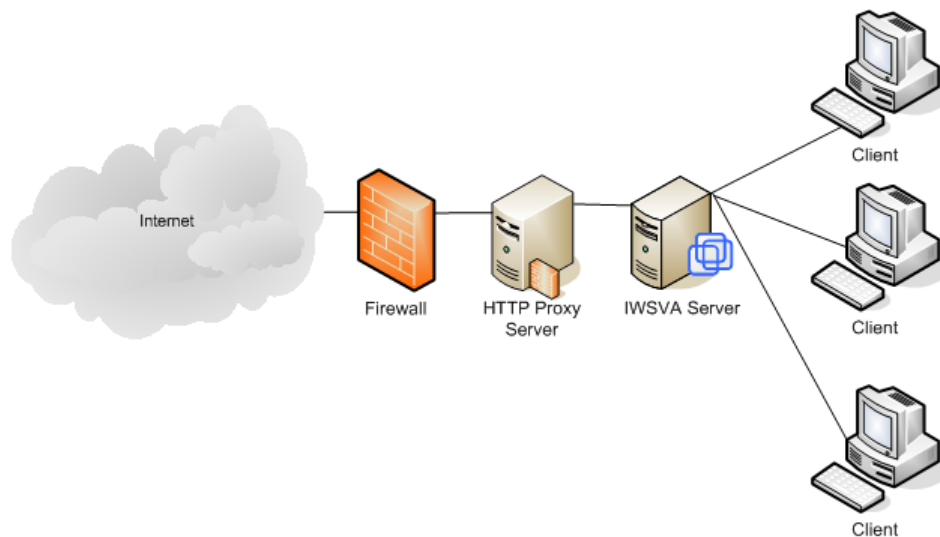


FIGURE 2-8. Use a Layer 4 switch to load balance between IWSVA servers in simple transparent mode

HTTP Proxy in Dependent Mode (Proxy Ahead)

For HTTP browsers to use this flow, configure the browsers to proxy through the IWSVA server, by default at port 8080.



HTTP Proxy in Dependent Mode (Proxy Ahead)

Web page requests follow this sequence:

1. The Web client sends a request to the HTTP service.
2. The HTTP service validates the request.
 - If the URL is invalid (blocked), the HTTP service sends the HTTP client an appropriate notice, completing the transaction.
 - If the URL is valid, the HTTP service forwards the request to an upstream HTTP proxy server.
3. The upstream proxy server performs its processing, then forwards the request to the Web site on the Internet.
4. The contacted Web site returns a response (ideally a Web page) to the HTTP proxy server.
5. The HTTP proxy server performs its processing on the returned data, then forwards the response data to the IWSVA HTTP service.

6. The HTTP service scans the content for unwanted data and returns an appropriate response to the HTTP client.

TABLE 2-4. HTTP Proxy in Dependent Mode (Proxy Ahead)

ADVANTAGES	LIMITATIONS
Proxy server controls timing and content availability behavior.	IWSVA has to scan every response—even when cached.
It is more secure—configuration changes will affect cached objects.	
IWSVA does not wait for the downloading of already cached objects.	

HTTP Proxy in Dependent Mode (Proxy Behind)

The proxy behind flow consists of a caching proxy placed between the HTTP client and the IWSVA server without using ICAP. Organizations typically use this flow to increase performance, as with ICAP.

WARNING! Two security trade-offs exist for this potential performance enhancement:

1. If the cache contains data with a virus, for which there was no pattern when the data hit the cache, the IWSVA HTTP service cannot prevent the spread of the virus.
 2. Similarly, if a policy regarding valid content changes, or unauthorized users request data that exists in the cache (for authorized users), the HTTP service cannot prevent subsequent unauthorized access to this data.
-

Instead of using the proxy-behind flow, Trend Micro recommends that administrators use an ICAP caching device. This solution provides the performance enhancements of caching without the security issues of proxy-behind topology.

Web page requests follow this sequence:

1. The Web client sends a request to the HTTP proxy server.
2. The proxy server forwards the request to IWSVA.
3. IWSVA validates the request using URL Filtering/URL Access Control:
 - If the URL is invalid (blocked), the HTTP service sends the HTTP client an appropriate notice, completing the transaction.
 - If the URL is valid, the HTTP service forwards the request to the Web server on the Internet.
4. The contacted Web server returns a response (ideally a Web page) to IWSVA.
5. IWSVA performs its processing on the returned data (virus, spyware, ActiveX scanning), then forwards the appropriate response/data to the proxy server.
6. The Proxy server caches the data (if cacheable), then delivers the response/data to the HTTP client.

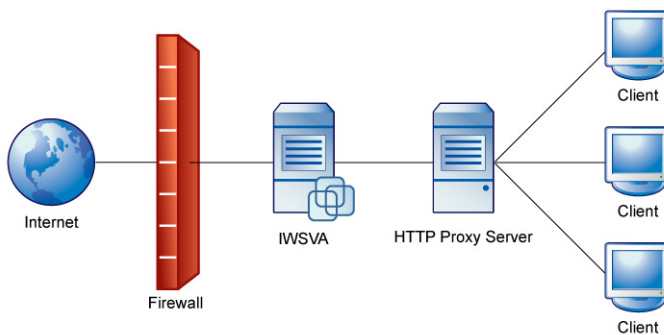


FIGURE 2-9. HTTP Proxy in Dependent Mode (Proxy Behind)

TABLE 2-5. HTTP Proxy in Dependent Mode (Proxy Behind)

ADVANTAGES	LIMITATIONS
No configuration changes required on the clients.	Configuration changes or pattern updates on IWSVA do not affect cached objects.

TABLE 2-5. HTTP Proxy in Dependent Mode (Proxy Behind) (Continued)

ADVANTAGES	LIMITATIONS
Cached objects are downloaded by clients directly from the Proxy server, which minimizes delays.	

HTTP Double Proxy in Dependent Mode

Double proxy configuration requires two caching proxies. The first proxy is placed between the HTTP client and the IWSVA server, and other one is placed between the IWSVA server and the Internet. This is typically used to get the advantages of the two configurations of the dependent modes: Proxy-ahead and Proxy-behind.

Web page requests follow this sequence:

1. The Web client sends a request to the first proxy server.
2. The first proxy server forwards the request to IWSVA.
3. IWSVA validates the request using URL Filtering/URL Access Control:
 - If the URL is invalid (blocked) the HTTP service sends the HTTP client an appropriate notice, completing the transaction.
 - If the URL is valid, the HTTP service forwards the request to the second proxy server.
4. The second proxy server performs its processing, then forwards the request to the Web server on the Internet.
5. The contacted Web server returns a response (ideally a Web page) to second proxy server.
6. The second proxy server caches the data (if cacheable), then delivers the response/data to IWSVA.
7. IWSVA performs its processing on the returned data (Virus, Spyware, ActiveX scanning), then forwards the appropriate response/data to the first proxy server.

8. The first proxy server caches the data (if cacheable), then delivers the response/data to the HTTP client.

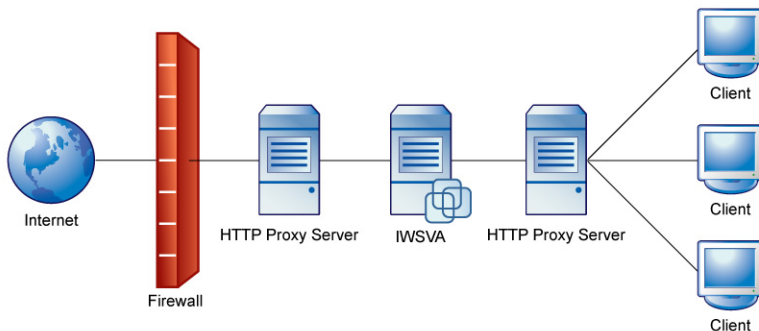


FIGURE 2-10. HTTP Double Proxy in Dependent Mode

TABLE 2-6. HTTP Double Proxy in Dependent Mode

ADVANTAGES	LIMITATIONS
Proxy server controls timing and content availability behavior.	Costs more—additional proxy servers are needed.
IWSVA does not wait for the downloading of already cached objects.	
No configuration change required on the clients.	

Deploying in WCCP Mode

Note: For advanced information on deploying in WCCP mode, see the *IWSVA 6.5 Administrator's Guide*, "Appendix F, WCCP Deployment & Troubleshooting."

HTTP Proxy in WCCP Mode (Single and Multiple IWSVA Servers)

IWSVA configured in the WCCP Mode processes Web page requests in the following sequence:

1. The Web client sends a request to the Web server.
2. The router intercepts the request and forwards the request to IWSVA.
3. IWSVA establishes a connection with the Web client.
4. IWSVA forwards the client requests to the Web server and establishes a connection with the Web server.
5. IWSVA begins sending data between the Web client and the Web server.
6. If the data has no virus, then IWSVA sends the data to the Web client.
7. If the data has a virus, then IWSVA sends the blocked page to the Web client.

Deploying in ICAP Mode

Overview of ICAP Mode

Internet Content Adaptation Protocol (ICAP) is designed to forward an HTTP response or request to third-party processors and collect the results. The component that sends the ICAP request is called the *ICAP-client*. A component that processes the request is called an *ICAP-server*.

When IWSVA is configured in ICAP mode, it processes requests from any ICAP-compliant client. Officially, Trend Micro supports the following ICAP version 1.0 implementations: NetCache, Blue Coat, Cisco Content Engines (CE), and Squid.

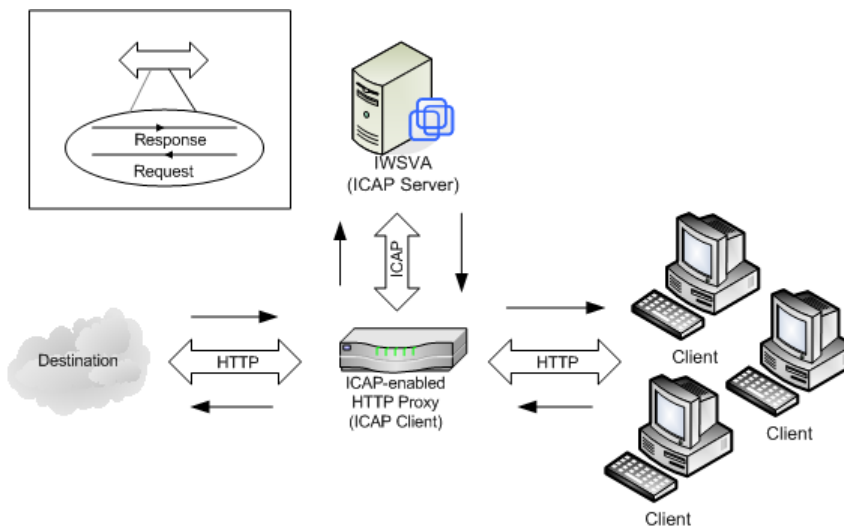


FIGURE 2-11. Using an ICAP-enabled Proxy

TABLE 2-7. ICAP-enabled Proxy

ADVANTAGES	LIMITATIONS
ICAP allows scanning of only new and necessary content.	Up front cost of ICAP equipment.
Reduced and selective scanning enhances performance	Adds extra steps in the IWSVA installation process.
Increased resource efficiencies reduce the number of IWSVA server hardware needed.	Requires management.

Planning the HTTP Flow Using the ICAP Mode

For complete details on implementing the ICAP Mode, see *ICAP Mode on page 1-10*.

HTTP Proxy in ICAP Mode (Single and Multiple IWSVA Servers)

This section discusses the flow of a typical HTTP GET request using both an ICAP device and IWSVA servers. In these flows, IWSVA interacts with the ICAP device, in response to ICAP rules. This is very different from other flows where IWSVA receives URL requests from HTTP clients. To use these flows for HTTP browsers, configure the browsers to use the ICAP device as the HTTP proxy.

Using ICAP devices can enhance performance in two ways:

- **Caching good data**—If the data is clean, the ICAP device caches the data. Subsequent requests require only four steps, not eight. (ICAP must still ask IWSVA to check the policies to validate that the users making the subsequent requests can browse the data, have not exceeded their quota, and so on.)
- **Clustered IWSVA servers**—When multiple IWSVA servers are used, the ICAP device load balances the requests between the servers. This is vital for enterprise environments where the demand for scanning incoming pages can overwhelm a single IWSVA server. With ICAP, the ICAP device performs load balancing, and receives maximum performance from the available IWSVA servers.

Note: Non-ICAP environments can receive similar benefits by using multiple IWSVA servers. However, the administrator must utilize additional load balancing technology.

When IWSVA is configured in ICAP mode, it processes requests from any ICAP-compliant client. Trend Micro supports the following ICAP client implementations:

- NetCache
- Blue Coat
- Cisco Content Engines
- Squid

Although IWSVA performs the same filtering of URLs and scanning of data for unwanted content, the ICAP flow is so different from the other flows that it requires a completely different communications protocol. Administrators indicate which protocol (ICAP or non-ICAP) to use during post-installation configuration.

The figures that follow show the HTTP flow with single and multiple IWSVA servers. (Both images assume the requested data is not in the ICAP device's cache.) The ICAP service determines which IWSVA server receives the request in a multi-server environment.

IWSVA configured in ICAP Mode processes Web page requests in the following sequence:

1. An HTTP client makes a request for a URL, sending the request to the ICAP caching proxy device.
2. The ICAP device, based on its configuration, determines that the request must be forwarded to an IWSVA server. If multiple servers are available, it alternates in round-robin fashion for load balancing.
3. The IWSVA server validates the URL.
 - If the URL is not blocked, IWSVA sends the response to the ICAP device.
 - If the URL is invalid (blocked), IWSVA directs the ICAP device to send an appropriate response to the HTTP client and the transaction is complete.
4. If the URL is valid, the ICAP server requests the page from the Web site on the Internet.
5. The Web site on the Internet returns the requested page (or some other appropriate response).
6. If the page is returned, the ICAP device, based on its configuration, determines that an IWSVA server must scan the data. Again, if multiple servers are available, it alternates in round-robin fashion for load balancing.
7. The IWSVA server scans the results and returns an appropriate response to the ICAP device, based on whether the data is clean or contains unwanted content.
8. If the data is clean, the ICAP device returns said data to the HTTP client, and the ICAP device retains a copy of the data to satisfy future requests. If the data contains unwanted content, the ICAP device returns an appropriate error message (dictated

by IWSVA) to the HTTP client, and the ICAP device does not retain a copy for future requests.

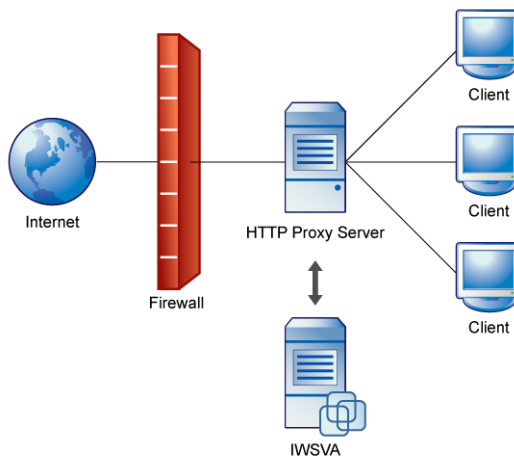


FIGURE 2-12. HTTP Proxy in ICAP Mode (Single IWSVA Server)

IWSVA ICAP Mode with Multiple Servers

If there is already a content cache server on your network, then Trend Micro recommends installing the ICAP HTTP handler. The following diagram shows the installation topology for IWSVA ICAP with multiple servers. For multiple IWSVA ICAP servers to work properly, their corresponding pattern, scan engine version, and `intscan.ini` files must be identical.

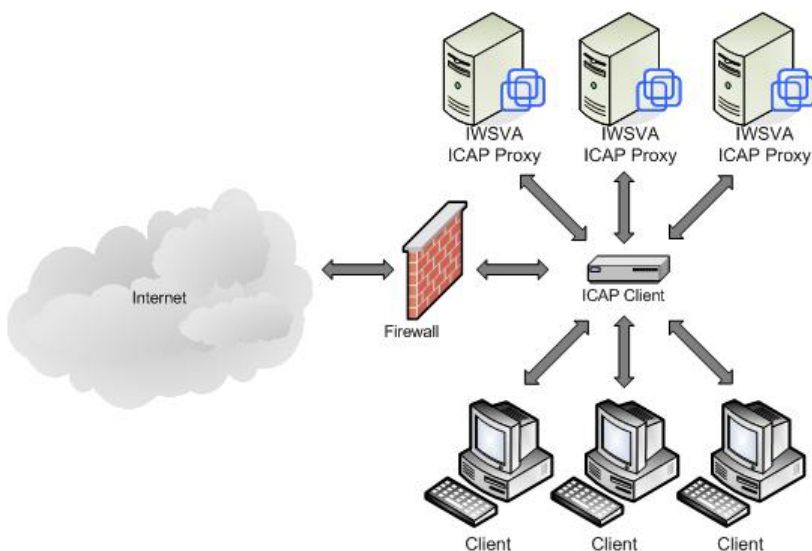


FIGURE 2-13. HTTP Proxy in ICAP Mode (Multiple IWSVA Servers)

TABLE 2-8. HTTP Proxy in ICAP Mode

ADVANTAGES	LIMITATIONS
No configuration changes required on the clients.	Configuration changes on IWSVA affects cached objects.
Cached objects are downloaded by clients directly from the Proxy server, which minimizes delays, and improves performance.	
Load-balancing is possible after some configuration to the clients.	

Deploying in Reverse Proxy Mode

Overview of Reverse Proxy Mode

IWSVA is usually installed close to clients to protect them from security risks from the Internet. However, IWSVA also supports being installed as a reverse proxy to protect a Web server from having malicious programs uploaded to it. In Reverse Proxy Mode, IWSVA is installed close to the Web server that it protects. In this mode, IWSVA protects a Web server with the proxy server. The HTTP proxy is placed between the Internet and the Web server. This is useful when the Web server accepts file uploads from clients, or to reduce the load of each Web server by balancing the load among multiple Web servers. ASPs/ISPs can use IWSVA as an HTTP proxy to protect the upload traffic against viruses, and organizations with complex Web sites need it as a centralized point of access control.

IWSVA receives clients requests, scans all content and then redirects the HTTP requests to the real Web server. This flow is especially useful for Web sites involved in e-commerce transactions, distributed applications that exchange data across the Internet, or other situations where clients upload files to the Web server from remote locations.

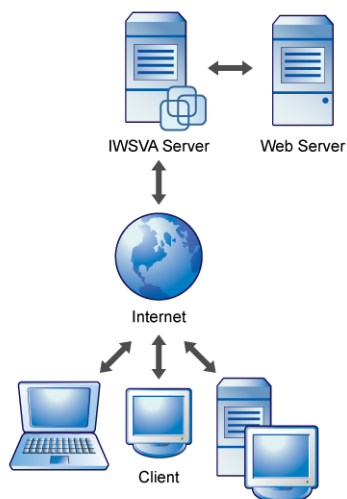


FIGURE 2-14. Reverse proxy protects Web server from clients

Planning the HTTP Flow Using Reverse Proxy Mode

For complete details on implementing the Reverse Proxy Mode, see [Reverse Proxy Mode on page 1-10](#).

HTTP Reverse Proxy in Dependent Mode

In reverse proxy mode, the HTTP proxy acts as the Web server to the client systems. The proxy receives all requests and transfers them to the real Web server. Consequently, all HTTP traffic goes through the HTTP proxy, enabling the proxy to scan the content and block any infected transactions.

-
- Note:** Administrators should be aware of the following:
- The URL-filtering feature makes no sense in this configuration; only antivirus scanning and URL-blocking are useful.
 - In the reverse proxy mode, the Web server's access log is useless. To analyze the connections for the Web site, you must use the IWSVA access log.
 - Ideally, the reverse proxy server should be placed behind a firewall, but in many cases, the proxy is connected directly to the Internet, where it is more vulnerable to direct attacks. When a reverse proxy is configured without a firewall, administrators should take all appropriate precautions in securing the operating system hosting IWSVA.
-

IWSVA configured in Reverse Proxy Mode processes Web page requests in the following sequence:

1. Clients initiate the Web request.
2. The request is received by Trend Micro™ InterScan™ Web Security Virtual Appliance, and configured to listen on port 80.
3. Trend Micro™ InterScan™ Web Security Virtual Appliance scans the content, then forwards it to an actual Web server.
4. The Web server delivers the requested page back to IWSVA.
5. Trend Micro™ InterScan™ Web Security Virtual Appliance rewrites the page headers, and sends on the request.

6. The modified page returns to the requestor.

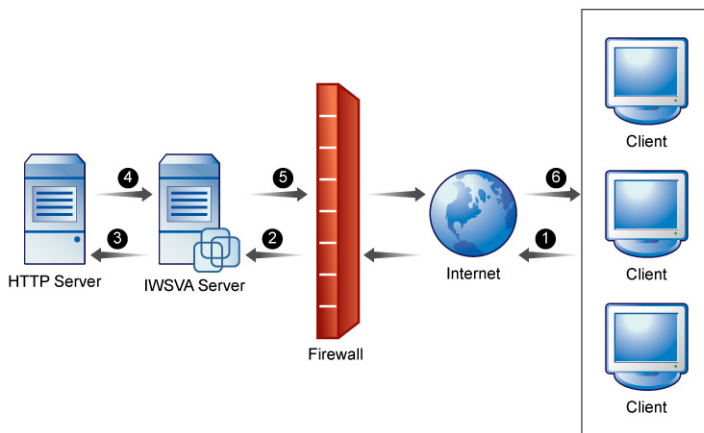


FIGURE 2-15. HTTP Reverse Proxy in Dependent Mode

TABLE 2-9. More About HTTP Reverse Proxy in Dependent Mode

ADVANTAGES	LIMITATIONS
IWSVA scans all objects before they are cached.	New engines, patterns, and configurations will not affect cached objects.
	The access logging feature of IWSVA is compromised.

Deploying in Transparent Bridge Mode

Overview of Transparent Bridge Mode

In the Transparent Bridge Mode, IWSVA acts as a bridge between two network devices (switch, router, or firewall) and transparently scans HTTP/HTTPS and FTP traffic. Transparent Bridge Mode is the simplest way to deploy IWSVA into an existing network topology and does not require modifications to clients, routers, or switches. IWSVA acts as a “bump in the wire” and scans for malware. Two network cards are required for IWSVA to be configured in Transparent Bridge Mode.

The benefit of the Transparent Bridge Mode is that client’s HTTP/HTTPS requests can be processed and scanned by IWSVA without any client configuration changes. This is more convenient for your end users, and prevents clients from exempting themselves from security policies by simply changing their Internet connection settings.

Another important benefit of this deployment mode is that IWSVA sees all traffic across all ports. This enables utilization of the Application Control feature of IWSVA to monitor and control not only HTTP/HTTPS and FTP, but over 420 other applications and protocols.

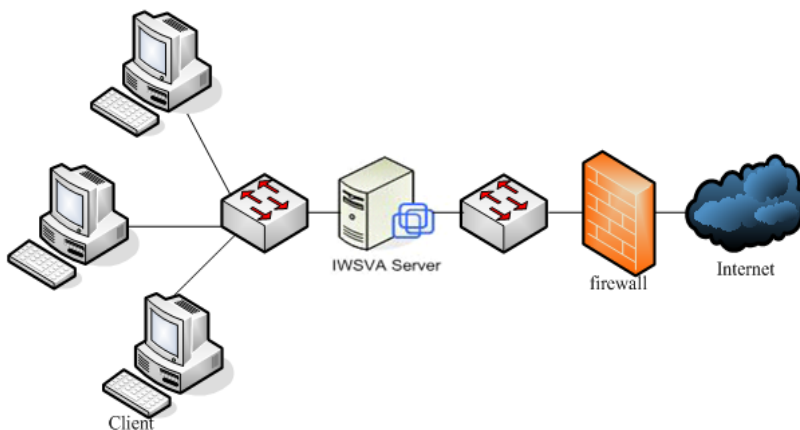


FIGURE 2-16. Typical bridge mode deployment

Note: Silicom bypass cards are recognized by VMware ESXi 5.0, but they can only be used as NORMAL network cards without the bypass function.

Planning the HTTP Flow Using Transparent Bridge Mode

For complete details on implementing the Forward Proxy Mode, see [Transparent Bridge Mode on page 1-9](#).

IWSVA configured in Transparent Bridge Mode processes Web page requests in the following sequence:

1. The Web client sends a request to the Web server.
2. IWSVA accepts the connection from client and sends the request to the Web server.
3. IWSVA establishes a connection with the Web client.
4. IWSVA establishes the connection with the Web server and gets data from the Web server.
5. If the data contains no viruses, then IWSVA sends the data to the Web client.
6. If the data contains a virus, then IWSVA sends the blocked page to the Web client.

High Availability Deployment Mode

IWSVA 6.5 Transparent Bridge mode supports deployment in High Availability (HA) mode where two IWSVA 6.5 nodes are configured as an HA cluster. In this configuration one of the nodes is designated as the parent, or active node, and is connected to a child, or passive node, through a “heartbeat” link.

For HA mode deployments, it is recommended to perform a bare metal installation of each IWSVA 6.5 HA cluster member. This avoids the situation where both HA cluster members are installed in a virtual server and the virtual server becomes inoperable. In this situation, both members of the HA cluster will also become inoperable.

Note: The HA deployment mode is only supported in Transparent Bridge mode. High Availability among multiple IWSVAs deployed in the other supported deployment modes is handled externally to the IWSVA instance. Specifically, load balancers support redundancy in any of the proxy modes. The Cisco WCCP device can manage traffic to redundant IWSVAs in WCCP mode. The ICAP proxy client can manage traffic to redundant IWSVAs in ICAP mode.

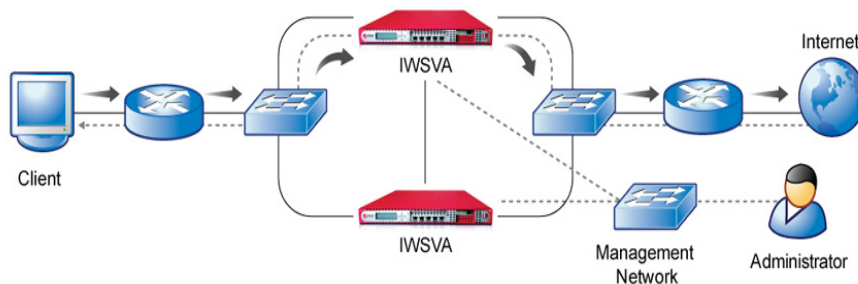


FIGURE 2-17. High Availability Deployment Mode

HA Deployment Mode Installation Guidelines

When IWSVA is initially installed, a static IP address is assigned to the selected network interface on each of the IWSVA units participating in the HA cluster.

To successfully configure the HA feature, you will need to know which network card (eth0, eth1, and so on) was assigned the IP address during the installation process and how the network interfaces are configured on the server. IWSVA provides a CLI command to simplify the gathering of this information and by executing this CLI command after the initial installation of IWSVA, you can gather and record the necessary information to complete the installation with the Web console.

After the CLI command is used to gather the necessary information, you can connect to the Web console through your browser. For new installations, the Deployment Wizard will automatically start and guide you through the deployment modes.

To avoid creating a network loop, be sure to configure each of the IWSVA units as a Forward Proxy device first. Once all of the network information is configured, the deployment wizard can be used to create the HA cluster.

WARNING! If you accidentally configure both IWSVA devices as parent or active devices in transparent bridge mode, a network loop can be created. To avoid this possibility, please configure each IWSVA as a forward proxy device before configuring the HA feature.

To configure an IWSVA HA cluster:

1. Install two IWSVA devices in forward proxy mode. One will become the parent active device and the other will become the child passive device.
2. Because IWSVA devices can be installed on generic server hardware, you will need to confirm the network card and network information prior to setting up the HA cluster. Gather the network card information that will be used in the Web UI configuration steps to finalize the HA cluster configuration. This is performed by logging into the IWSVA's CLI console and executing the following CLI command:
show network interface status
3. Make sure both IWSVA devices are connected to the network using the active network card identified in the previous step. Both IWSVA units must be able to communicate with each other and the management host that will be used to configure the HA cluster.
4. From your management host, use the browser to connect to the IWSVA device that is to act as the parent or active member. If this is the first time you've accessed the IWSVA's Web console after the initial installation, the Deployment Wizard will start automatically. You can also access it from the **Administration > Deployment Wizard** menu option.
5. Follow the on-screen instructions in the Deployment Wizard to configure the first HA cluster member. This will be the parent or active unit.
6. Repeat steps 4 and 5 for the IWSVA device that will be the child member. The child member will join the parent member to complete the HA cluster.

Please refer to Chapter 3, *High Availability and Cluster Management* in the IWSVA Administrator's Guide for details about creating HA clusters.



Installing InterScan Web Security Virtual Appliance

This chapter explains the following:

- *Obtaining IWSVA on page 3-2*
- *Installing IWSVA on page 3-4*
- *Logging in to IWSVA for the First Time on page 3-11*
- *Post-Installation Notes on page 3-11*

Obtaining IWSVA

IWSVA is supported on the following platforms:

- Bare Metal installation (dedicated off-the-shelf server platform without an operating system). Refer to the list of current certified hardware platforms to ensure your preferred server platform is supported by IWSVA. This list can be found at the following location:

http://us.trendmicro.com/imperia/md/content/us/pdf/partners/certifiedbytrendmicro/trendtested_hw_matrix_mar2011.pdf

- VMware ESX 4.0/4.1 or ESXi 4.0/4.1 as a virtual machine
- Microsoft Hyper-V 2.0 installed as a virtual server on Windows Server 2008 R2 or later version

For information regarding server requirements for IWSVA, refer to *Server Requirements on page 1-2*.

Trend Micro recommends that you evaluate the method of installation that best suits your environment.

You can install IWSVA from the Trend Micro Enterprise Solutions DVD or download the installation ISO from the Trend Micro IWSVA download location:

<http://downloadcenter.trendmicro.com/>

The DVD is available to purchase and contains the installation files and all documentation.

Using the Trend Micro Enterprise Solutions DVD

To complete this installation, you need to create a bootable installation DVD that contains the IWSVA ISO file.

Procedure:

1. To create the installation media, insert the Trend Micro Enterprise Solution disk into the DVD drive on the computer where ISO images can be created.
2. Copy the IWSVA ISO image from the Trend Micro Enterprise Solutions Media onto the local hard drive.

3. Eject the Enterprise Solutions DVD and place a blank DVD disk into the DVD writer.
4. Burn the IWSVA ISO image to the blank DVD.
5. Insert the newly created IWSVA Installation DVD into the target server where you would like to install IWSVA.
6. Reboot the server and boot from the IWSVA installation DVD to begin the installation process.

Note: The file on the Enterprise DVD and on the Trend Micro Evaluation site is an ISO image. The ISO image allows you to create an IWSVA installation DVD to install the product.

Downloading the Installation File

Procedure:

1. Go to the Trend Micro download Web page:
<http://downloadcenter.trendmicro.com/>
2. Download the IWSVA ISO file.
3. Burn the IWSVA ISO image to the blank DVD.
4. Insert the newly created IWSVA Installation DVD into the target server where you would like to install the IWSVA application.

WARNING! IWSVA does not support installation using an external USB DVD drive.

5. Reboot the server and boot from the IWSVA installation DVD to begin the installation process.

Note: The ISO image needs to be copied and then burned onto a blank DVD in order to create the IWSVA installation DVD (See the DVD ISO creation document, *How to Use the Trend Micro IWSVA ISO File*.)

Installing IWSVA

IWSVA only supports new installations or migrations from specific versions.

IWSVA supports migrating existing configuration and policy data from IWSVA 5.6, and IWSVA 6.0, IWSVA 6.0 SP1, IWSVA 6.5 products (see [Migration on page 1-6](#)).

The IWSVA installation process formats your existing system to install IWSVA. The installation procedure is basically the same for the Bare Metal and the VMware ESX Hyper-V virtual machine platforms. The Bare Metal installation simply boots off of the IWSVA installation DVD to begin the procedure. The VMware and Hyper-V installations require the creation of a virtual machine before installation. Additional VMware virtual machine configuration is described in Appendix E, [Creating a New Virtual Machine Under VMware ESX for IWSVA on page E-1](#). Additional Hyper-V virtual machine configuration is described in Appendix F, [Creating a New Virtual Machine Under Microsoft Hyper-V for IWSVA on page F-1](#).

WARNING! Any existing data or partitions are removed during the installation process. Backup any existing data on the system (if any) before installing IWSVA.

IWSVA also installs a copy of the open source content caching application called *Squid*. It is disabled by default but you can enable this free open-source utility through the IWSVA administration Web UI. Trend Micro provides Squid content caching for convenient and easy installation. Support for Squid is provided by the Squid open-source community.

Trend Micro Disclaimer: Trend Micro IWSVA preinstalls Squid and provides the basic configuration and statistical reports to help reduce the complexity of installing and configuring Squid to function with IWSVA. Squid is disabled by default and must be enabled by the customer through the IWSVA administration user interface after installation has been completed. Support for Squid is obtained through open source channels and it is the responsibility of the customer to become acquainted with Squid's benefits and functionality before enabling.

Additional information, documentation, and support on the Squid application can be found at the official Squid Web Proxy

Cache Web site: www.squid-cache.org. Trend Micro will not provide support for Squid's features, but will provide support for the setup and integration of Squid and IWSVA through its supplied configuration commands.

To install IWSVA:

1. Start the IWSVA installation.

Installing on a Microsoft Hyper-V Virtual Machine

- a. Create a virtual machine on your Microsoft Hyper-V server.
See Appendix F, *Creating a New Virtual Machine Under Microsoft Hyper-V for IWSVA* on page F-1.
- b. Refer to Post Installation Notes to access the IWSVA Web console and continue IWSVA configuration.

Installing on a Bare Metal Server

Insert the IWSVA Installation DVD (which was created from the IWSVA ISO image) into the DVD drive of the desired server.

Note: Because IWSVA does not support external USB CD/DVD drives, a “Cannot find kickstart file on DVD-ROM” warning message displays when installing IWSVA. You can safely ignore this warning message.

Installing on a VMware ESX Virtual Machine

- a. Create a virtual machine on your VMware ESX server.
See Appendix E, *Creating a New Virtual Machine Under VMware ESX for IWSVA* on page E-1.
- b. Power on the virtual machine that was created to boot from the IWSVA installation ISO.

Note: If your computer boots from an ISO image (such as ISOLINUX), you need to press [ENTER] at the bootloader prompt to continue with the IWSVA installation process.

Installation Steps for both a VMware ESX Virtual Machine and a Bare Metal Server

Note: IWSVA does not need a network connection during installation, but it must connect with the Internet when using the Deployment Wizard after the installation completes.

A page appears displaying the IWSVA Installation Menu. The options on this menu are as follows:

- **Install IWSVA:** Select this option to install IWSVA onto the new hardware or virtual machine.
- **System Recovery:** Select this option to recover an IWSVA system in the event that the administrative passwords cannot be recovered.
- **Exit Installation:** Select this option to exit the installation process and to boot from the local disk.

2. Select **Install IWSVA**.

The license acceptance page appears.

3. Click **Accept** to continue.

A page appears where you choose a keyboard language.

4. Select the keyboard language for the system and then click **Next**.

5. Select the driver(s) used for installation and then click **Next**.

The IWSVA installer scans your hardware to determine if the minimum specifications have been met and then displays the results illustrated as follows. If the host hardware contains any components that do not meet the minimum specifications, the installation program highlights the nonconforming components and the installation stops.

6. Click **Next** to continue.

A page appears where you specify network devices, hostname, and miscellaneous settings. If you choose to set the hostname manually, the Miscellaneous Settings will be available to you.

Note: You must assign a valid hostname to the IWSVA server for it to function properly.

The IWSVA hostname must be entered into the DNS server assigned to the IWSVA and its users.

7. Select the network devices and input the corresponding IP addresses.

Note: After installing the IWSVA OS, you can access the IWSVA Web console using the NIC you select, then run the Deployment Wizard to complete the necessary configuration. Also, you can use the Deployment Wizard to change the existing network settings.

TREND MICRO InterScan® Web Security Virtual Appliance

Network Devices

Choose to active Device Link Status Description

Choose to active	Device	Link Status	Description
<input checked="" type="radio"/>	eth0	up	Intel Corporation 82545EM Gigabit Ethernet Controller (Copper)

Interface Settings

IPv4 Address: * 10.204.150.20

Netmask: * 255.255.254.0

General Settings

Hostname: iwsva56

Gateway: 10.204.151.254

Primary DNS: 10.204.170.12

Secondary DNS:

Back Next

FIGURE 3-1. Page to specify network devices, hostname, and miscellaneous settings

8. Configure the network settings as required for IWSVA and then click **Next**.
9. Specify the time zone for IWSVA on the time zone page.

Use the drop-down list to display the supported time zones or point to your location using the time zone map.

10. Click **Next.**

11. Specify a password for the administrator account.

IWSVA uses three different levels of administrator types to secure the system: Root account, Enable account, and Admin account. For convenience, the passwords for these three accounts are set the same in this step. You can change each password separately after installation.

Root Account: The Root account is used to gain access to the operating system shell and has all rights to the server. This is the most powerful account on the system.

Enable Account: The Enable account is used to gain access to the command line interface's (CLI) privilege mode. It has all rights to execute CLI commands.

Admin Account: The Admin account is the default administration account used in the IWSVA Web console and CLI management interface. It has all rights to the IWSVA application, but no access rights to the operating system shell. The default username is "admin".

As you type the passwords, the password strength meter on the right indicates how strong the selected password is. For the best security, Trend Micro recommends using a strong, unique password.

12. Click **Next.**

A page appears where you accept all the configuration settings.

13. Confirm that the selected values are correct and then click **Next.**

The installation process prompts you to begin the installation. Selecting **Continue** erases any data on the hard disk partition and formats the hard disk. If you have data on the hard disks that you would like to keep, cancel the installation and backup the information before proceeding.

14. Click **Continue.**

A page appears that provides the formatting status of the local drive for the IWSVA installation. When formatting completes, the IWSVA installation begins.

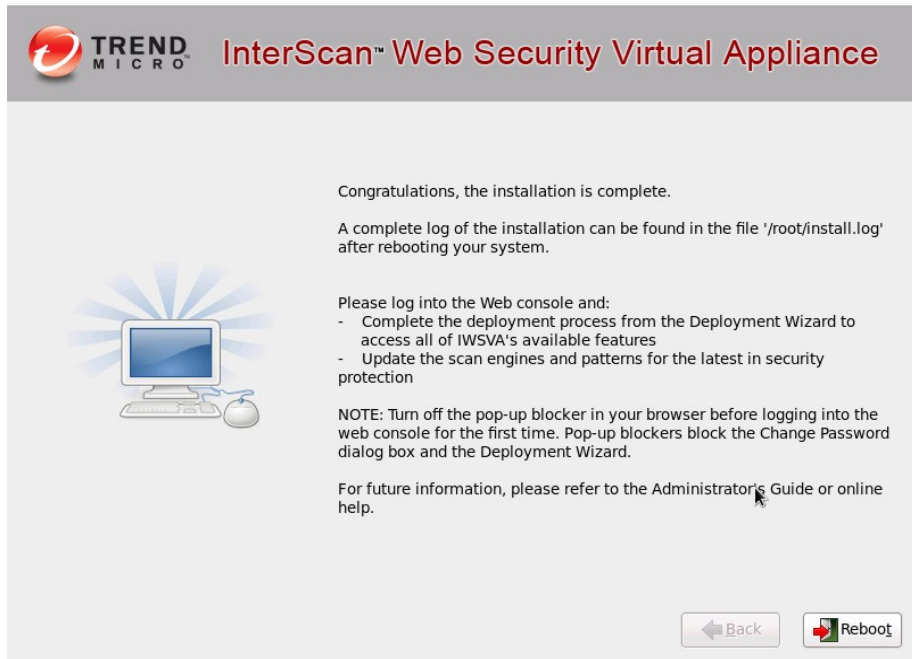


FIGURE 3-2. Summary screen contains default password.

After the installation is complete a summary screen appears. The installation log is saved in the `/root/install.log` file for reference.

15. Click **Reboot to restart the system.**

- **For a bare metal installation:** The DVD automatically ejects. Remove the DVD from the drive to prevent reinstallation.
- **For a virtual machine installation:** Trend Micro recommends disconnecting the DVD-ROM device from the virtual machine now that IWSVA is installed.

After IWSVA reboots, the initial CLI log in screen appears. (See [Figure 3-3](#).)

```
Trend Micro IWSVA - InterScan Web Security Virtual Appliance

To manage the IWSVA software appliance through its Web interface, open a
browser window and enter the following URL:

    http://10.2.203.100:1812

You will be prompted for your administrator account and password.
Please have your administrator account and password ready for authentication.

To manage the IWSVA appliance through the Command Line (CLI) Shell, please
login using the Login prompt below.

localhost login: _
```

FIGURE 3-3. The initial CLI log in screen

Note: During installation, you might receive the following messages:

```
for crash kernel (0x0 to 0x0) not within permissible range
powernow-k8: bios error -no psb or acpi_pss objects
```

Both of these messages are normal. The latter message indicates that the system BIOS is not reporting or presenting any PSB or ACPI objects or hooks to the Linux kernel. Either the CPU or BIOS does not support PSB or ACPI objects or hooks or they are simply disabled.

-
16. Prepare to log into the IWSVA Web console by disabling the pop-up blocker in your browser.

Note: Pop-up blockers block the Change Password dialog box and the Deployment Wizard which are launched during the first-time login.

17. Log in to the IWSVA Web console to launch IWSVA.
See [Logging in to IWSVA for the First Time on page 3-11](#) for details.

Logging in to IWSVA for the First Time

After IWSVA has restarted, you can log in to the appliance either through the CLI or the Web management interface.

- For the CLI interface, type in your administrator username and password at the console login prompt.

Note: Turn off the pop-up blocker in your browser before logging into the Web console for the first time. Pop-up blockers block the Change Password dialog box and the Deployment Wizard.

- For the Web management interface, on your workstation (not IWSVA) open a new Web browser and then type in the URL (`http://<IWSVA6.5IP address>:1812`) indicated in the initial CLI banner. You will need the IWSVA administrator account and password to log in. The administrator account name is “admin” and the password is set by the user during installation.

Post-Installation Notes

After the initial CLI is available:

- The Deployment Wizard launches when you first log into the Web console. Use the Deployment Wizard to complete your installation. (See the Administrator’s Guide, Chapter 2.)
- Trend Micro recommends that you update your scan engine and virus pattern files immediately after registering and activating the product. (See the Administrator’s Guide, Chapter 3.)



Chapter 4

Migrating to InterScan Web Security Virtual Appliance

This chapter describes the following:

- *About Migration on page 4-2*
- *Information Not Migrated on page 4-3*
- *Migrating from IWSVA 5.6, 6.0, 6.0 SP1 to IWSVA 6.5 on page 4-5*
- *Migrating from IWSVA 6.5 to Another IWSVA 6.5 on page 4-6*
- *After Migrating on page 4-7*

About Migration

InterScan Web Security Virtual Appliance (IWSVA) 6.5 supports both full and partial migration. Use full migration to restore the system and application settings or to apply current configuration to an IWSVA replacement machine. Perform a partial migration if you want to replace policy and application level configurations.

WARNING! IWSVA 6.5 does not support migration from another language version of IWSVA 6.0 SP1, IWSVA 6.0, IWSVA 5.6, IWSVA 5.5, IWSVA 5.1 SP1, IWSVA 5.1, IWSVA 5.0, IWSVA 3.1, or IWSS 3.1 Linux/Windows

Before you perform a full migration, make sure the hardware configuration and deployment mode are the same on both the source and target IWSVA 6.5 machines.

Trend Micro recommends that you configure the target IWSVA 6.5 machine to use the same IP address as in the backup configuration file (exported from the source IWSVA 6.5 machine) to prevent unexpected behavior after a full migration.

Do NOT connect both IWSVA 6.5 machines to the network simultaneously. Only one IWSVA 6.5 machine should be connected at a time.

The configuration and policy information for the following IWSVA products can be migrated to IWSVA:

- IWSVA 5.6
- IWSVA 6.0
- IWSVA 6.0 SP1
- IWSVA 6.5

Important Notes

- You can export IWSVA configuration to a backup file. Export information includes both system level and application level configuration settings.
- Use the **Config Backup & Restore** page in the Web console to import the backup file containing the IWSVA 6.5 configuration. A screen displays to prompt you to select either full migration or partial migration.

- Password information in a configuration backup file will not be displayed in clear text.
- IWSVA records a configuration import or export action in the audit log.

Information Not Migrated

The following lists the items that are not migrated.

Full Migration

- Logs stored in databases, reports, messages, and quarantined files
- Pattern and engine files and related version information located in configuration files
- Database passwords
- Product activation code
- OS and application patches

Partial Migration

- Logs stored in databases, reports, messages, and quarantined files
- Pattern and engine files and related version information located in configuration files
- Database passwords and configurations
- Product activation code
- Deployment mode configurations
- All configuration settings under the Administration menu in the Web console except user identification.
- The following settings from IWSVA 5.6:
 - Schedule reports
 - Log and report paths
- (For partial IWSVA 6.5 to IWSVA 6.5 migration) System level settings such as IP address, hostname, and so on
- OS and application patches

Overview of the Migration Process

This procedure lists the major steps for both full and partial migration.

Procedure:

1. Back up previous IWSx settings.
2. Install IWSVA 6.5.
3. Import the previously backed up configuration file to the new IWSVA machine. If you are migrating from a source IWSVA to a target IWSVA 6.5, and both devices are configured in standalone mode, you can choose to perform a full or partial migration. Otherwise, by default, only a partial migration is performed.
4. You can access the Web console to configure new IWSVA 6.5 features.

Note: After the migration process completes, the default settings imported for IWSVA 6.5 features will apply.

For a list of settings that are not migrated, refer to [Information Not Migrated on page 4-3](#).

Migrating from IWSVA 5.6, 6.0, 6.0 SP1 to IWSVA 6.5

Note: IWSVA 6.5 only supports partial migration if you want to restore back to a previous backup IWSVA 5.6, 6.0, 6.0 SP1 configuration.

IWSVA 6.5 does not support migration from another language version.

Procedure:

1. Open the Web console of the source IWSVA; then, select **Administration > Configuration Backup & Restore**, and then click **Export**.
The screen displays a progress bar. When the export process is finished, a result page displays the status. If configuration export is successful, IWSVA opens a dialog box to prompt you to save the configuration file to a local disk. Save the file to a local drive on your computer.
2. Open the Web console of the target IWSVA 6.5 machine and then select **Administration > Configuration Backup & Restore** from the main menu.
3. Click **Browse** to select a backup file and then click **Import**.

Migrating from IWSVA 6.5 to Another IWSVA 6.5

Note: IWSVA 6.5 does not support migration from another language version of IWSVA 6.5.

A full migration from one IWSVA 6.5 device to another IWSVA 6.5 device is only supported if both devices are configured in standalone mode.

To perform a full migration, make sure the hardware configuration and deployment mode are the same on both IWSVA machines. Trend Micro also recommends you configure both machines to use the same IP address to prevent unexpected behavior after a full migration.

If the IP address information in the backup file is different from the IP address of the IWSVA machine to which you want to import the file, the migration results screen will not display. In this case, you can view the migration results in the Audit Log screen.

After a full migration, if the separate management interface is enabled on the source IWSVA machine, you must use the management IP address of the source IWSVA machine to access the Web console on the target IWSVA 6.5 machine.

Procedure:

1. Open the Web console of the source IWSVA 6.5 machine and select **Administration > Config Backup/Restore**. Then, click **Export** to back up the configuration.

The screen displays a progress bar. When the export process is finished, a result page displays the status. If the configuration export process is successful, IWSVA opens a dialog box to prompt you to save the configuration file to a local disk. Save the file to a local drive on your computer.

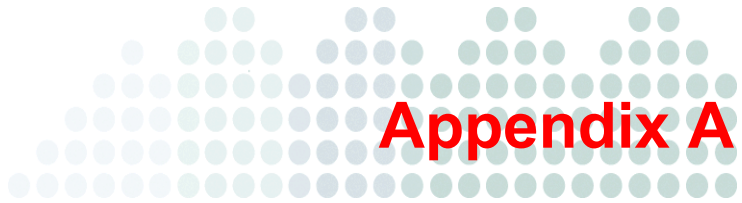
2. Open the Web console of the target IWSVA 6.5 machine and then click **Administration > Config Backup/Restore** from the main menu.
3. Click **Browse** to select a backup file and then click **Import**.

Note: If you are migrating from a source IWSVA 6.5 to a target IWSVA 6.5, and both devices are configured in standalone mode, you can choose to perform a full or partial migration. Otherwise, by default, only a partial migration is performed.

4. Choose an option and click **OK** to continue.

After Migrating

Existing customers can check the “What’s New” section in the first chapter of the *IWSVA Administrator’s Guide* to see the new features are available in this release. New customers can see all of the other IWSVA features listed after the “What’s New” section.



Appendix A

Deployment Integration

This appendix describes the following:

- *IWSVA in a Distributed Environment on page A-2*
- *Integration with LDAP on page A-4*
- *Integration with a Cisco Router using WCCP on page A-7*
- *Protecting an HTTP or FTP Server using Reverse Proxy on page A-8*
- *Integration with an ICAP Device on page A-9*

IWSVA in a Distributed Environment

InterScan Web Security Virtual Appliance (IWSVA) is designed to be part of a distributed system and can establish a number of network connections based on the configuration settings.

The administrator must ensure the following:

- None of the required channels are blocked
- All channels have enough throughput
- Servers use a supported version of the software
- Servers are able to handle heavy traffic load

Connection Requirements and Properties

Table A-1 provides the required connections and their properties.

TABLE A-1. Required Connections and Properties

CONNECTING COMPONENT	TRAFFIC: TYPE AND VOLUME	IF THE CONNECTION IS LOST
Clients	Should be measured on the real network.	No protection
Database server	Type: TCP Volume: Medium	Cached data is used for already started services. Services will not start.
LDAP server (if configured)	Type: LDAP Volume: Medium	Cached data is used for already started services. Services will not start.
Trend Micro Active Update Server	Type: HTTP and HTTPS Volume: 10-50 Mb/day	IWSVA components cannot be updated in time.

TABLE A-1. Required Connections and Properties (Continued)

CONNECTING COMPONENT	TRAFFIC: TYPE AND VOLUME	IF THE CONNECTION IS LOST
Web Reputation	<p>Type: HTTP</p> <p>Volume: Depends on the specific access</p>	<p>Cached data is used for already started services.</p> <p>Service will not start and user is given access to requested URL.</p>

Throughput and Availability Requirements

The administrator must determine the IWSVA availability requirements.

- Is IWSVA downtime acceptable?
- If so, what is the proper action (bypass or stop) to enforce when IWSVA is down?
- If a failover configuration with multiple IWSVA instances is used, do the LDAP and database servers have the same level of failover?

Integration with LDAP

Support Multiple Domains for Multiple LDAP Servers

IWSVA has an LDAP module that allows communication with multiple LDAP servers with the ability to establish multidomain trees and forest-like environments.

IWSVA LDAP integration supports multiple domains and multiple LDAP servers.

To configure the LDAP function at the IWSVA Web console:

1. Go to **Administration > IWSVA Configuration > User Identification > User Identification**
2. Input the necessary information for the LDAP connection
3. Click **Test Connection** to verify the LDAP configuration and connectivity. A success message will appear if the test is successful.
4. Click the **Save** to save the configuration.

Note: Before configuring LDAP, make sure the LDAP domain name is resolvable by the IWSVA DNS.

Two authentication methods are provided for user authentication. Standard authentication will provide a standard 401 or 407 authentication dialog box to specify the user account and password. If the client machine is a Windows desktop in the Microsoft Active Directory domain, transparent authentication will be applied. Captive Portal will show a Web-based authentication page for user identification. Guest policy is applicable with Captive Portal authentication. Cookie mode is added in IWSVA 6.5 to address user identification in NAT and terminal server environment which is only available in Captive Portal.

The Windows Active Directory (AD) Global Catalog enables LDAP clients, such as IWSVA, to query objects native to the domain being queried, and those residing in remote domains, as long as the AD server being queried and the remote AD server has Global Catalog enabled. The Global Catalog server accepts the LDAP requests on port 3268 and allows querying the user credentials, full name and membership in the global and universal groups across all other domains in the forest. The use of the Global

Catalog is handy when creating IWSVA LDAP policies for a parent group with user(s)/group(s) member(s) residing on remote domains that are part of many subdomain levels.

To use this feature, the IWSVA administrator should configure the main LDAP server that IWSVA uses from the Web console **Administrator > Configuration > User Identification** page to communicate with a designated Global Catalog-enabled Active Directory server using port 3268, instead of using the default LDAP communication port 389.

Note: Global Catalog is only available in Microsoft Active Directory. The advantage of using the Global Catalog port includes better performance for LDAP object lookup, and allows object lookup that resides in many sublevels of the Active Directory tree (beyond three). However, in order for IWSVA to utilize the Global Catalog, the AD being requested for an object needs to have the Global Catalog enabled along with the AD where the queried user or group objects reside. IWSVA supports the use of the Global Catalog port only to be configured as the main LDAP server, and not part of the IWSVA referral chasing servers.

Tip: Trend Micro recommends allowing IWSVA to query the root Active Directory server with the Global Catalog enabled, and using Universal group types to do group nesting when applying policies. This can be seen by the Global Catalog and will be visible throughout the Active Directory. For more information, see Microsoft support (<http://support.microsoft.com/kb/231273>).

LDAP Authentication in Transparent Mode

Before configuring LDAP authentication on IWSVA deployed in transparent mode (bridge and WCCP), review the following criteria to ensure each item is fully met.

- IWSVA must have a valid hostname assigned at **Administration > Deployment Wizard > Network Interface** page in the Web console. Make sure the hostname is also entered in the corporate DNS server.
- Ensure that the user ID cache is enabled. By default, this is enabled. If it has been disabled for any reason, it must re-enabled before enabling transparent mode authentication. You can enable user ID cache using the `configure module ldap ipuser_cache enable` command in the CLI.
- By default, IWSVA keeps user ID cache information for up to two hours. If you need to lower the cache timeout value, use the `configure module ldap ipuser_cache interval` command in the CLI to set a shorter cache interval.
- If authentication is enabled, IWSVA will block all nonbrowser applications trying to access the Internet. For example, the MSN application might try to access the Internet before the user has a chance to log in to the IWSVA server. If this happens, the application will be blocked as the user has not successfully authenticated to IWSVA. You can perform one of the following:
 - a. Bypass LDAP authentication for the application by adding the URLs that application accesses to “Global Trusted URLs.” The URLs in this list will bypass both authentication and content scanning.
 - b. Instruct users to open their Web browsers and get authenticated before starting up applications that need Internet access.
 - c. Add the IP address of the client machine to “LDAP authentication White List.” IP address in this list will bypass LDAP authentication.
- When user or group authentication is enabled in either the forward proxy mode or the transparent mode with the Active Directory, you can take advantage of the automatic authentication feature provided in the Internet Explorer Web browser. With automatic authentication, clients already logged on to the domain network can access the local intranet without having to enter the log on information (such as the username and password); that is, no password pop-up screen displays.

Note: You must configure your IE settings to enable automatic authentication on each client computer.

By default, automatic authentication is enabled in IE 7.0, IE 8, and IE 9.

Refer to the Administrator's Guide for additional information.

Integration with a Cisco Router using WCCP

You can integrate IWSVA on a network that uses a Cisco router at the gateway without changing the browser settings of the client machines. This is achieved by utilizing Cisco's WCCP protocol.

Note: For more information on deploying in WCCP mode, see the *IWSVA 6.5 Administrator's Guide*, "Appendix F, WCCP Deployment & Troubleshooting."

Protecting an HTTP or FTP Server using Reverse Proxy

If you are protecting the HTTP server, install the HTTP scanning service in the HTTP proxy mode and use the reverse proxy configuration.

- Define the following configuration setting in the [http] section of the pni-file
 - `self_proxy=reverse`—specifies operation mode
 - `reverse_server`—specifies the IP address of the protected HTTP server
 - `reverse_server_port`—specifies the TCP port of the protected HTTP server

Note: To simplify the deployment of the reverse-proxy configuration in an HTTP/HTTPS environment, IWSVA can listen for the incoming (HTTPS) connection on a port specified by the [main] /secondaryport configuration parameter, and forward this traffic without scanning to port 443 of the protected server.

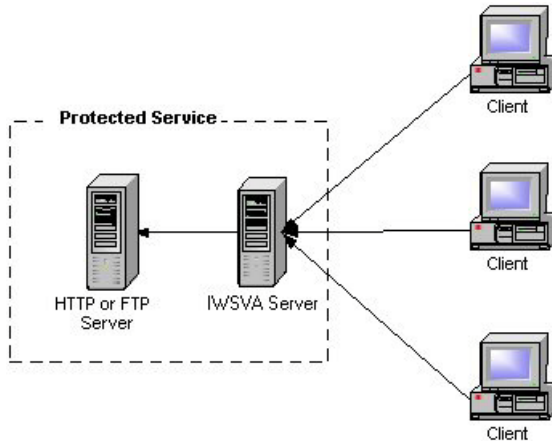


FIGURE A-1. Protecting a Dedicated Server

If you are protecting the FTP server, install the FTP scanning service and configure it to use an FTP proxy.

- Define the following configuration settings in the [ftp] section of the pni-file:
 - `proxy_mode=dedicated` specifies operational mode
 - `ftp_server` specifies the IP address of the protected FTP server
 - `ftp_server_port` specifies the TCP port of the protected server

Integration with an ICAP Device

You can integrate IWSVA on a network that utilizes an ICAP 1.0 compliant cache server.

Setting up an ICAP 1.0-compliant Cache Server

Configure an ICAP client to communicate with the ICAP server.

- *To set up ICAP for NetCache Appliance: on page A-9*
- *To set up ICAP for the Blue Coat Port 80 Security Appliance: on page A-11*
- *To set up ICAP for Cisco CE ICAP servers: on page A-15*

Setting up ICAP for NetCache Appliances

To set up ICAP for NetCache Appliance:

1. Log on to the NetCache console by opening `http://{SERVER-IP}:3132` in a browser window.
2. Click **Setup**, and then click **ICAP > ICAP 1.0** in the left menu.
3. Click **General**, and then select **Enable ICAP Version 1.0**. Click **Commit Changes**.

Note: An "icap: This service is not licensed" error message appears when you have not provided the required ICAP license key for NetCache.

4. Enter an ICAP license key:

- a. Click the **Setup** tab, and then click **System > Licenses** on the left menu. The **System Licenses** screen appears.
 - b. Type **IWFLPWA** under the **ICAP license** section.
 - c. Click **Commit Changes**.
5. Select the **Service Farms** tab on the **ICAP 1.0** screen, and then click **New Service Farm** to add ICAP servers. Then, assign the service farm name in the **Service Farm Name** field.
- For response mode, select **RESPMOD_PRECACHE** in the **Vectoring Point** field
 - For request mode, select **REQMOD_PRECACHE** in the **Vectoring Point** field
6. Select **Service Farm Enable**.
7. In the **Load Balancing** field, choose the proper algorithm that you use for load balancing (if you have more than one ICAP server in the service farm). Clear **Bypass on Failure**.

Note: Disable **Bypass on Failure** if the priority is more on virus propagation within your network. Otherwise, enable **Bypass on Failure** to guarantee an unblocked connection to the Internet.

8. Under the **Consistency** field, choose **strong** from the drop-down menu and leave the **lbw Threshold** field empty.
9. Under the **Services** text box (for response mode), type:
`icap://{ICAP-SERVER-IP}:1344/resp on,`
where **ICAP-SERVER-IP** is the IP address of IWSVA ICAP for response mode.
- Under the **Services** text box (for request mode), type
`icap://{ICAP-SERVER-IP}:1344/REQ-Service on,`
where **ICAP-SERVER-IP** is the IP address of IWSVA ICAP for request mode.
- For multiple IWSVA ICAP server services, type the additional entries in step 9. For example:
- For response mode,
- `icap://{ICAP-SERVER1-IP}:1344/resp on`
 - `icap://{ICAP-SERVER2-IP}:1344/resp on`

Click **Commit Changes**.

For request mode,

- `icap://{ICAP-SERVER1-IP}:1344/REQ-Service` on
- `icap://{ICAP-SERVER2-IP}:1344/REQ-Service` on

Click **Commit Changes**.

Note: For multiple ICAP servers within a service farm with **strong** consistency selected, make sure that all ICAP servers have identical `intscan.ini` and other configuration files and the same virus pattern. The service farm will not work properly if the ICAP servers have different configurations.

10. Click the **Access Control Lists** tab, and then select **Enable Access Control Lists**.
11. Type `icap` (Service Farm name of the ICAP Server) any in the **HTTP ACL** field.
12. Click **Commit Changes**.
To configure scanning FTP over HTTP traffic, go to **FTP > Configuration > Access Control Lists**, and then add "`icap (service farm name)`" into the **FTP ACL** field.

Setting Up ICAP for the Blue Coat Port 80 Security Appliance

To set up ICAP for the Blue Coat Port 80 Security Appliance:

1. Log on to the management console by typing `http://{SERVER-IP}:8081` in the address bar of your Web browser (specifying port 8081 as the default management port).

For example, if the IP address configured during the first-time installation is 123.123.123.12, enter the URL `http://123.123.123.12:8081` in the Web browser.
2. Select **Management**. Type the log on username and password if prompted.
3. Click **ICAP** in the left menu, and then click **ICAP Services**.
4. Click **New**. The **Add ICAP Service** screen appears.
5. In the **ICAP service name** field, type an alphanumeric name and then click **OK**.
6. Highlight the new ICAP service name and click **Edit**.

The **Edit ICAP Service name** screen appears.

7. Type or select the following information:
 - a. ICAP version number (that is, 1.0)
 - b. The service URL, which includes the virus-scanning server host name or IP address, and the ICAP port number. The default ICAP port number is 1344.
 - Response mode:
`icap://{ICAP-SERVER-IP}:1344`
 - Request mode:
`icap://{ICAP-SERVER-IP}:1344/REQ-Service`
where `ICAP-SERVER-IP` is the IP address of IWSVA ICAP.
 - c. The maximum number of connections (ranges from 1-65535). The default value is 5.
 - d. The connection timeout, which is the number of seconds the Blue Coat Port 80 Security Appliance waits for replies from the virus-scanning server. The range is an interval from 60 to 65535. The default timeout is 70 seconds.
 - e. Choose the type of method supported (response or request modes).
 - f. Use the default preview size (bytes) of zero (0).
 - g. Click **Sense settings** to retrieve settings from the ICAP server (recommended).
 - h. To register the ICAP service for health checks, click **Register** under the **Health Check Options** section.
8. Click **OK** and then click **Apply**.

Note: You can edit the configured ICAP services. To edit a server configuration again, select the service and click **Edit**. The examples used for configuring ICAP for Blue Coat are based on version 2.1.07. The settings might vary depending on the version of Blue Coat used.

9. Add a response or request mode policy.

The Visual Policy Manager requires the Java 2 Runtime Environment Standard Edition v.1.3.1 or later (also known as the Java Runtime or JRE) from Sun™ Microsystems, Inc. If you already installed JRE on your workstation, the Security

Gateway opens a separate browser window and starts the Visual Policy Manager. The first time you start the policy editor, it displays an empty policy.

If you have not installed JRE on your workstation, a security-warning window appears. Click **Yes** to continue. Follow the instructions to install the JRE.

To add the response mode policy:

- a. Select **Management**. Type the log on username and password if prompted.
- b. Click **Policy** in the left menu, and then click **Visual Policy Manager**.
- c. Click **Start**.

If the **Java Plug-in Security Warning** screen appears, click **Grant this session**.

- d. On the menu bar, click **Edit > Add Web Content Policy**.

The **Add New Policy Table** screen appears.

- e. Type the policy name under the **Select policy table name** field. Click **OK**.
- f. Under the **Action** column, right-click **Bypass ICAP Response Service** and click **Set**.

The **Add Object** screen appears.

- g. Click **New** and select **Use ICAP Response Service**.

The **Add ICAP Service Action** screen appears.

- h. Choose the ICAP service name under the **ICAP Service/Cluster Names** field. Enable **Deny the request** under the **On communication error with ICAP service** section. Click **OK**, and then click **OK** again.
- i. Click **Install Policies**.

To add the request mode policy:

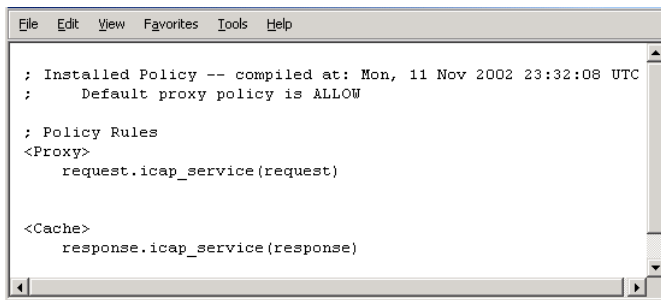
- a. Select **Management**. Type the log on username and password if prompted.
- b. Select **Policy** in the left menu, and then click the **Visual Policy Manager** tab.
- c. Click **Start**. If the **Java Plug-in Security Warning** screen appears, click **Grant this session**.
- d. On the menu bar, click **Edit > Add Web Access Policy**.

The **Add New Policy Table** screen appears.

- e. Type the policy name under the **Select policy table name** field. Click **OK**.
- f. Under the **Action** column, right-click **Deny** and click **Set**.

The **Add Object** screen appears.

- g. Click **New** and select **Use ICAP Request Service**. The **Add ICAP Service Action** screen appears.
 - h. Choose the ICAP service name under the **ICAP Service/Cluster Names** field.
 - i. Enable **Deny the request** under the **On communication error with ICAP service** section.
 - j. Click **OK**, and then click **OK** again.
 - k. Click **Install Policies**.
10. To check the current policy, go to the Policy screen, click the **Policy Files** tab, and then click **Current Policy**.



```
File Edit View Favorites Tools Help

; Installed Policy -- compiled at: Mon, 11 Nov 2002 23:32:08 UTC
; Default proxy policy is ALLOW

; Policy Rules
<Proxy>
  request.icap_service(request)

<Cache>
  response.icap_service(response)
```

FIGURE A-2. Current configured policy

Setting up ICAP for Cisco CE ICAP Servers

IWSVA supports Cisco ICAP servers (CE version 5.1.3, b15). All ICAP settings are performed through a command line interface (CLI); there is no user interface associated with the Cisco ICAP implementation.

To set up ICAP for Cisco CE ICAP servers:

1. Open the Cisco CE console.
2. Type `config` to enter the configuration mode.
3. Type `ICAP` to display a list of all ICAP-related commands.
4. Create a response modification service, by typing the following:

```
icap service RESPMOD SERVICE NAME
```

The ICAP service configuration menu opens. Display a list of all available commands. Type the following commands:

```
server icap://ICAP SERVER IP:1344/resp (to assign a server type)
vector-point respmod-precache (to assign the proper vector point type)
error-handling return-error (to assign the proper error-handling type)
enable (to enable the ICAP multiple server configuration)
```

5. Type `exit`.
6. Create a request modification service, by typing:

```
icap service REQUESTMOD SERVICE NAME
```

This command takes you into the ICAP service configuration menu. Display a list of all available commands. Issue the following commands:

```
server icap://ICAP SERVER IP:1344/REQ-Service (to assign a server type)
vector-point reqmod-precache (to assign the proper vector point type)
error-handling return-error (to assign the proper error-handling type)
enable (to enable the ICAP multiple server configuration)
```

7. Type `exit`.
8. For additional configuration steps, type the following:

```
icap append-x-headers x-client-ip (to enable X-client headers for reports)
icap append-x-headers x-server-ip (to enable X-server headers for reports)
icap rescan-cache IStag-change (to turn on ISTAG rescan for updates)
icap bypass streaming-media (to exclude streaming media from ICAP scanning)
icap apply all (to apply all settings and activate ICAP type)
show icap (to display current ICAP configuration at root CLI menu)
```

Configuring Virus-scanning Server Clusters

For the Blue Coat Port 80 Security Appliance to work with multiple virus-scanning servers, you must configure a cluster in the Security Gateway (add the cluster, and then add the relevant ICAP services to the cluster).

To configure a cluster using the management console:

1. Select **Management**.

Type the log on username and password if prompted.

2. Click **ICAP** in the left menu, and then click the **ICAP Clusters** tab.
3. Click **New**.

The **Add ICAP Cluster** screen appears.

4. In the **ICAP cluster name** field, type an alphanumeric name and then click **OK**.
5. Highlight the new ICAP cluster name and click **Edit**.

The **Edit ICAP Cluster name** screen appears.

6. Click **New** to add an ICAP service to the cluster.

The **Add ICAP Cluster Entry** screen appears. The pick list contains a list of any services available to add to the cluster.

7. Choose a service and then click **OK**.
8. Highlight the ICAP cluster entry and click **Edit**.

The **Edit ICAP Cluster Entry name** screen appears.

9. In the **ICAP cluster entry weight** field, assign a weight from 0-255.
10. Click **OK** and then **OK** again, and finally **Apply**.

Deleting a Cluster Configuration or Entry

You can delete the configuration for an entire virus-scanning server cluster, or you can delete individual entries from a cluster.

Note: Do not delete a cluster used in a Blue Coat Port 80 Security Appliance policy if a policy rule uses a cluster name.

To delete a cluster configuration using the management console:

1. Select **Management**. Type the log on username and password if prompted.
2. Click **ICAP** in the left menu, and then click the **ICAP Clusters** tab.
3. Click the cluster you want to delete.
4. Click **Delete**, and then click **OK** to confirm.

Enabling “X-Virus-ID” and “X-Infection-Found” Headers

IWSVA can return two optional headers from the ICAP server whenever a virus is found: the “X-Virus-ID” and the “X-Infection-Found” headers. Neither of these headers are returned by default for performance reasons, because many ICAP clients do not use these headers. They must be enabled in the IWSVA management console.

- “X-Virus-ID” contains one line of US-ASCII text with a name of the virus or risk encountered. For example:

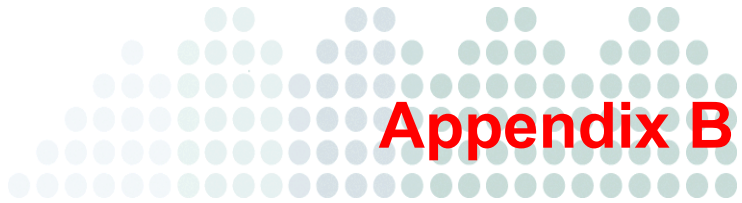
```
X-Virus-ID: EICAR Test String
```
- “X-Infection-Found” returns a numeric code for the type of infection, the resolution, and the risk description.

For more details on the parameter values, see:

```
http://www.icap-forum.org/documents/specification/draft-stecher-  
-  
icap-subid-00.txt
```

To enable the X-Virus-ID header:

1. From the main menu, click **Administration > Network Configuration > Deployment Mode**.
2. On the **Deployment Mode** page, select **Enable 'X-Virus-ID' ICAP header** and/or **Enable 'X-Infection-Found' ICAP header**.



Tuning and Troubleshooting

This appendix explains the following:

- *IWSVA Performance Tuning on page B-2*
- *Troubleshooting on page B-6*

IWSVA Performance Tuning

If you are experiencing issues with slow browsing performance, consider the following modifications and the InterScan Web Security Virtual Appliance (IWSVA) remote rating service.

URL Filtering

IWSVA utilizes the Trend Micro URL Filtering Engine to perform URL categorization and reputation rating based on the data supplied by the Trend Micro Web Reputation feature. Trend Micro recommends using the default setting of a weekly update check to ensure that your installation has the most current URL Filtering Engine.

IWSVA can control URL access based on Web Reputation feedback, the URL Filtering module, or a combination of both. The combination of Web Reputation and the URL Filtering module is a multi-layered, multi-threat protection solution provided by IWSVA.

The URL Filtering module grants or denies Web access based on the category to which a URL belongs. Web Reputation grants or denies Web access based on whether the requested URL is a phishing or pharming threat, has hacking potential, or has a reputation score that deems it untrustworthy. Both the optional URL Filtering module and Web Reputation are controlled by the specifications you make in policies.

For additional details, see Chapter 8 in the Administrator's Guide.

LDAP Performance Tuning

When running IWSVA to use the User/group name authentication identification method (LDAP), HTTP proxy performance becomes dependent upon the responsiveness of the LDAP directory server. In a worst case scenario, every HTTP request would require an LDAP query to authenticate the user's credentials. These queries introduce latency in terms of the transmit and receive delay between IWSVA and the LDAP server, and add load to the LDAP server itself.

LDAP Internal Caches

To reduce the amount of LDAP queries required, IWSVA provides several internal caches:

- **User group membership cache:** This cache can store group membership information. By default, entries in this cache will be valid for two hours, or until the cache fills (at which point the entries are replaced, starting with the oldest).

The time to live (TTL) for entries in this cache can be configured in the Web console: **Administrator > IWSVA Configuration > User Identification**.

- **Client IP to User ID cache:** This cache associates a client IP address with a user who recently authenticated from that same IP address. Any request originating from the same IP address as a previously authenticated request will be attributed to that user, provided the new request is issued within a configurable window of time (15 minutes by default for HTTP, 90 minutes for ICAP) from that authentication. The caveat is that client IP addresses seen by IWSVA must be unique to a user within that time period, thus this cache is not useful in environments where there is a proxy server or source NAT between the clients and IWSVA, or where DHCP frequently reassigns client IPs.

To enable or disable this cache, change the `enable_ip_user_cache` setting in the `[user-identification]` section of the `intscan.ini` file. To change the TTL of this cache, change the `ip_user_central_cache_interval` (unit is hours). For example, to create a TTL of 30 minutes, enter `0.5`.

- **User authentication cache:** This avoids re-authenticating multiple HTTP requests passed over a persistent connection. When users pass the credential validation over a persistent connection, IWSVA adds an entry (two important keys in one cache entry are the client's IP address and the client's username) in the user authentication cache so the subsequent requests over a keep-alive connection will not authenticate again. The client IP address and client's username serve as two forward references, or links, to the "client IP to user ID cache" and "user group membership cache," respectively. IWSVA will thus still be able to retrieve the user's connection information from both the IP-user and user-group caches.

When deploying IWSVA with LDAP integration, it is important to consider the additional load that authenticating HTTP requests will place on the LDAP directory server. In an environment that cannot effectively use the client IP to user ID cache, the directory server will need to be able to handle queries at the same rate as IWSVA receives HTTP requests.

Disable Verbose Logging When LDAP is Enabled

Trend Micro recommends turning off verbose logging in the `intscan.ini` file, under the `[http]` section, “verbose” parameter) when LDAP is enabled for server performance reasons. Verbose logging is primarily used by software developers to identify abnormal application behavior and troubleshooting. In a production deployment, verbose logging is usually unnecessary.

If verbose logging is enabled and LDAP is also enabled, IWSVA will log user authentication information and group membership information in the HTTP log in the `\Log` folder. Logs might contain hundreds of lines per user and, therefore, significantly consume disk space, depending on the amount of internal traffic and the number of groups with which a user is associated. Verbose logging keeps the service busy with issuing I/O operations to the operating system. This might prevent the service from responding to HTTP requests in a timely fashion, and latency might occur. In an extreme bursting HTTP traffic environment, it's possible to observe significant delays when IWSVA starts up in the verbose mode.

LDAP Authentication in Transparent Mode

Before configuring LDAP authentication on IWSVA deployed in transparent mode, review the following criteria to ensure each item is fully met.

- IWSVA must have a valid hostname assigned (click **Administration > Deployment Wizard**, then update host name on Network Interface page). Make sure the hostname is also entered in the corporate DNS server.
- Ensure that the user ID cache is enabled. By default, this is enabled. If it has been disabled for any reason, it must re-enabled before enabling transparent mode authentication. You can enable user ID cache using the `configure module ldap ipuser_cache enable` command in the CLI.
- By default, IWSVA keeps user ID cache information for up to two hours. If you need to lower the cache time-out value, use the `configure module ldap ipuser_cache interval` command in the CLI to set a shorter cache interval.
- If authentication is enabled, IWSVA will block all nonbrowser applications trying to access the Internet. For example, the MSN application might try to access the Internet before the user has had a chance to log in the IWSVA server. If this happens, the application will be blocked as the user has not successfully authenticated to IWSVA. You can perform one of the following:

- a. Bypass LDAP authentication for the application by adding the URLs that application accesses to “Global Trusted URLs.” The URLs in this list will bypass both authentication and content scanning.
- b. Instruct users to open their Web browsers and get authenticated before starting up applications that need Internet access.
- c. Add the IP address of the client machine to “LDAP authentication White List.” IP address in this list will bypass LDAP authentication.

Note: When User/group authentication is enabled in either forward proxy mode or transparent mode with an Active Directory, you can take advantage of the automatic authentication feature provided in the Internet Explorer Web browser. With automatic authentication, clients already logged on to the domain network can access the local intranet without having to enter the log on information (such as the username and password); that is, no password pop-up screen displays.

Refer to the IWSVA Administrator’s Guide for detailed configuration steps.

Troubleshooting

Troubleshooting Tips

- **Issue:** IWSVA could not connect to the database specified in the Database Connection Settings page. The IWSVA management console displays the following error message:

```
JDBC-ODBC BRIDGE: [UNIXODBC] Could not connect to the
server; Could not connect to remote socket.
```

Solution:

- Check the ODBC connection or the database server and try again.
- **Issue:** The IWSVA management console displays an authentication error message.

```
JDBC-ODBC BRIDGE: [UNIXODBC] FATAL: Password authentication
failed for user.
```

Solution:

- Verify the user credential for the PostgreSQL Server and also ensure that the database settings are correct (**Administration > IWSVA Configuration > Database Connections**). If the problem persists, ensure that the permissions in the `etc/iscan/odbc.ini` file are correct.

Before Contacting Technical Support

When contacting Technical Support with your issues, having specific information can streamline the process.

Installation Problems

Collect the following information about your installation problem before contacting Trend Micro technical support to expedite the process.

1. IWSVA version and build number
2. Screenshot of the exact error that appears during installation
3. The stage of the installation

General Feature Problems

If you have problems with IWSVA, collect the following information to provide to Trend Micro support:

- The system file(s) that describes the current state of IWSVA.

To compile these files, access the Web console and choose **Administration > Support** and then click **Generate System Information File**. This button is an extension of the Case Diagnostic Tool (CDT), allowing you to package the current machine “state” at a click of a button.

The system file(s) that IWSVA generates from clicking the **Generate System Information File** button are packaged into a single file with the following format:
`info_YYYYMMDD_999999.tar.tz`

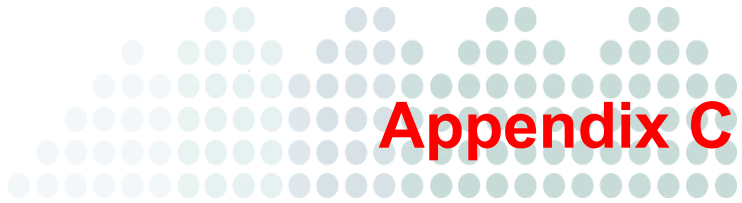
Where YYYY is the current year, MM is the current month, and DD is the current day that the package file was generated. 999999 is the UNIX time code.

The system file(s) contains the following information:

- **IWSVA information**—Includes IWSVA product version, engine version and build number, current pattern file (if available), and IWSVA hot fixes and service pack information. Product and integration settings are also part of this information
- **IWSVA system logs**—Includes IWSVA logs and debug logs, logs generated by the syslogd daemon (if system logs are enabled), and the core dump file
- **System/network information**—Includes the hardware configuration, operating system, build, system resource status, other application installed, and network information
- **CDT-compliant configuration/plugin information**—Includes information about changes made to CDT as a result of IWSVA adding a new component, such as a TCM or MCP agent
- Core files are first created in the first directory listed below, and then moved to the second directory listed:
 - `/etc/iscan/CoreDump`
 - `/etc/iscan/UserDumps`

Use these files when working with Trend Micro technical support to help diagnose the cause of your problem. To view the files yourself, use a program like GDB, the GNU Project debugger.

- Log file for the day the issue occurred
 - All log files the day the issue occurred (logs are stored in `/etc/iscan/log` by default)
 - Make sure `verbose=1` is set in the `[ftp]`, `[http]`, and `[notification]` sections of the `intscan.ini` file
 - Make sure `log_trans=yes` is set under the `[ftp]` and `[http]` sections of the `intscan.ini` file
- From the Web console, take a screen shot of the **System Status** page.
- Record the IWSVA version number
- URL samples (if applicable)
- Get a packet capture of the failing transaction by using the CLI capture command (for example, enter `start task capture interface eth0` in enable mode).



Best Practices for IWSVA Installation and Deployment

This appendix describes the following:

- *IWSVA Installation Overview on page C-2*
- *Properly Sizing Your Environment on page C-4*
- *Selecting Deployment Method and Redundancy on page C-5*

IWSVA Installation Overview

This installation overview provides a quick reference on the order and key steps to install and configure InterScan Web Security Virtual Appliance (IWSVA) to function with the core scanning, logging, and reporting features. The detailed sections in the Best Practices appendix of the *IWSVA Administrator's Guide* will provide the URLs for downloading the necessary material. For complete instructions on installing IWSVA, please refer to the following chapters:

- [Installing InterScan Web Security Virtual Appliance on page 3-1](#)
- [Upgrade from InterScan Web Security Virtual Appliance 5.6 to IWSVA 6.0 on page 4-1](#)
- [Migrating to InterScan Web Security Virtual Appliance on page 4-1](#)

For complete feature and command instructions, refer to the *IWSVA Administrator Guide*.

To install and configure IWSVA:

1. Obtain the latest IWSVA software and documentation set from the Trend Micro Update Center or by purchasing the IWSVA installation disks. You can download IWSVA products and updates from:
http://downloadcenter.trendmicro.com/index.php?regs=NABU&clk=result_page&clkval=drop_list&prodid=86
2. Register the product to obtain the Activation Codes. These will be required to activate IWSVA and its core modules. Products can be registered at:
https://olr.trendmicro.com/registration/us/en-us/product_login.aspx
3. Review the *IWSVA Customer Sizing Guide* and *IWSVA Installation Guide* to determine the deployment topology and the number of IWSVA units required to support your environment.
4. Install the IWSVA application with the Activation Keys obtained from Step 2. Use the **Administration > Product License** function to perform this task.
5. Download any service packs and critical patches that are applicable to the IWSVA product you installed. Service packs and critical patches are version specific and are cumulative with the latest service pack containing the previous hot fixes and critical patches from the previous service packs. Best practice is to download and install the latest service pack for your IWSVA version and any newer critical patches to bring the IWSVA unit up to date.

IWSVA provides operating system updates separately from application service packs. Make sure the latest operating system patch is also downloaded and applied along with the application service pack. Always read the patch's ReadMe file to familiarize yourself with the installation procedure before upgrading your system.

Use the **Administration > System Updates** functions to perform these tasks.

6. Configure the system settings. This includes setting the system date and time, configuring optional network configurations (such as enabling SSH for remote access, PING, optional static routes, etc), defining optional upstream proxy servers, enabling SNMP, and so forth. Use the Administration function to perform these tasks.
7. Configure IWSVA to a corporate LDAP server if you need to enforce policies, log events, and report Internet activity based on LDAP users and/or groups. Use the **Administration > IWSVA Configuration > User Identification** tab to perform this function.
8. Review the default settings for the automatic pattern file and scan engine update intervals. Change to meet your needs if necessary. You can also perform a manual update for a newly installed IWSVA system to update the signature files and scan engines. Use the Updates function to perform these tasks.
9. Configure log settings and external syslog servers to set the logging granularity and setup any 3rd party logging support. Review the default system log retention option and change to meet your needs if necessary. Use the Logs function to perform these tasks.
10. Create policies to monitor and govern Internet traffic. Policies can be defined for the following protocols and traffic types: Application Control, HTTPS, HTTP, Applet & ActiveX, URL Filtering, Access Quota, and FTP. Use the Application Control, HTTP and FTP functions to perform these tasks.
11. Define report templates and scheduled reports. Review the default number of scheduled reports to save for your daily, weekly, and monthly reports. If necessary, change to meet your needs. Use the Reports function to complete these tasks.
12. Create additional administrator, auditor, or reporter accounts to backup your administrator account and to grant other users access to administrative and reporting functions. Use the **Administration > Management Console > Account Administration** function to complete this task.

13. Backup the IWSVA configuration to keep a copy of the newly created configuration. Use the **Administration > Config Backup/Restore** function to complete this task.
14. Optional installation steps may include the following:
 - Customizing the notification messages
 - Registering IWSVA to the Advanced Reporting & Management (ARM) module
 - Registering IWSVA to Trend Micro's Control Manager (TMCM) central management system

Properly Sizing Your Environment

Before installing IWSVA into your network, you must first determine how many IWSVA servers are required to support your company's user population and Internet activity. Please refer to the *IWSVA Customer Sizing Guide* for detailed information on how to calculate the number of IWSVA units needed for your environment.

Things to consider for properly sizing your environment include:

- Number of total users in your company that will access the Internet
- Number of users accessing the Internet simultaneously
- Average number of concurrent sessions used by each active user
- Growth in user population and Internet use
- The type of server hardware being used
- The amount of bandwidth IWSVA needs to scan
- Redundancy and failover

Best Practice Suggestions

- Always size your environment for growth. Trend Micro doesn't recommend sizing your deployment based on current maximum peak loads as internet usage will always grow.
- Architect redundancy into the IWSVA architecture to prevent against single points of failure and to provide roll over during a device failure.

- Redundant architectures must be designed to support your maximum number of users when it fails over to the backup unit or secondary. Otherwise, performance and response time expectations will drop when a unit fails.

Selecting Deployment Method and Redundancy

IWSVA is one of the most flexible Web gateway security products for deployment options. IWSVA can be deployed in the following topologies:

- Forward Proxy
- Transparent Bridge
- Transparent Bridge for High Availability
- WCCP
- ICAP
- Reverse Proxy
- Simple Transparency

Each deployment mode has its benefits and services a specific need. You should be aware of the advantages and disadvantages of each deployment mode before deciding on how to install the IWSVA product into your network. Please see [Deployment Primer on page 2-1](#) for detailed information on each deployment method and what key benefits are offered by each one.

If you are considering redundant architectures, you must review and consider the following points:

WCCP - IWSVA supports the Cisco WCCP protocol to allow you to build load sharing, redundancy, and scalability into your IWSVA architecture. If your routers and/or switches support Cisco WCCP, this is one of the most economical ways to add high availability features. One drawback of WCCP is that it can only redirect popular Internet protocols to the scanning devices efficiently. See the IWSVA ReadMe document for the WCCP versions supported.

ICAP - IWSVA supports ICAP v1.0 devices to allow you to scan content from popular caching servers. ICAP can also be used to create a scalable architecture through a one-to-many configuration with several IWSVA servers connected to a single cache server. This is a popular option for customers who need to cache web content to reduce bandwidth consumption and to lower Internet latency.

SQUID - IWSVA bundles the popular open source caching program, called Squid, to offer customers an economical way to cache web content without paying additional licensing fees. With IWSVA 3.1, Squid can be enabled through IWSVA's CLI interface and is deployable as a downstream proxy or an upstream proxy in relation to IWSVA. Starting with IWSVA 5.1, basic Squid configuration, reporting and enablement is integrated with the IWSVA 5.1 Web console. Squid is supported in upstream proxy mode with IWSVA 5.1. Squid support is offered through the open source community and is provided by Trend Micro on its Web Gateway products for convenience.

Proxy Pac File - Simple load sharing can be created through a proxy pac file if you are deploying in Forward Proxy mode. Many customers have experienced good results by creating a proxy pac file that routes traffic to a specific IWSVA device based on source IP address or source network. This allows you to manually scale your network and to load share users across many IWSVA servers without any added costs or network complexity.

You can also configure the proxy pac file to return multiple proxy servers to build a simple redundancy solution. Be aware that not all browsers may be able to interpret the multiple proxy server response. If they can't interpret the multiple proxy servers, redundancy will not be possible.

Layer 4 Load Balancing Switches - IWSVA can support external load balancing switches in Forward Proxy Mode using the “simple transparency” feature. Having an external load balancing switch adds additional cost and configuration complexity, but delivers the highest performance and flexibility in terms of redundancy and load sharing. Commercial load balancers that Trend Micro customers have used successfully include Foundry Networks/Brocade, F5, and Citrix NetScaler. If cost is a consideration, alternative open source software-based load balancers such as Red Hat Enterprise can also provide good scalability and redundancy options.

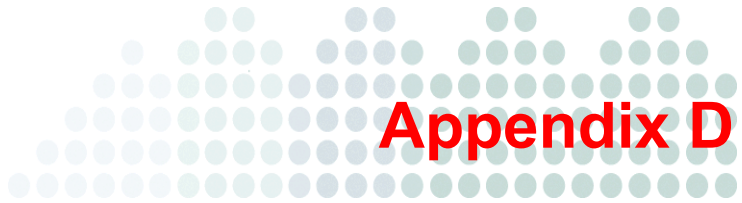
- If installing under VMware, consider using VMware's redundancy and fault tolerant functions to create a robust and scalable solution. These include:
 - VMotion
 - vSphere Fault Tolerance Services

Be aware that at the time of this writing, vSphere's Fault Tolerance service only permits one virtual CPU. This allows a full redundant solution to be developed, but offers less performance due to the single CPU limitation. For more information on setting up a vSphere FT configuration, refer to the *Best Practices Guide for Utilizing VMware Fault Tolerance for High Availability* document on the VMware web site.

Best Practice Suggestions

- IWSVA uses a hybrid malware scanning architecture that is comprised of cloud-based scanning and on-box scan engines. This solution provides one of the industry's highest detection and prevention rates. Cloud-based scan engines provide proactive detection and blocking services based on reputation services. To ensure fast performance with low latency, you need to provide IWSVA access to a fast and robust DNS architecture. ISP provided DNS servers should not be used as frequent DNS requests made by the IWSVA device may not be adequately supported and may possibly overwhelm the ISP's DNS server.
- IWSVA's internal clock settings should be synchronized with other servers and devices in your security architecture. These include LDAP servers, syslog servers, upstream SIEM devices, and Trend Micro's Advanced Reporting and Management server. If the date and time are mismatched, you may experience improper logging and reporting of critical events. For best results, use the same set of NTP servers to sync the date and time on all devices.
- For high volume installations of more than 3000 users, you should consider dedicating a server to house the Squid caching function (if enabled). During high workloads, IWSVA and Squid will contend for the same disk services. This will affect the cache hit performance as well as IWSVA's reporting performance. One alternative is to use two physical hard disk adapter cards in the same server with two separate disk volumes - one for IWSVA and one for Squid.
- For redundancy and scalability, consider installing more than one instance of IWSVA and using one of the scaling options mentioned in this section to eliminate single points of failure and improve system up time. Alternatively, two IWSVA devices can be installed as cluster pairs in High Availability deployment mode.
- For installations with an upstream proxy, you must properly configure IWSVA's upstream proxy settings in the Forward Proxy settings and the Update Connection Settings to ensure proper Internet access.
- If you are planning to use IWSVA to protect external facing web servers that customers can access, consider installing a separate instance of IWSVA in reverse proxy mode to protect these web servers. Do not place the external facing web servers behind your corporate IWSVA server that your normal users would go through as this may affect your ability to enforce both customer facing policies and your normal corporate user policies.

- For installations with Transparent Bridge mode on VMWare ESX, the external interface of IWSVA will connect to a virtual switch which binds to a physical network adapter. It is better not to connect any other virtual machine to this virtual switch and leave the virtual machine dedicate for IWSVA usage.
- After installing IWSVA, always check the Trend Micro download site for additional critical patches and/or service packs to ensure that the latest patches are installed. Patches listed on the IWSVA Download site are listed in chronological order. Always apply the latest application and OS patches to your specific version. IWSVA service packs are backwardly compatible. That is, the latest service pack will always contain any hot fixes and patches issued prior to the service pack's release date. You do not need to install previous patches before the latest applicable service pack for your product. IWSVA may have the following patch types:
 - **Application Service Pack** - a service pack or patch that is used to update the IWSVA application. The latest service pack will contain all previously released patches.
 - **OS Service Pack** - a service pack or patch that is used to update the operating system and driver files. The latest service pack will contain all previously released patches.
 - **Critical Patch** - a patch that is used to fix an urgent application or OS problem and will not contain previous patches. It is only issued to fix a specific problem.



Maintenance and Technical Support

This appendix describes the following:

- *Product Maintenance on page D-2*
- *Contacting Technical Support on page D-4*
- *Security Information Center on page D-7*

Product Maintenance

From time to time, Trend Micro might release a patch for a reported known issue or an upgrade that applies to your product. To find out whether there are any patches available for InterScan Web Security Virtual Appliance (IWSVA), visit the following URL:

<http://www.trendmicro.com/download/>

The Update Center screen displays. Select your product from the links on this screen:

Clicking the link for Trend Micro™ InterScan™ Web Security Virtual Appliance (IWSVA) takes you to the Update Center page for IWSVA. Scroll down to review the patches that are available.

Patches are dated. If you find a patch that you have not applied, open the readme document to determine whether the patch applies to you. If so, follow the installation instructions in the readme.

Maintenance Agreement

A Maintenance Agreement is a contract between your organization and Trend Micro, regarding your right to receive technical support and product updates in consideration for the payment of applicable fees. When you purchase a Trend Micro product, the License Agreement you receive with the product describes the terms of the Maintenance Agreement for that product.

A license to the Trend Micro software usually includes the right to product updates, pattern file updates, and basic technical support (“Maintenance”) for one (1) year from the date of purchase only. After the first year, Maintenance must be renewed on an annual basis at Trend Micro’s then-current Maintenance fees.

Note: If the Maintenance Agreement expires, your License Agreement will not.

If the Maintenance Agreement expires, scanning can still occur, but the product cannot be updated, even manually. Also, you will not be entitled to receive technical support from Trend Micro.

Typically, ninety (90) days before the Maintenance Agreement expires, you will be alerted of the pending discontinuance. You can update your Maintenance Agreement by purchasing renewal maintenance from your reseller, Trend Micro sales, or on the Trend Micro Online Registration URL:

<https://olr.trendmicro.com/registration/>

Renewing Your Maintenance Agreement

Trend Micro or an authorized reseller provides technical support, pattern file downloads, and program updates for one (1) year to all registered users, after which you must purchase renewal maintenance.

If your Maintenance Agreement expires, scanning will still be possible, but pattern file and program updates will stop. To prevent this, renew the Maintenance Agreement as soon as possible.

To purchase renewal maintenance, contact the same vendor from whom you purchased the product. A Maintenance Agreement, extending your protection for a year, will be sent by post to the primary company contact listed in your company's Registration Profile.

To view or modify your company's Registration Profile, log on to the account at the Trend Micro online registration Web site:

<https://olr.trendmicro.com/registration>

You are prompted to enter a log on ID and password.

To view your Registration Profile, type the log on ID and password created when you first registered your product with Trend Micro (as a new customer), and then click **Log on**.

Contacting Technical Support

To contact Trend Micro Technical Support, visit the following URL:

<http://www.trendmicro.com/us/home/products/support-services/index.html>

Then, click the link for one of the following regions:

- Asia/Pacific
- Australia and New Zealand
- Europe
- Latin America
- United States and Canada

Follow the instructions for contacting support in your region.

In the United States, Trend Micro representatives can be reached through phone, fax, or email. Our Web site and email addresses follow:

<http://www.trendmicro.com>

support@trendmicro.com

For regional contact information and the specific technical support numbers for all the regional and worldwide offices, open the IWSVA management console and choosing **Support** from the menu in the management console's banner.

General US phone and fax numbers follow:

Voice: +1 (408) 257-1500 (main)

Fax: +1 (408) 257-2003

Our US headquarters is located in the heart of Silicon Valley:

Trend Micro, Inc.
10101 N. De Anza Blvd.
Cupertino, CA 95014

TrendLabs

TrendLabs is Trend Micro's global infrastructure of antivirus research and product support centers that provide up-to-the minute security information to Trend Micro customers.

The "virus doctors" at TrendLabs monitors potential security risks around the world, to ensure that Trend Micro products remain secure against emerging risks. The daily culmination of these efforts are shared with customers through frequent virus pattern file updates and Advanced Threat Scan Engine refinements.

TrendLabs is staffed by a team of several hundred engineers and certified support personnel that provide a wide range of product and technical support services. Dedicated service centers and rapid-response teams are located in Tokyo, Manila, Taipei, Munich, Paris, and Lake Forest, CA, to mitigate virus outbreaks and provide urgent support.

Knowledge Base

The Trend Micro Knowledge Base is a 24x7 online resource that contains thousands of do-it-yourself technical support procedures for Trend Micro products. Use Knowledge Base, for example, if you are getting an error message and want to find out what to do to. New solutions are added daily.

Also available in Knowledge Base are product FAQs, hot tips, preventive antivirus advice, and regional contact information for support and sales.

Knowledge Base can be accessed by all Trend Micro customers as well as anyone using an evaluation version of a product. Visit:

<http://esupport.trendmicro.com/en-us/business/pages/technical-support.aspx>

And, if you can't find an answer to a particular question, the Knowledge Base includes an additional service that allows you to submit your question through an email message. Response time is typically 24 hours or less.

Known Issues

Known issues are features in your IWSVA software that might temporarily require a workaround. Known issues are typically documented in section 7 of the Readme document you received with your product. Readme files for Trend Micro products, along with the latest copies of the product manuals, can also be found in the Trend Micro Update Center:

<http://www.trendmicro.com/download/>

Known issues can be found in the technical support Knowledge Base:

<http://esupport.trendmicro.com/en-us/business/pages/technical-support.aspx>

Trend Micro recommends that you always check the Readme file for information on known issues that could affect installation or performance, as well as a description of what's new in a particular release, system requirements, and other tips.

Sending Suspicious Code to Trend Micro

You can send your viruses, infected files, Trojans, suspected worms, spyware, and other suspicious files to Trend Micro for evaluation. To do so, visit the Trend Micro Submission Wizard URL:

<http://subwiz.trendmicro.com/SubWiz>

Click the “Submit a suspicious file/undetected virus” link. The following screen displays.

You are prompted to supply the following information:

- **Email:** Your email address where you would like to receive a response from the antivirus team.
- **Product:** The product you are currently using. If you are using multiple Trend Micro products, select the product that has the most effect on the problem submitted, or the product that is most commonly in use.
- **Number of Infected Seats:** The number of users in your organization that are infected.
- **Upload File:** Trend Micro recommends that you create a password-protected zip file of the suspicious file, using the word “virus” as the password—then select the protected zip file in the **Upload File** field.

- **Description:** Include a brief description of the symptoms you are experiencing. Our team of virus engineers will “dissect” the file to identify and characterize any risks it might contain and return the cleaned file to you, usually within 48 hours.

Note: Submissions made through the submission wizard or virus doctor are addressed promptly and are not subject to the policies and restrictions set forth as part of the Trend Micro Virus Response Service Level Agreement.

When you click **Next**, an acknowledgement screen displays. This screen also displays a case number for the problem you submitted. Make note of the case number for tracking purposes.

If you prefer to communicate by email, send a query to the following address:

`virusresponse@trendmicro.com`

In the United States, you can also call the following toll-free telephone number:

(877) TRENDAY, or 877-873-6328

Security Information Center

Comprehensive security information is available over the Internet, free of charge, on the Trend Micro Security Information Web site:

<http://www.trendmicro.com/vinfo/>

Visit the Security Information site to:

- Read the Weekly Virus Report, which includes a listing of risks expected to trigger in the current week, and describes the 10 most prevalent risks around the globe for the current week
- View a Virus Map of the top 10 risks around the globe
- Consult the Virus Encyclopedia, a compilation of known risks including risk rating, symptoms of infection, susceptible platforms, damage routine, and instructions on how to remove the risk, as well as information about computer hoaxes
- Download test files from the European Institute of Computer Anti-virus Research (EICAR), to help you test whether your security product is correctly configured
- Read general virus information, such as:

- The Virus Primer, which helps you understand the difference between viruses, Trojans, worms, and other risks
- The Trend Micro *Safe Computing Guide*
- A description of risk ratings to help you understand the damage potential for a risk rated Very Low or Low vs. Medium or High risk
- A glossary of virus and other security risk terminology
- Download comprehensive industry white papers
- Subscribe, free, to Trend Micro's Virus Alert service, to learn about outbreaks as they happen, and the Weekly Virus Report
- Learn about free virus update tools available to Webmasters
- Read about TrendLabs, Trend Micro's global antivirus research and support center

To open Security Information:

1. Open the IWSVA management console.
2. Click **Security Info** from the drop-down menu at the top-right panel of the screen. The **Security Information** screen displays.



Appendix E

Creating a New Virtual Machine Under VMware ESX for IWSVA

This appendix describes how to create a new virtual machine for InterScan Web Security Virtual Appliance (IWSVA).

- *Introduction on page E-2*
- *Creating a New Virtual Machine on page E-2*
- *Powering On the IWSVA Virtual Machine and Completing the Installation on page E-16*

Introduction

The actual installation of ESX is not covered in this document. Refer to VMware's product documentation to install this product.

The steps outlined in the following section detail the process to create a new virtual machine under VMware ESX to install IWSVA.

Creating a New Virtual Machine

Use the following steps as a guideline for creating the virtual machine for your environment. The number of CPUs, NIC cards, memory, and hard disk space selected should reflect the requirements for your deployment. The values entered here are for instructional purposes.

To create a new virtual machine:

1. Open the VMware Virtual Infrastructure client and click the **Configuration** tab.
2. From the **Hardware** area, click **Storage**.

3. In the **Storage** area, double click a storage area that contains enough space to upload the IWSVA ISO.

The screenshot shows the VMware Configuration Tab for a storage area. The 'Storage' section contains a table with the following data:

Identification	Device	Capacity	Free	Type
storage2	vmhba32:1:0:1	148.50 GB	123.44 GB	vmfs3
storage1	vmhba0:1:0:3	9.25 GB	8.91 GB	vmfs3

The 'Details' section for 'storage2' provides further information:

- storage2**: 148.50 GB Capacity
- Location: /vmfs/volumes/4786f393-91...
- Used: 25.06 GB
- Free: 123.44 GB

The 'Details' section also includes a pie chart showing the usage of storage2. Below the chart are several sub-sections:

- Path Selection**: Fixed
- Properties**: Volume Label: storage2, Datastore Name: storage2
- Extents**: vmhba32:1:0:1 (148.58 ...), Total Formatted Capacity (148.50 ...)
- Paths**: Total: 1, Broken: 0, Disabled: 0
- Formatting**: File System: VMFS 3.31, Block Size: 1 MB

FIGURE E-1. Configuration Tab

The Datastore Browser window opens.

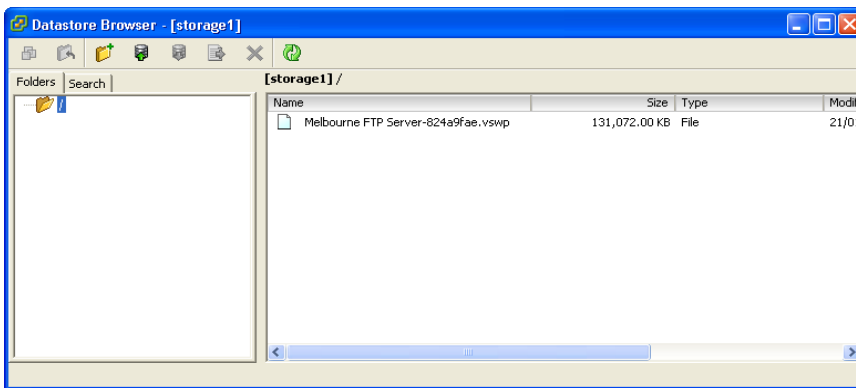


FIGURE E-2. Storage Area

4. From the button bar, click the upload button (database icon with upward-pointing arrow) and upload the IWSVA ISO to this datastore.
5. Close the datastore after the upload has completed.

To create the virtual machine

6. From the menu bar, select **File > New > Virtual Machine**.

The New Virtual Machine Wizard appears.

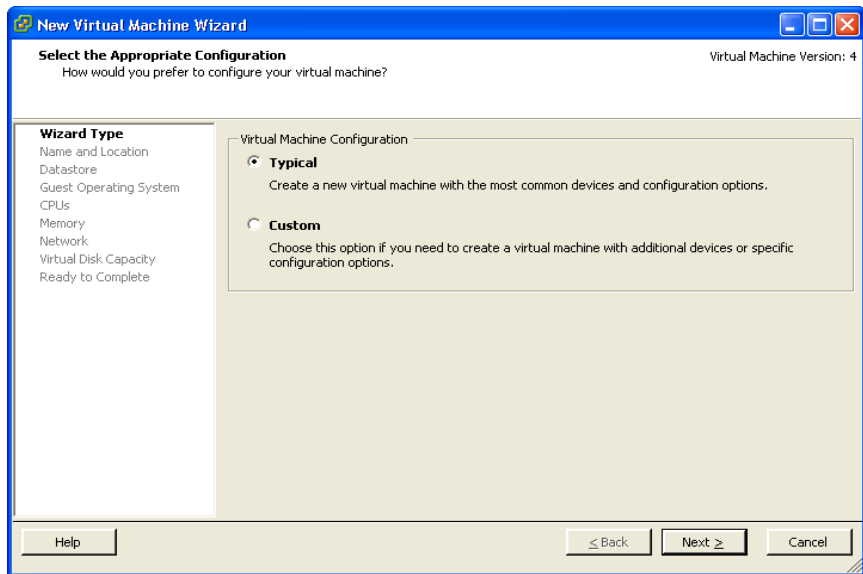


FIGURE E-3. Virtual Machine Configuration

7. Under **Virtual Machine Configuration**, leave **Typical** selected.
8. Click **Next**.

The Name and Location Selection page appears.

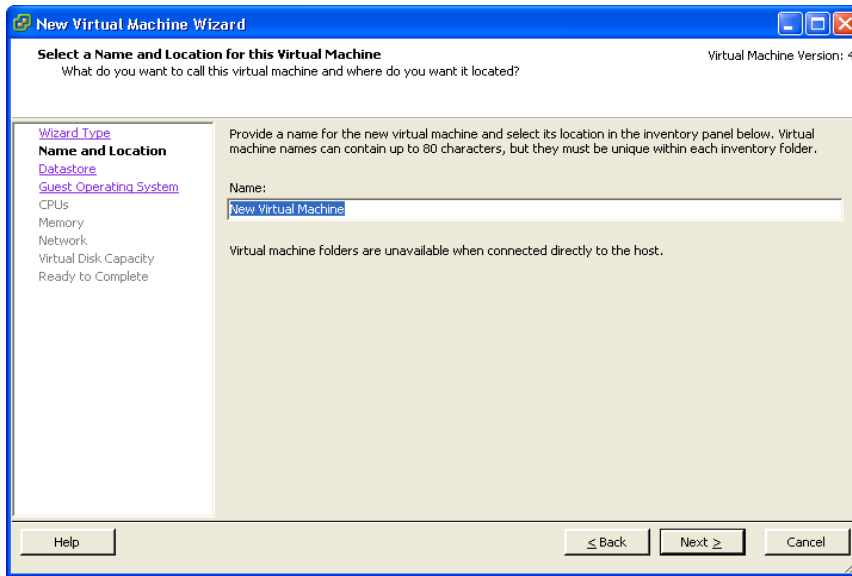


FIGURE E-4. Name and Location of Virtual Machine

9. Type in the **Name** field, an appropriate machine name and then click **Next**.

The Virtual Machine Datastore Selection page appears.

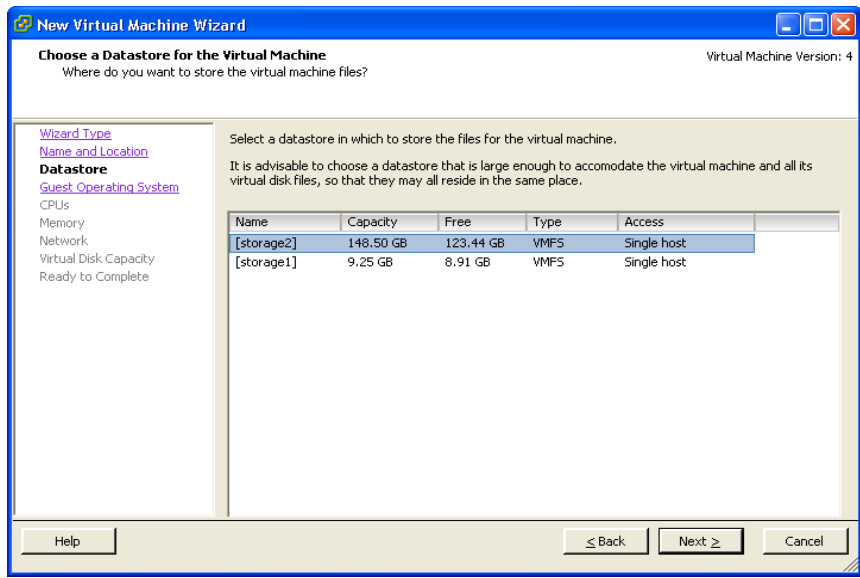


FIGURE E-5. Virtual Machine Datastore

10. Select the datastore where the virtual machine will reside.
This does not have to be the same datastore used to upload the IWSVA ISO.
11. Click **Next**.

The Virtual Machine Guest Operating System screen appears.

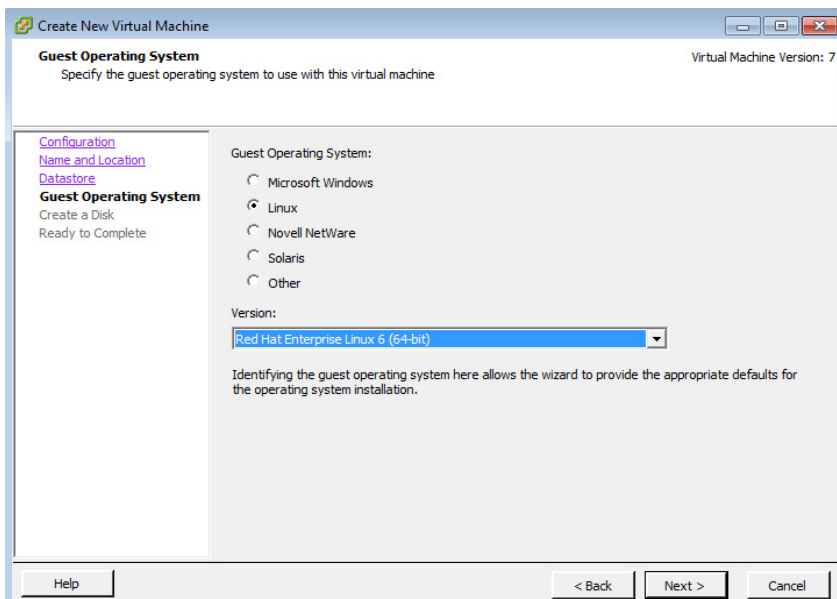


FIGURE E-6. Virtual Machine Guest Operating System

Note: If you are using ESXi 5.0, you must select Linux as the Guest Operating System and Red Hat Enterprise Linux 6 (64-bit).

12. For the guest operating system, select Linux and Red Hat Enterprise 6 64Bit.
13. Click **Next**.

The New Virtual Machine Wizard (Virtual CPUs) screen appears.

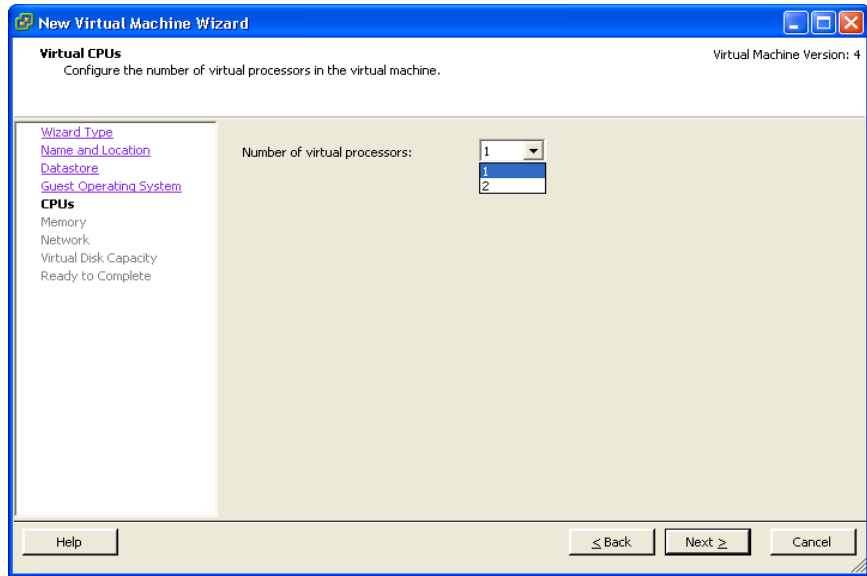


FIGURE E-7. Virtual Machine CPU

14. Select the number of processors for the virtual machine.
IWSVA takes advantage of the Virtual SMP, so select the maximum number of virtual processors available.
15. Click **Next**.

The New Virtual Machine Wizard (Memory) screen appears.

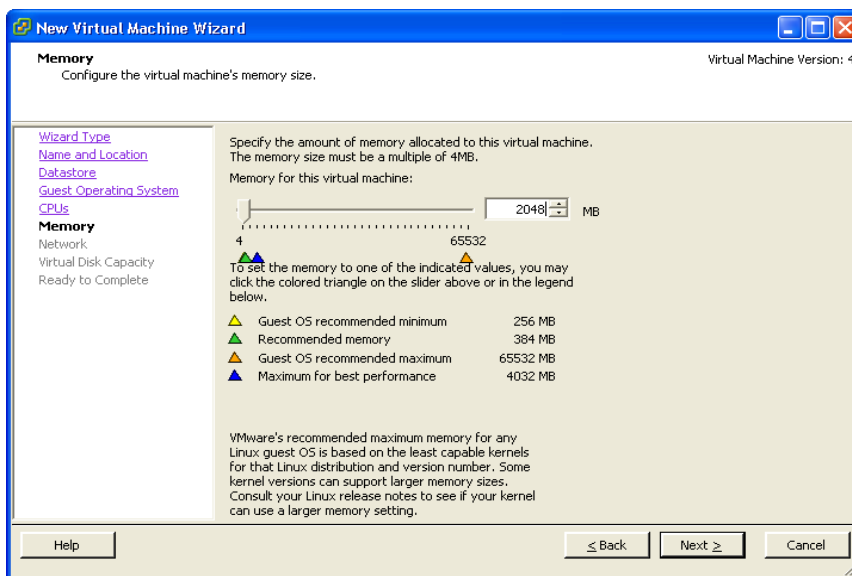


FIGURE E-8. Virtual Machine Memory

16. Allocate 2048MB of memory as a minimum for IWSVA.

For production networks, Trend Micro recommends at least 4096 MB of RAM.

17. Click **Next**.

The New Virtual Machine Wizard (Memory) screen appears.

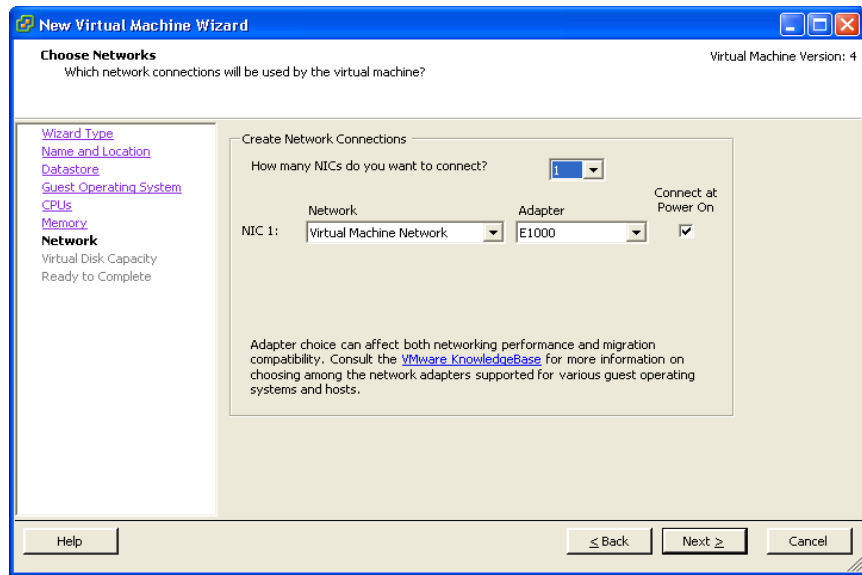


FIGURE E-9. Virtual Machine Network

18. Accept the default network settings and then click **Next**.

Note: Trend Micro recommends using E1000 or VMXNet3 for the adapter type. Silicon bypass cards are also recognized by VMware and can be used as normal network cards.

The Virtual Disk Capacity screen appears.

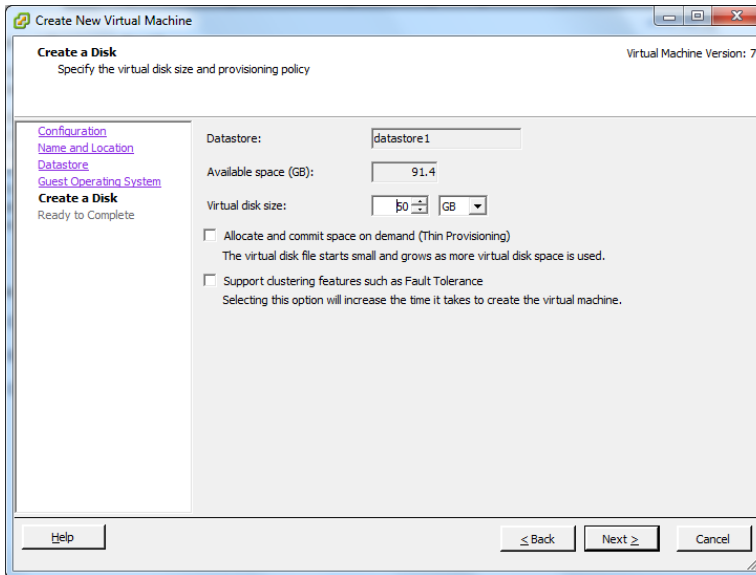


FIGURE E-10. Virtual Disk Capacity

19. For testing purposes, it is adequate to leave the 50GB disk allocation at its default. For production environments, provide at least 300GB for logging and reporting purposes. See [Hardware Requirements on page 1-2](#) for more information on disk space allocation.
20. Click **Next**.

The New Virtual Machine Wizard (Ready to Complete New Virtual Machine) screen appears.

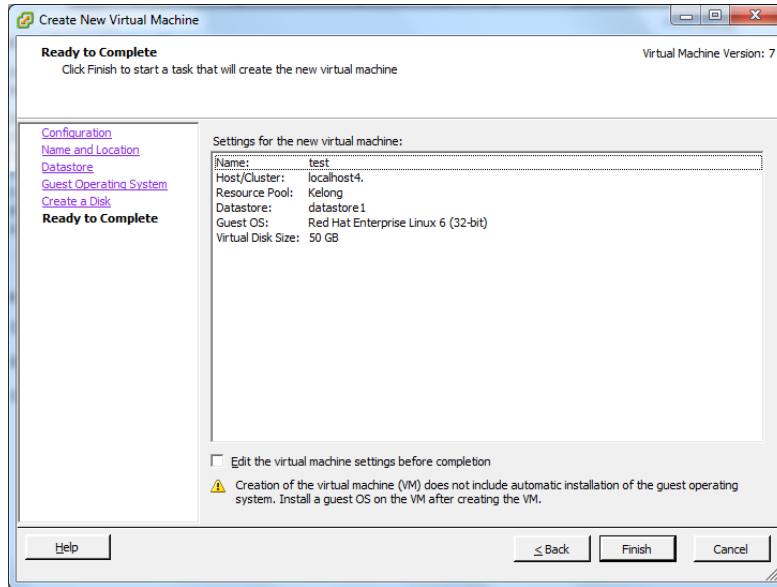


FIGURE E-11. Ready to Complete

21. Check the **Edit the virtual machine settings before submitting** check box and then click **Continue**.

The Virtual Machine Properties screen appears.

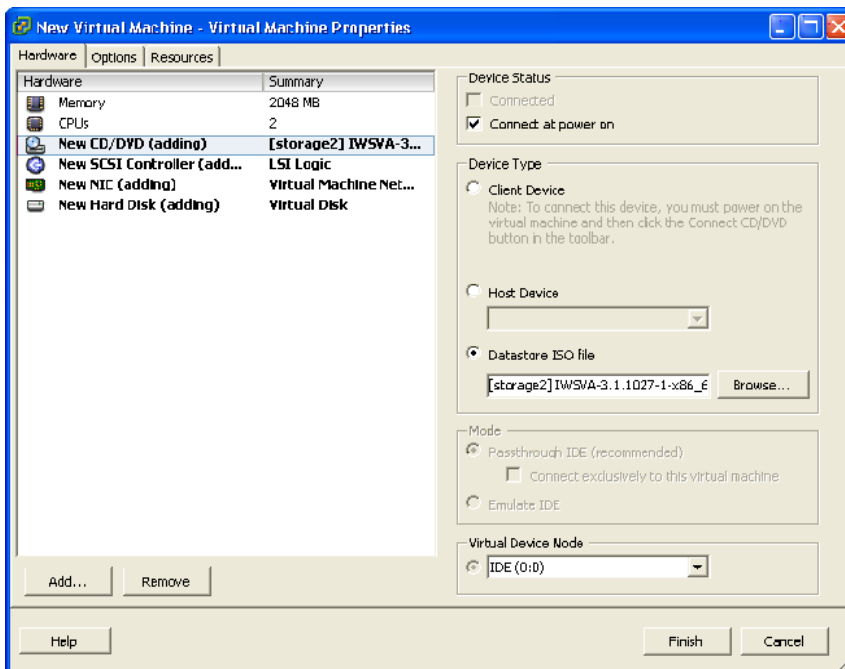


FIGURE E-12. Virtual Machine Properties screen

22. Click on the floppy drive and then click **Remove**.
23. Click **Resources** tab, and reserve CPU and memory for IWSVA.

WARNING! If you skip this step, IWSVA will not run normally.

24. Select the **New CD/DVD** option and then select the **Datastore ISO file** radio button on the right hand side.
25. Click **Browse** and then select the IWSVA ISO that was uploaded in Step 4.

If you did not copy the Installation ISO onto the VMware server's hard disk, then you can select **Host Device** or **Client Device** from which to load the installer.

Client Device uses the remote workstation's CD/DVD ROM drive to perform the installation and **Host Device** uses the VMware Server's CD/DVD ROM drive to perform the installation. Using one of these two methods saves about 500 MB or more of disk space on the VMware server.

26. Ensure that the **Connect at power on** check box for the **New CD/DVD** is checked.

Note: When IWSVA is installed on a VMware ESX server and configured in Transparent Bridge mode, you must enable the virtual switch to accept the Promiscuous mode in the ESX server.

When deploying IWSVA in bridge mode, do not connect the two data network interfaces to the same switch; otherwise, a loop will be created in your network.

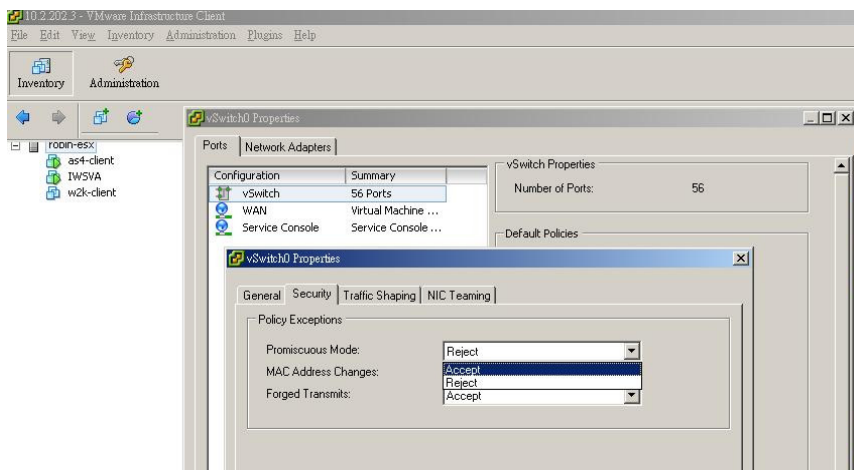


FIGURE E-13. Promiscuous mode in the ESX server

27. Click **Finish**.

The new IWSVA 6.5 Virtual Machine is now ready and configured to be powered on and begin the installation process.

Powering On the IWSVA Virtual Machine and Completing the Installation

Use the following steps as a guideline for completing the installation and powering on the virtual machine.

To power on a new virtual machine:

1. From the VMware Virtual Infrastructure client Console, select the name of the virtual machine you previously created.
2. Right-click the name and select **Power**, then select **Power On**. The virtual machine will power on.
3. Connect to the IWSVA virtual machine's console.

To connect to the IWSVA virtual machine's console:

1. From the VMware Virtual Infrastructure client Console, click the name of the virtual machine you created.
2. From the right frame, select the Console tab.
The IWSVA virtual machine logon prompt appears.
3. Type enable as the user name.
4. Type the password.

Note: By default the password for admin, root, and enable accounts is **adminIWSS85**.



Appendix F

Creating a New Virtual Machine Under Microsoft Hyper-V for IWSVA

This appendix describes how to create a new virtual machine for InterScan Web Security Virtual Appliance (IWSVA) under Microsoft Hyper-V.

- *Introduction on page F-2*
- *Installing IWSVA 6.5 on Microsoft Hyper-V on page F-3*

Introduction

Starting with IWSVA 5.1 SP1, Microsoft Hyper-V based virtual platforms are supported. This document provides a step-by-step installation guide to install IWSVA 6.5 on Hyper-V based virtual machines.

The actual installation of Hyper-V is not covered in this document. Refer to Microsoft's product documentation to install this product.

The procedure outlined in this document describes how to install IWSVA 6.5 onto a Windows 2008 Server R2 Hyper-V server. You must have the proper Microsoft Windows 2008 Server R2 with Hyper-V support installed before proceeding.

IWSVA Support for Hyper-V

IWSVA 6.5 will only support Hyper-V 2.0 with Windows Server 2008 R2 or later. The IWSVA installation for Hyper-V platforms only supports forward proxy mode, WCCP mode, ICAP mode, and reverse mode. Transparent bridge mode is not supported.

Hyper-V Virtualization Modes

Hyper-V provides two virtualization modes that support IWSVA:

1. Full-virtualization
2. Para-virtualization

Due to Hyper-V's performance limitations in full-virtualization mode, it is recommended to install IWSVA in para-virtualization mode. This allows IWSVA to achieve much higher throughput performance and supports enterprise networking environments. IWSVA 6.5 provides the necessary integrated Hyper-V drivers (the last version of integration services is v3.1) to support the installation under Hyper-V v2 as a para-virtualization virtual machine.

Installing IWSVA 6.5 on Microsoft Hyper-V

Use the following steps as a guideline for creating the virtual machine for your environment. The number of CPUs, NIC cards, memory, and hard disk space selected should reflect the requirements for your deployment. The values entered here are for instructional purposes.

To create a virtual network assignment:

1. From the Hyper-V **Server Manager** menu, right click **Hyper-V Manager**.

A menu appears.

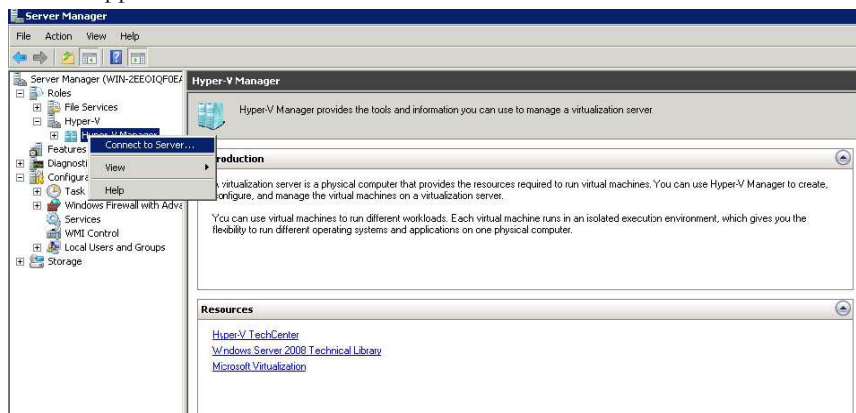


FIGURE F-1. Connect to Server

2. Select **Connect to Server**.

A dialog box appears prompting you to select the location of the virtualization server that you want to connect to.

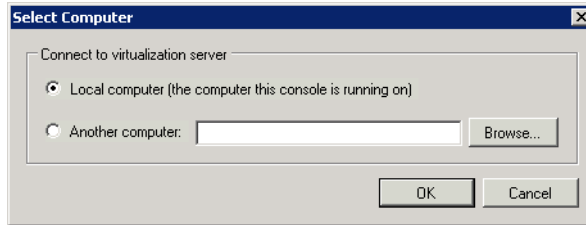


FIGURE F-2. Location of Virtualization Server

3. Select the location of the virtualization server and click **OK**.
4. With the correct Hyper-V server connected, right click on the Windows 2008 R2 server and select **Virtual Network Manager**.

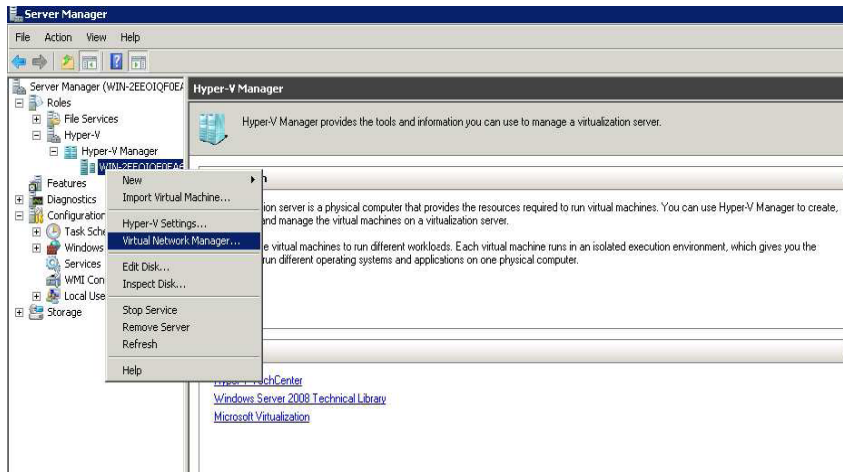


FIGURE F-3. Select Virtual Network Manager

5. Create a new virtual network by selecting **External** from the list of options and clicking **Add**.

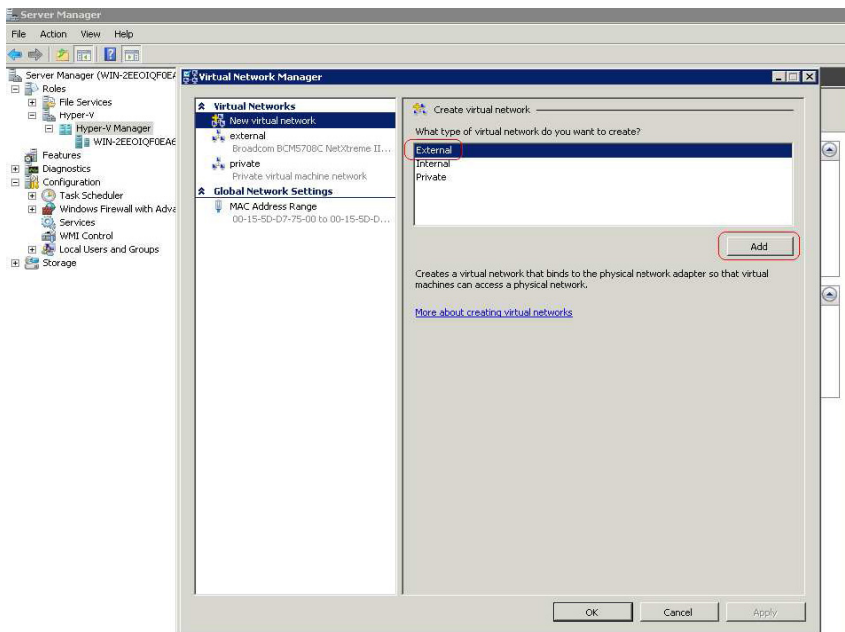


FIGURE F-4. Adding the “External” Virtual Network

- From the **External** pull-down menu, select the physical network adaptor you want to connect to the new virtual network to support IWSVA 6.5. See [Figure F-5](#).

Note: The physical adaptor must be connected to the network and have access to the corporate network and the public Internet.

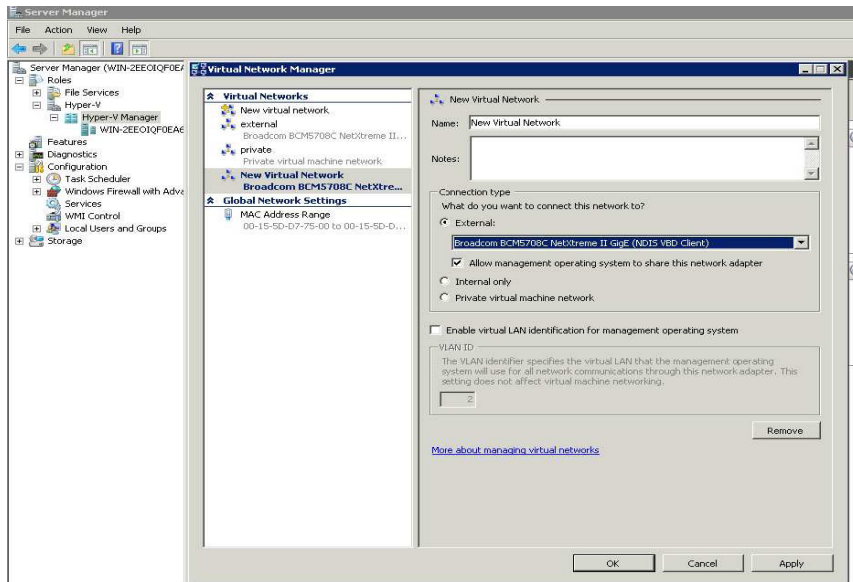


FIGURE F-5. Physical Network Adaptor Selection

WARNING! You must reserve CPU and memory for IWSVA. If you skip this step, IWSVA will not run normally.

Importing the IWSVA Image

After configuring the Hyper-V network settings, import the IWSVA 6.5 image into the new virtual machine. Trend Micro provides a pre-configured Hyper-V IWSVA 6.5 image for rapid deployment. To install IWSVA, import this pre-configured image onto your Windows 2008 R2 server using the following steps.

To import the IWSVA image:

1. In **Server Manager**, locate the folder of the virtual machine you want to configure and right click the name.

A menu appears.

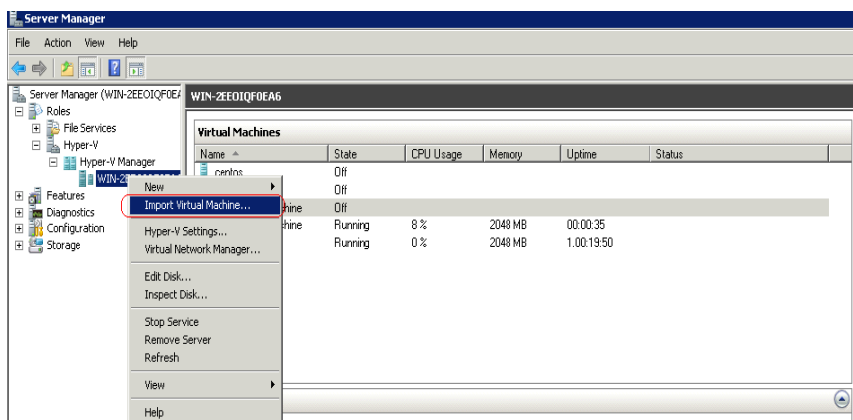


FIGURE F-6. Importing a New Virtual Machine

2. Select **Import Virtual Machine** from the menu options.

The **Import Virtual Machine** dialog box appears.

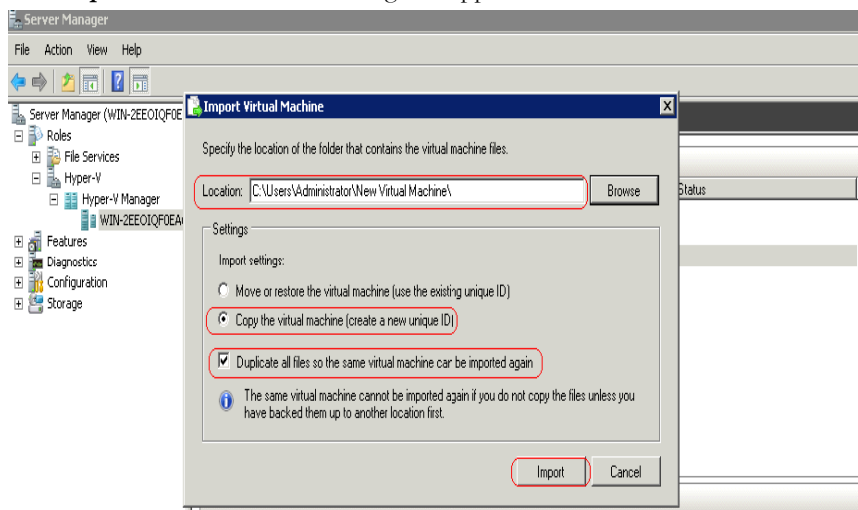


FIGURE F-7. Configuration for Importing IWSVA Image

3. In **Location**, specify the location of the folder that contains the virtual machine files.
4. In the **Settings** area, select the option to copy the virtual machine.
5. Select the option to duplicate all files.
6. Click **Import**.

A progress bar appears indicating the status of the import process.

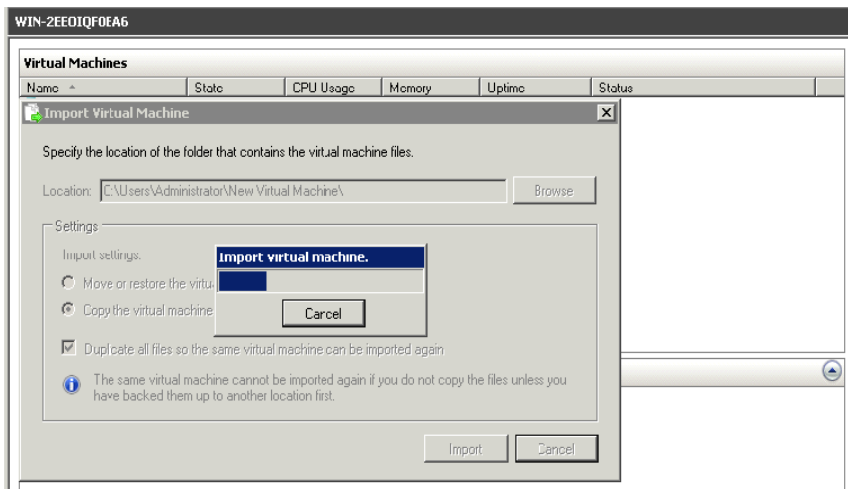


FIGURE F-8. Image Importing Progress

Assigning Resources to IWSVA

After the IWSVA image has been successfully imported, you can configure the necessary resources and assign them to the IWSVA virtual machine. This includes the network adaptor, CPU, memory, and hard disk space.

To assign resources to IWSVA:

1. In **Server Manager**, locate the folder of the virtual machine you want to configure and click the server name.

The **Virtual Machines** area appears.

2. Right click the virtual machine you want to configure.

A menu with a list of options appears.

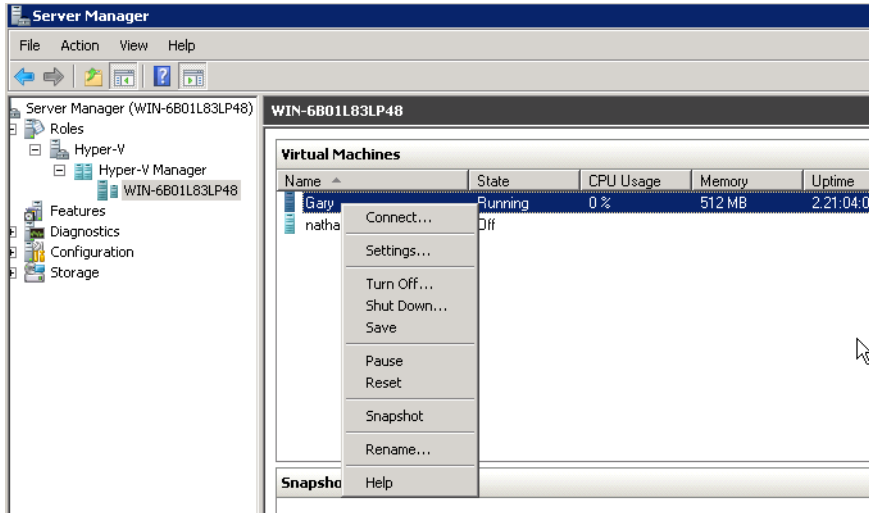


FIGURE F-9. Settings Menu Option

3. Select the **Settings...** option.

The **Settings** box for that virtual machine opens.

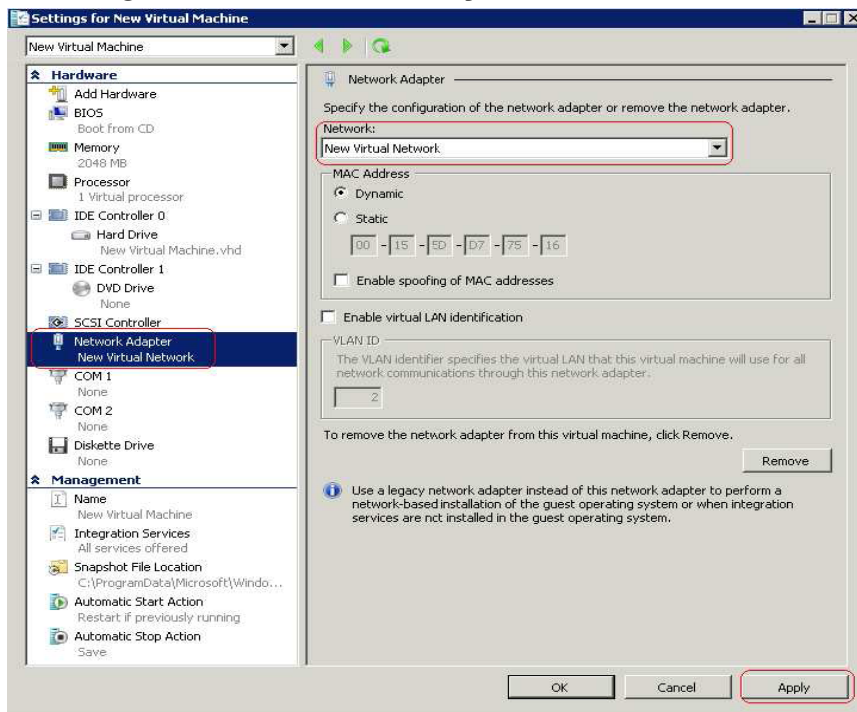


FIGURE F-10. Assigning Virtual Network Adaptor to IWSVA Virtual Machine

4. In the **Hardware** area, select **Network Adapter**.
5. In the **Network** pull-down menu, select the external network adaptor that you previously configured in step 6 of the procedure: *To create a virtual network assignment: on page F-3*
6. In the **Hardware** area, select **Processor** to configure the virtual machine's CPU.

The Processor area appears.

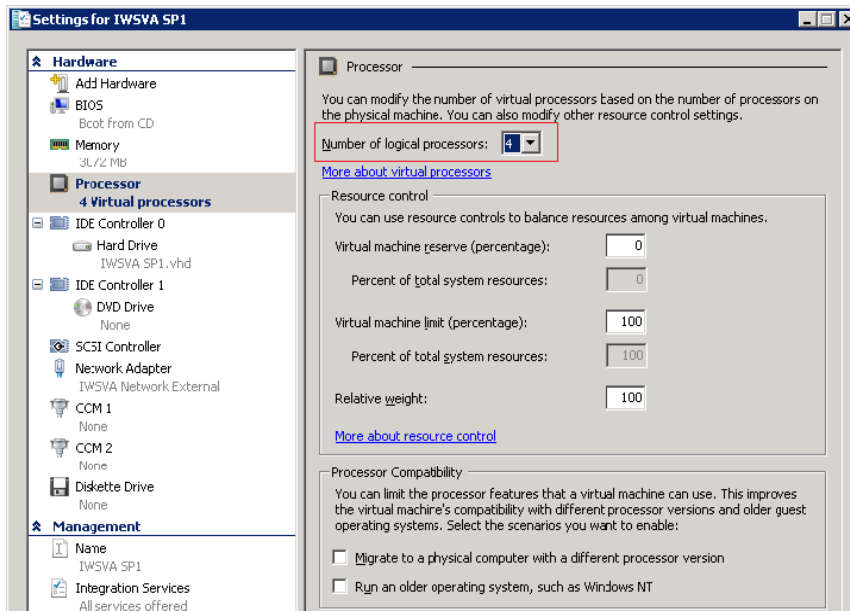


FIGURE F-11. Assigning Processors to the IWSVA Virtual Machine

7. Type the number of logical processors to allocate to the virtual machine.

Hyper-V allows you to assign up to four logical processors. IWSVA requires a minimum of two logical processors. Refer to the IWSVA 6.5 Sizing Guide for more information on sizing your environment.

8. In the **Hardware** area, select **Memory** to allocate memory for your IWSVA environment.

The **Memory** area appears.

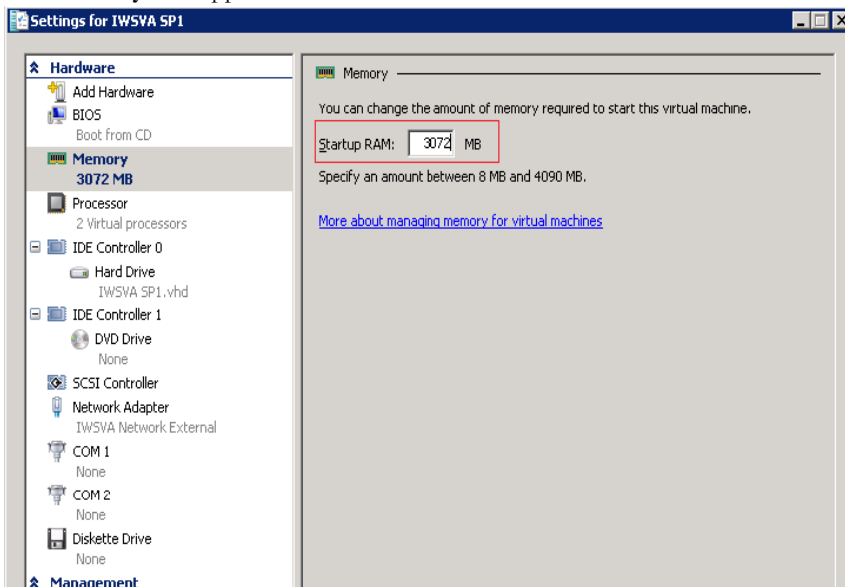


FIGURE F-12. Assigning Memory to the IWSVA Virtual Machine

9. Type the appropriate amount of memory you want to allocate to your IWSVA environment.

10. In the **Hardware** area, select the hard disk controller you want to create the virtual hard disk on.

The **IDE Controller** area appears.

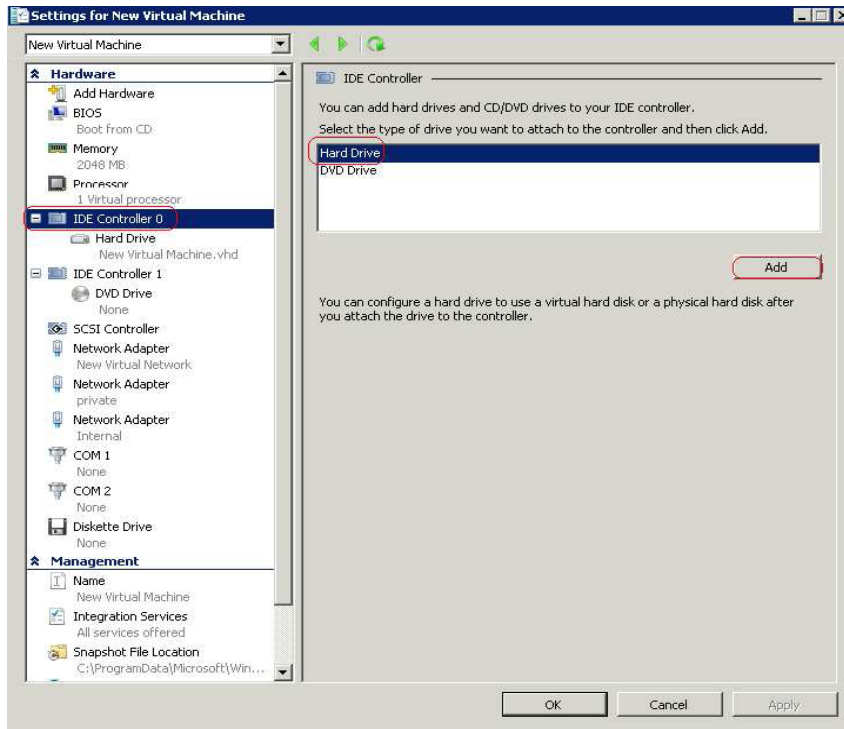


FIGURE F-13. Adding a Hard Drive to the IWSVA Virtual Machine

11. Select **Hard Drive** from the list of options.
12. Click **Add**.

The **Hard Drive** area appears.

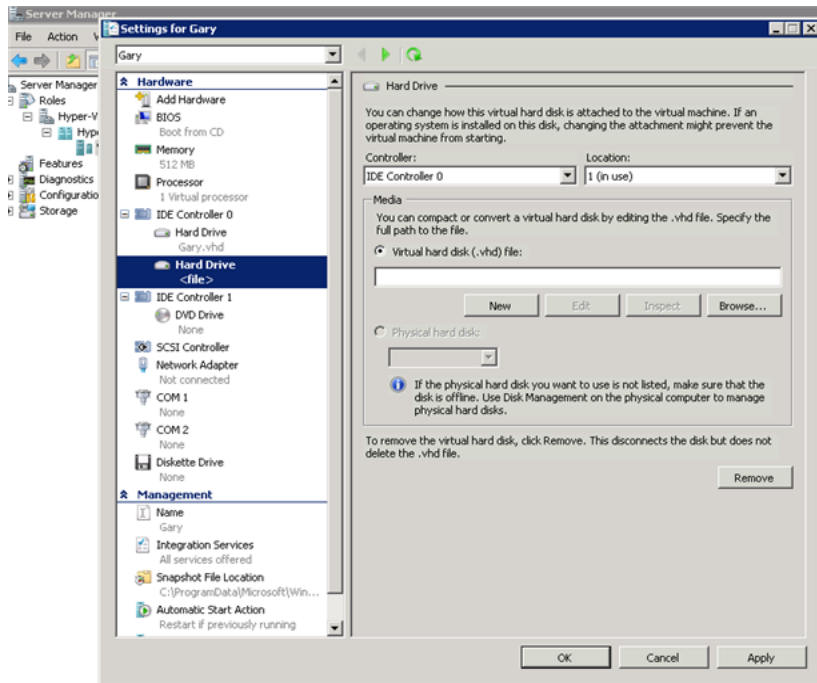


FIGURE F-14. Hard Drive Settings

13. In the **Media** area, leave the **Virtual hard disk (.vhd) file** option selected.
14. Click **New**.

The **New Virtual Hard Disk Wizard** appears.

15. Click **Next**.

The **Choose Disk Type** screen appears.

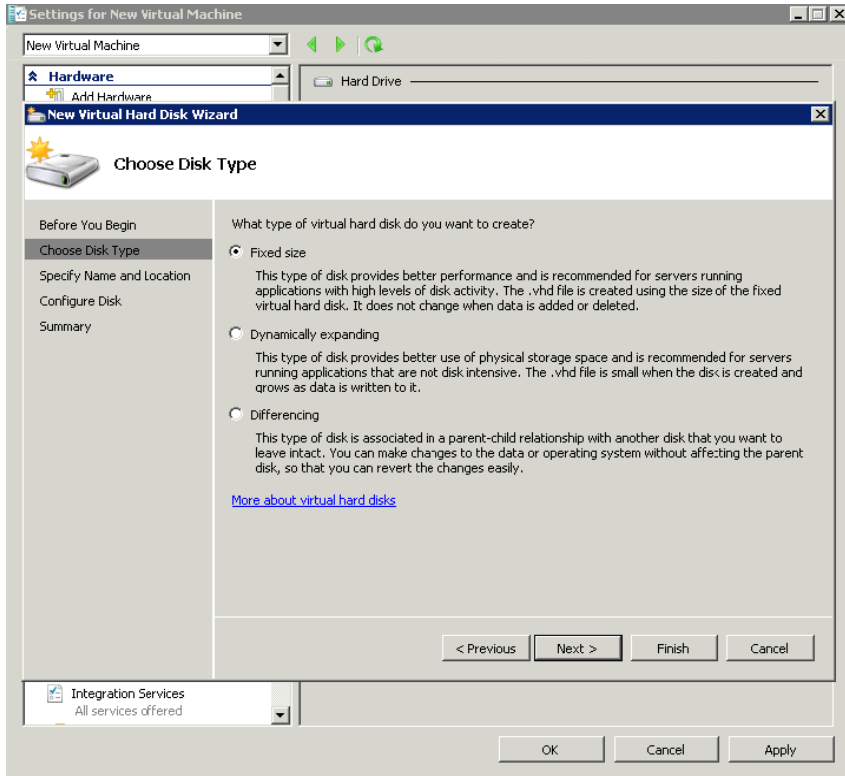


FIGURE F-15. Configure Virtual Hard Drive Wizard

16. Leave the **Fixed size** option selected and click **Next**.

The **Specify Name and Location** screen appears.

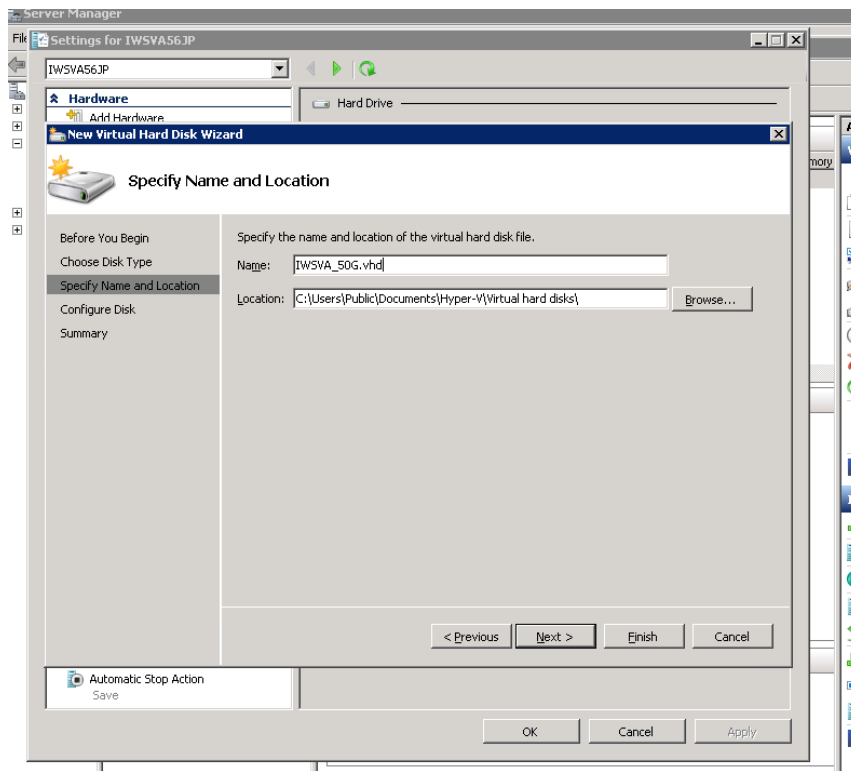


FIGURE F-16. Specify Hard Drive Name and Location

Note: For this example, we name the virtual hard drive “IWSVA_30Gig” and set the size to 30GB. We select **Fixed Size** for maximum performance. This is Trend Micro’s recommended disk volume type for the IWSVA application.

17. Name the hard disk appropriately for your application.
18. Select the location where the virtual hard disk file will be stored.

19. Click **Next**.

The **Configure Disk** screen appears.

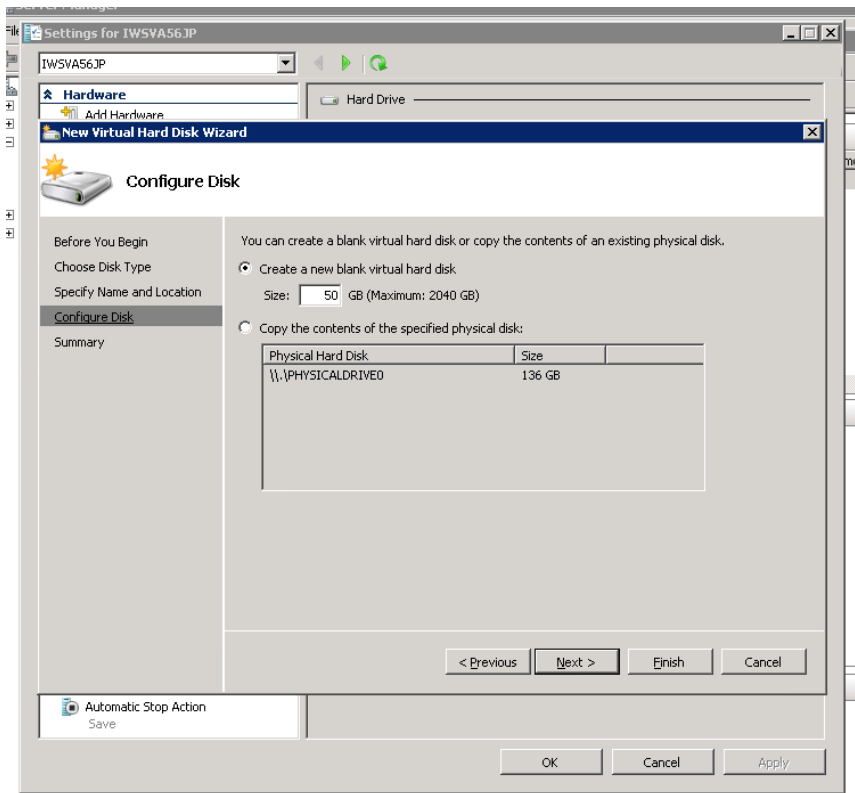


FIGURE F-17. Specify Hard Drive Size

20. Keep the default **Create a new blank virtual hard disk** option selected.
21. In **Size**, type the disk size you want to allocate to the virtual hard drive.
22. Click **Next**.

A summary screen appears that lists the configuration of the virtual hard drive.

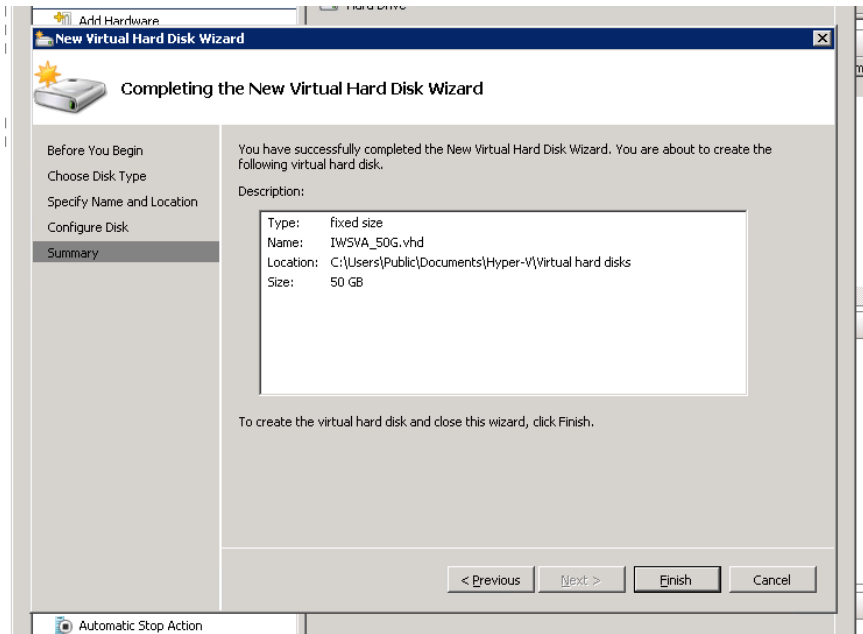


FIGURE F-18. Virtual Hard Drive Configuration Summary

23. Click **Finish** to complete the configuration of the virtual hard disk.

A progress bar appears indicating the status of the hard disk creation process. When this process is finished, the **Hard Drive** area appears.

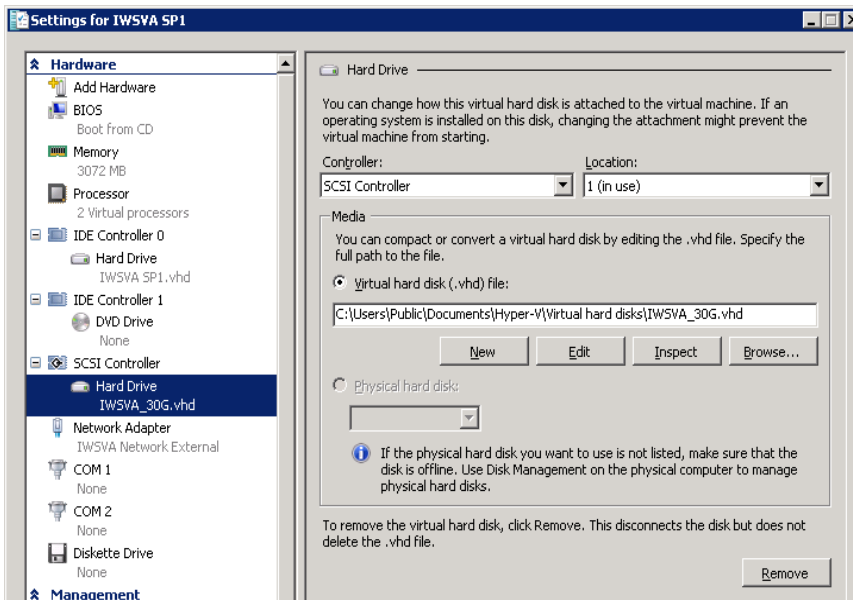


FIGURE F-19. Adding the Virtual Hard Disk to the SCSI Controller

24. In the **Hardware** area, select the newly created hard drive that was created in the previous steps.
25. In the **Hard Drive** area, select **SCSI Controller** in the **Controller** menu.
26. Click **Apply**.
27. Click **OK** to complete assignment of resources to the IWSVA virtual machine.

Powering On the IWSVA Virtual Machine and Completing the Installation

To complete the installation of the IWSVA virtual machine, you must power on the virtual machine, connect to the virtual machine's console, and configure various parameters as described in the following procedures.

To power on the IWSVA virtual machine:

1. From the **Server Manager**, click the name of the virtual machine you created.
2. From the menu bar, select **Action**.
3. From the menu, select **Start**. This will power on the virtual machine. You can now connect to the IWSVA virtual machine's console.

To connect to the IWSVA virtual machine's console:

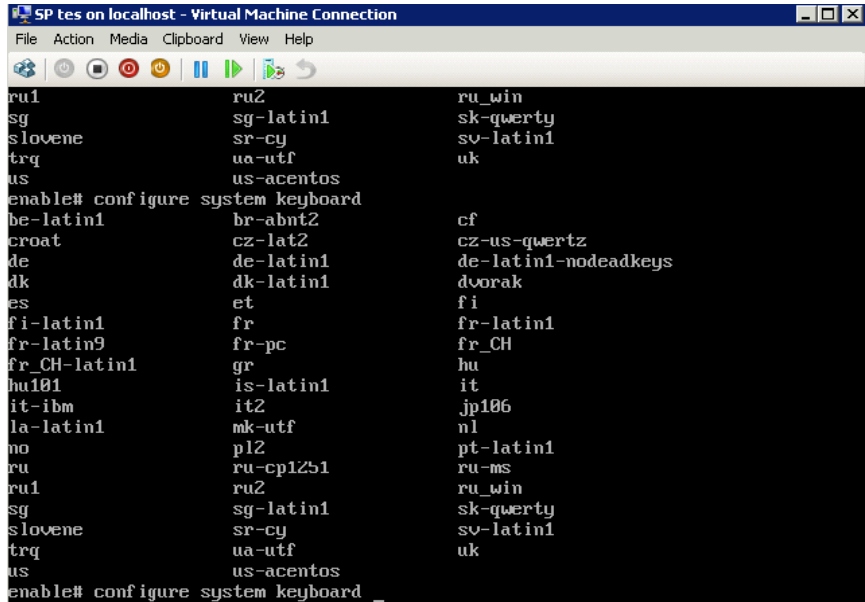
1. From the **Server Manager**, right click the name of the virtual machine you want to configure.
2. From the menu, select the **Connect...** option.

The IWSVA virtual machine logon prompt appears.

3. Type **enable** as the user name.
4. Type the password.

Note: By default the password for the admin, root, and enable accounts is adminIWSS85.

Where <keyboard type> is the code for the specific keyboard type you want to configure.



```

SP tes on localhost - Virtual Machine Connection
File Action Media Clipboard View Help
ru1          ru2          ru_win
sg          sg-latin1   sk-qwerty
slovene    sr-cy      sv-latin1
trq        ua-utf     uk
us         us-acentos
enable# configure system keyboard
be-latin1  br-abnt2   cf
croat      cz-lat2    cz-us-qwertz
de         de-latin1  de-latin1-nodeadkeys
dk         dk-latin1  dvorak
es         et         fi
fi-latin1  fr         fr-latin1
fr-latin9  fr-pc     fr_CH
fr_CH-latin1  gr      hu
hu101     is-latin1 it
it-ibm    it2       jp106
la-latin1 mk-utf    nl
no        pl2       pt-latin1
ru        ru-cp1251 ru-ms
ru1       ru2       ru_win
sg        sg-latin1 sk-qwerty
slovene  sr-cy     sv-latin1
trq      ua-utf     uk
us       us-acentos
enable# configure system keyboard

```

FIGURE F-21. Configure the System Keyboard Type

To complete the hard disk configuration:

1. At the **enable** system prompt, type:

```
configure system haddisk
```

This action will add the new virtual hard drive in the IWSVA /var folder.

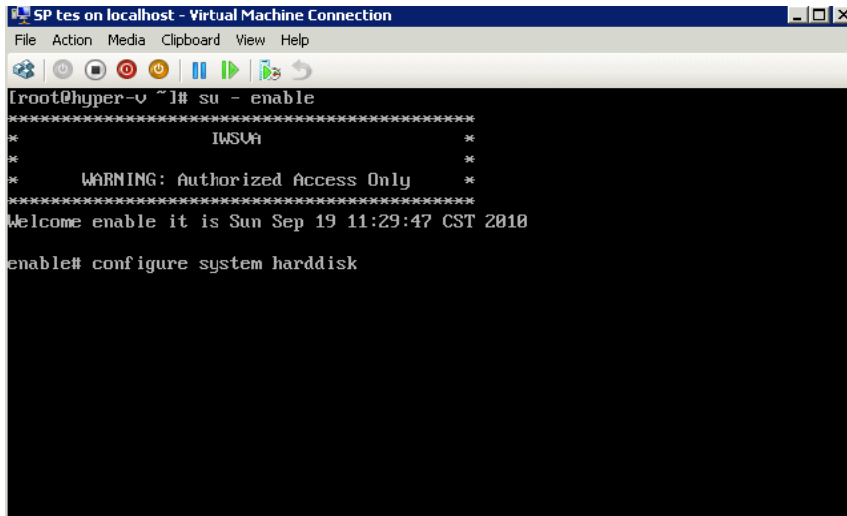


FIGURE F-22. Configuring the Virtual Hard Disk for IWSVA Use

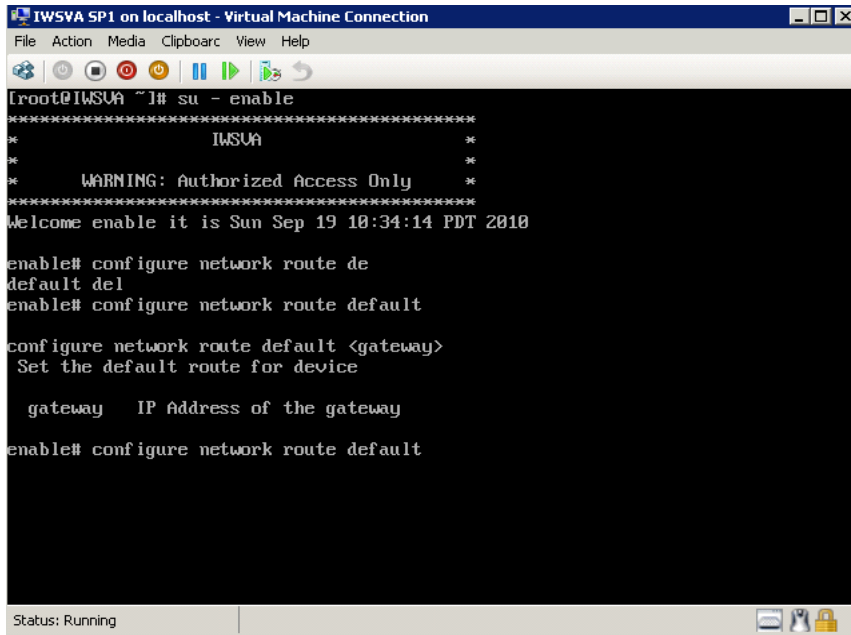
Note: IWSVA supports the addition of one virtual hard drive with each virtual machine.

To configure the network settings:

1. At the **enable** system prompt, type the following commands to configure the network settings for the IWSVA virtual machine:
 - a. To configure the IP address of the network interface card, type:

```
configure network interface static <eth0> 10.10.10.1  
255.255.25
```


- b. To configure the Gateway address, at the system prompt, type:
configure network route default 10.10.10.254



```
IWSVA SP1 on localhost - Virtual Machine Connection
File Action Media Clipboard View Help
[root@IWSVA ~]# su - enable
*****
*                IWSVA                *
*                *                       *
*   WARNING: Authorized Access Only   *
*                *                       *
*****
Welcome enable it is Sun Sep 19 10:34:14 PDT 2010

enable# configure network route de
default del
enable# configure network route default

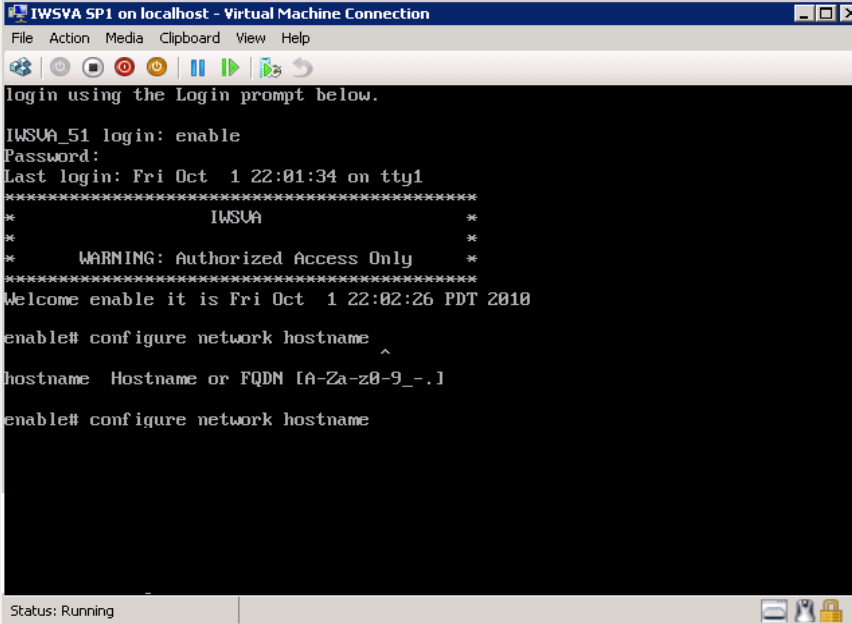
configure network route default <gateway>
Set the default route for device

gateway IP Address of the gateway

enable# configure network route default
```

FIGURE F-24. Configuring the Default Gateway

- d. To create a network host name, at the system prompt, type:
- ```
configure network hostname my_iwsva.company.com
```



```
IWSVA SP1 on localhost - Virtual Machine Connection
File Action Media Clipboard View Help
login using the Login prompt below.
IWSVA_51 login: enable
Password:
Last login: Fri Oct 1 22:01:34 on tty1

* *
* *
* *
* WARNING: Authorized Access Only *
* *
* *

Welcome enable it is Fri Oct 1 22:02:26 PDT 2010

enable# configure network hostname ^
hostname Hostname or FQDN [A-Za-z0-9_-.]
enable# configure network hostname
```

**FIGURE F-26. Configuring the Hostname**

## Accessing the IWSVA Web console

After the network parameters are configured, you can now access IWSVA's Web console to change the deployment mode, review the default policies, and make any other configuration settings.

For more information on configuring IWSVA, refer to the IWSVA Administrator's Guide.

**To access IWSVA's Web management interface, point your browser to:**

```
http://iwsva_ip_address:1812
```

Refer to *Post-Installation Notes on page 3-11* for further instructions.

# Index

## A

- Activation Code 1-8
- adding policy
  - request mode A-13
  - response mode A-13
- Applet and ActiveX scanning component 1-3
- Application Service Pack C-8
- authentication
  - automatic B-5
  - error message B-6
- availability A-3
- availability requirements A-3

## B

- best practices
  - suggestions C-7
- Blue Coat Port 80 Security Gateway, setting up A-11
- browser requirements 1-4

## C

- CDT-compliant B-7
- Cisco CE ICAP servers, setting up A-15
- Cisco router A-7
- client configuration 2-11
- client IP to user ID cache B-3
- clock settings C-7
- cluster configuration or entry, deleting A-16
- command line
  - access 1-8
- compatibility
  - server platform 1-3
- components
  - installation 1-3
- configure module ldap ipuser\_cache B-4
- configure module ldap ipuser\_cache interval B-4
- connection requirements A-2

- Control Manager
  - component 1-3
- Control Manager, TCM, Trend Micro Control Manager 1-7
- core files B-7
- Critical Patch C-8
- critical patches C-8

## D

- Damage Cleanup Services (DCS) A-7
  - database 1-7
    - cannot connect B-6
    - troubleshooting B-6
  - database requirements 1-4
  - database type and location 1-7
  - Demilitarized Zone 2-2
  - Dependent mode
    - FTP proxy 2-9
  - dependent mode
    - double proxy 2-20
    - HTTP double proxy 2-21
    - HTTP proxy ahead 2-17
    - HTTP proxy behind 2-19
    - HTTP reverse proxy 2-30
  - deployment
    - method and redundancy C-5
  - deployment integration A-1
  - directory (LDAP) server
    - performance B-2
    - requirements 1-5
  - directory servers 1-5
  - distributed environment A-2
  - DMZ 2-2
  - DVD
    - forbootable installation 3-2
- ## E
- EICAR test file D-7
  - enable\_ip\_user\_cache B-3
  - external facing web servers C-7

**F**

- feature problems B-7
- forward proxy mode 1-10
  - deploying 2-10
  - overview 2-10
- FTP
  - flows 2-7
  - scanning component 1-3
  - services 2-4
  - upstream proxy 2-8
- FTP over HTTP 2-12

**G**

- Global Catalog A-5
- glossary D-8

**H**

- hardware requirements 1-2
- high volume C-7
- HTTP
  - scanning component 1-3
  - services 2-4
- HTTP flow
  - planning 2-5
- HTTPS decryption 2-7
- Hyper-V
  - installing F-3
  - introduction F-2

**I**

- ICAP 2-23
  - compliant cache server, setting up A-9
  - for Blue Coat appliances A-11
  - for Cisco CE servers A-14
  - for NetCache appliances A-9
  - license key A-9
  - requirements 1-5
- ICAP installation notes A-9
- ICAP mode 1-10
  - deploying 2-23

- HTTP proxy 2-25
  - multiple servers 2-27
- install
  - best practices C-4
- Installation
  - Blue Coat Port 80 Security Appliance, A-15
  - Microsoft Hyper-V 3-5
- installation 1-1, 1-3, 3-1, 4-1
  - Bare Metal 3-5
  - Blue Coat Port 80 Security Appliance, A-11
  - existing FTP proxy 2-8
  - fresh 1-6
  - IWSVA 3-4
  - necessary information 1-6
  - NetCache Appliance A-9
  - overview C-2
  - problems B-6
  - VMware ESX virtual machine 3-5
- integration A-4
  - Cisco router A-7
- Internet Content Adaptation Protocol 2-23
- ip\_user\_central\_cache\_interval B-3
- IWSVA
  - components 1-3
- IWSVA ICAP
  - multiple server services A-10
- IWSVA server
  - placement with one firewall, no DMZ 2-3
  - placement with two firewalls in DMZ 2-2

**J**

- Java Runtime A-12

**K**

- Knowledge Base 1-xii, D-5
  - URL 1-xii, D-5
- known issues D-6
  - Knowledge Base D-6
  - readme D-6

**L**

- Layer 4 switch 2-13
- Layer 4 switches 2-12
- LDAP A-4
  - authentication in transparent mode A-6, B-4
  - integration A-4
  - performance tuning B-2
  - requirements 1-5
  - verbose logging B-4
- License Agreement D-2
- log into console
  - first time 3-11
- logs
  - locations B-8

**M**

- main program 1-3
- maintenance D-2
- Maintenance Agreement D-2
  - defined D-2
  - expiration D-2
  - renewal D-3
  - renewing D-3
- Microsoft SQL Server Desktop Engine (MSDE) 1-7
- migration 1-6
  - about 4-2
  - important notes 4-2
  - information not migrated 4-3
  - IWSVA 5.1 4-6
  - post migration 4-7
  - process overview 4-4
  - versions to migrate 4-2
- multiple domains A-4
- multiple servers 2-27

**N**

- NetCache Appliance, setting up A-9
- network information B-7
- network traffic

- planning 1-9

**O**

- online help 1-xii
- operating system
  - requirements 1-2
- OS Service Pack C-8

**P**

- packet capture B-8
- patches D-2
- performance tuning B-2
- plug-ins information B-7
- post installation 3-11
- problems
  - features B-7
  - installation B-6
- product maintenance D-2
- product updates D-2
- proxy
  - configuration 1-7
  - updates 1-8

**R**

- readme 1-xii, D-2
- redundancy C-7
- registration
  - URL D-3
- Registration Key 1-8
- Registration Profile D-3
- removing 1-1, 3-1, 4-1
- requirements 1-2
  - availability A-3
  - browser 1-4
  - connections A-2
  - database 1-4
  - ICAP 1-5
  - minimum 1-2
  - properties A-2
  - recommended 1-2

- throughput A-3
- reverse proxy mode 1-10
  - overview 2-29
- risk ratings D-8

## S

- scalability C-7
- Security Information Center D-7
- server clusters
  - deleting A-16
- server placement 2-2
- service packs C-8
- simple transparency mode 1-10
- sizing C-4
- SNMP 1-7
- SNMP notification component 1-3
- SolutionBank-see Knowledge Base 1-xii
- Squid
  - preinstalled 3-4
- standalone mode 2-15
  - FTP proxy 2-7
  - HTTP proxy 2-15
  - multiple servers 2-16
- suspicious files D-6
- system information B-7
- system logs B-7
- system requirements 1-2

## T

- technical support D-4
  - before contacting B-6
  - URL D-4
- throughput A-3
- throughput requirements A-3
- TCCM
  - component 1-3
- transparent bridge mode 1-9
  - overview 2-33
  - planning 2-34

- Trend Micro
  - contact information D-4
- Trend Micro Control Manager
  - component 1-3
- TrendLabs D-5, D-8
- troubleshooting D-8
- troubleshooting tips B-6

## U

- Update Center D-2
- upstream proxy C-7
- URL filtering component 1-3
- URLs
  - Knowledge Base 1-xii, D-5—D-6
  - readme documents D-6
  - registration D-3
  - Security Information Center D-7
  - technical support D-4
- user authentication cache B-3
- user group membership cache B-3

## V

- verbose logging B-4
- virus
  - scanning server clusters, configuring A-16
- virus alert service D-8
- virus doctors-see TrendLabs D-5
- Virus Encyclopedia D-7
- Virus Map D-7
- Virus Primer D-8
- virus scanning server clusters
  - server clusters A-16
- Visual Policy Manager A-12

## W

- WCCP A-7
- WCCP Mode 1-11
- WCCP-enabled Switch or Router 2-14
- Web console password 1-7
- weekly virus report D-7

white papers D-8

**X**

X-Infection-Found A-17

X-Virus-ID A-17







**TREND MICRO INCORPORATED**

10101 North De Anza Blvd. Cupertino, CA., 95014, USA

Tel: +1(408)257-1500/1-800 228-5651 Fax: +1(408)257-2003 info@trendmicro.com

[www.trendmicro.com](http://www.trendmicro.com)

Item Code: IBEM65882/130313

